



GENERATOR MANUFACTURER

XINHUA ZHONG AUTOMATION EQUIPMENT CO., LTD.

JIANGSU

JIANGSU XINHUA ZHONG AUTOMATION EQUIPMENT CO., LTD.

Add: Chengbei Industrial Park, Jiangdu District,
Yangzhou City, Jiangsu Province

Phone: +86 18012309933

Tel: +86 514-86828868 / 85182868

Email: postmaster@xhzgenset.com



wechat



Whatsapp



THE UNCEASINGLY EXPANDED ENTERPRISE LAYOUT AND CONTINUOUSLY GROWING BUSINESS PARTNERS ARE GRADUALLY TURNING THE DEVELOPMENT BLUEPRINT INTO REALITY

XHZ Automation Equipment Co., Ltd. is located in the picturesque Chengbei Industrial Park, Yangzhou City, Jiangdu District. The factory covers an area of 26,000 m² and has a registered capital of 36 million RMB. It is a professional enterprise engaged in the production and sales of imported and domestic generator sets, automatic generator sets, silent generator sets, and mobile power stations.

COMPANY PROFILE



1998

Established

36 million

Registered Capital

26000

Registered Capital

26 +

Industry experience

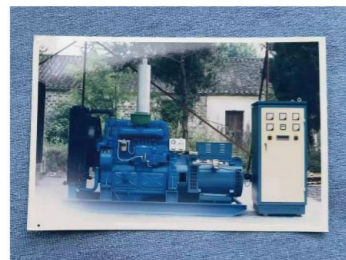
ONE-STOP ENERGY FACTORY

Cummins, Volvo, Doosan, Perkins, Weichai, Yuchai.
Silent, Mobile, Containerized.

COMPANY HISTORY

1998

Jiangdu Huazhong Automation Equipment Co., Ltd. was established in 1998, specializing in the production of generator set control systems and automated generators.



2003

In 2003 Xinhuazhong's first silent generator set and first mobile power station rolled off the production line.



2010

In 2010, the company's R&D department obtained a number of national certified patents for low-noise power stations, control panels, etc.



2013

In 2013, the company received its first order from a data center in Beijing, marking Xinhuazhong's official entry into the data center market.



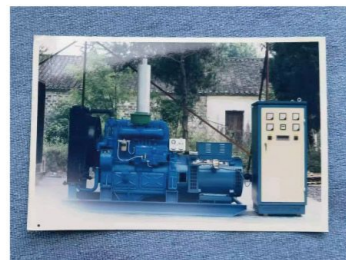
2022

In December 2022, won the honor of high-tech enterprise.



1998

Jiangdu Huazhong Automation Equipment Co., Ltd. was established in 1998, specializing in the production of generator set control systems and automated generators.



2003

In 2003 Xinhuazhong's first silent generator set and first mobile power station rolled off the production line.



2010

In 2010, the company's R&D department obtained a number of national certified patents for low-noise power stations, control panels, etc.



2013

In 2013, the company received its first order from a data center in Beijing, marking Xinhuazhong's official entry into the data center market.



2022

In December 2022, won the honor of high-tech enterprise.



2012 – 2025, the company has consistently maintained ISO 9001, ISO 14001, and ISO 45001 management system certifications, SGS certification, and obtained the right to independently engage in export operations.



2019

In 2019, the company's R&D department actively expanded the silent box design patents and control systems, and obtained 7 national patents.



In 2025, a new 2,000-square-meter industrial plant will be built to expand production space.



2025

In 2008, the company moved to a new plant of 26,000 square meters, and the production capacity was greatly increased to 3,000 units/year.



2008

In 2001, the company was renamed Jiangsu Xinhuazhong Automation Equipment Co., Ltd. and a new production plant of 6,600 square meters was built.



2001

QUALIFICATION CERTIFICATE



BRAND STRENGTH

The best choice of your power system.



CUMMINS



Power range 20kVA-2000kVA

Adopting Cummins engines, offering cutting-edge design, dependable performance and long service life; Alloy steel crankshaft and connecting rod, ensuring high durability.



50Hz

CUMMINS diesel engine 3 phase 50HZ 400/230V

| Genset Model | Standby Power | | Prime Power | | Engine Model | Displacement (L) | Fuel consumption (g/kw.h) | Open type L*W*H (mm) | Silent type L*W*H (mm) |
|--------------|---------------|------|-------------|------|--------------|------------------|---------------------------|----------------------|------------------------|
| | KVA | KW | KVA | KW | | | | | |
| XHZC-25GF | 30 | 24 | 27 | 22 | 4B3.9-G2 | 3.9 | 208 | 1800*850*1300 | 2200*1000*1500 |
| XHZC-40GF | 44 | 35 | 40 | 32 | 4BT3.9-G2 | 3.9 | 208 | 1800*900*1400 | 2200*1000*1500 |
| XHZC-63GF | 69 | 55 | 62.5 | 50 | 4BTA3.9-G2 | 3.9 | 208 | 1800*900*1400 | 2400*1000*1550 |
| XHZC-70GF | 70 | 56 | 65 | 52 | 4BTA3.9-G2 | 3.9 | 208 | 1800*900*1400 | 2400*1000*1550 |
| XHZC-80GF | 90 | 72 | 80 | 64 | 4BTA3.9-G11 | 3.9 | 210 | 1900*800*1400 | 2400*1000*1550 |
| XHZC-100GF | 110 | 88 | 100 | 80 | 4BTA3.9-G13 | 3.9 | 210 | 1900*800*1400 | 2400*1000*1550 |
| XHZC-100GF | 110 | 88 | 100 | 80 | 6BT5.9-G2 | 5.9 | 209 | 2200*900*1450 | 2800*1100*1700 |
| XHZC-113GF | 125 | 100 | 113 | 90 | 6BT5.9-G2 | 5.9 | 210 | 2200*900*1450 | 2800*1100*1700 |
| XHZC-125GF | 138 | 110 | 125 | 100 | 6BTA5.9-G2 | 5.9 | 209 | 2300*900*1450 | 3000*1100*1700 |
| XHZC-138GF | 150 | 120 | 138 | 110 | 6BTAA5.9-G2 | 5.9 | 206 | 2350*1000*1550 | 3000*1100*1700 |
| XHZC-160GF | 175 | 140 | 160 | 128 | 6BTAA5.9-G12 | 5.9 | 205 | 2500*1000*1550 | 3000*1100*1650 |
| XHZC-180GF | 200 | 160 | 180 | 145 | 6CTA8.3-G2 | 8.3 | 209 | 2500*900*1560 | 3300*1300*1800 |
| XHZC-200GF | 215 | 172 | 200 | 160 | 6CTAA8.3-G2 | 8.3 | 207 | 2600*900*1560 | 3300*1300*1800 |
| XHZC-250GF | 264 | 211 | 250 | 200 | 6LTA8.9-G2 | 8.9 | 206 | 2600*1000*1600 | 3600*1600*1900 |
| XHZC-250GF | 275 | 220 | 250 | 200 | 6LTA8.9-G3 | 8.9 | 206 | 2600*1000*1600 | 3600*1600*1900 |
| XHZC-270GF | 300 | 240 | 270 | 220 | 6LTA9.5-G3 | 9.5 | 209 | 2700*1100*1700 | 3800*1700*2000 |
| XHZC-275GF | 313 | 250 | 275 | 220 | NTA855-G1A | 14 | 208 | 2600*1600*1500 | 4000*1700*2000 |
| XHZC-313GF | 340 | 272 | 313 | 250 | 6LTA9.5-G1 | 9.5 | 206 | 2700*1100*1700 | 3800*1700*2000 |
| XHZC-313GF* | 340 | 272 | 313 | 250 | NTA855-G1B | 14 | 208 | 3000*1100*1700 | 4000*1700*2000 |
| XHZC-350GF | 375 | 300 | 350 | 280 | NTA855-G2A | 14 | 207 | 3000*1100*1700 | 4000*1700*2000 |
| XHZC-400GF | 388 | 310 | 350 | 280 | NTA855-G4 | 14 | 209 | 3000*1100*1700 | 4000*1700*2000 |
| XHZC-380GF | 425 | 340 | 388 | 310 | 6ZTAA13-G3 | 14 | 210 | 3000*1300*1700 | 4000*1800*2000 |
| XHZC-375GF | 413 | 330 | 375 | 300 | NTAA855-G7 | 14 | 209 | 3300*1250*1850 | 4000*1700*2000 |
| XHZC-400GF3 | 438 | 350 | 400 | 320 | QSNT-G3 | 13 | 208 | 2900*1250*1900 | 4000*1700*2000 |
| XHZC-438GF | 475 | 380 | 438 | 350 | 6ZTAA13-G4 | 13 | 210 | 3000*1300*1800 | 4000*1800*2000 |
| XHZC-500GF | 513 | 410 | 500 | 400 | QSZ13-G3 | 13 | 209 | 3100*1250*1850 | 4000*1800*2000 |
| XHZC-500GF* | 550 | 440 | 500 | 400 | QSZ13-G10 | 13 | 210 | 3300*1450*1900 | 4300*2000*2200 |
| XHZC-450GF | 500 | 400 | 450 | 360 | KTA19-G3 | 19 | 210 | 3400*1400*1900 | 4300*2000*2200 |
| XHZC-500GF | 563 | 450 | 500 | 400 | KTA19-G3A | 19 | 209 | 3400*1400*2000 | 4300*2000*2200 |
| XHZC-500GF* | 563 | 450 | 500 | 400 | KTA19-G4 | 19 | 210 | 3400*1450*2000 | 4300*2000*2200 |
| XHZC-560GF | 625 | 500 | 563 | 450 | KTAA19-G5 | 19 | 208 | 3600*1460*2100 | 4700*2100*2450 |
| XHZC-700GF | 688 | 550 | / | / | KTAA19-G6A | 19 | 211 | 3700*1500*2200 | 4700*2100*2450 |
| XHZC-725GF | 800 | 640 | 725 | 580 | KT38-GA | 38 | 210 | 4450*1700*2360 | 6058*2438*2896 |
| XHZC-750GF | 825 | 660 | 750 | 600 | KTA38-G2 | 38 | 209 | 4450*1700*2360 | 6058*2438*2896 |
| XHZC-800GF | 888 | 710 | 800 | 640 | KTA38-G2B | 38 | 208 | 4450*1700*2360 | 6058*2438*2896 |
| XHZC-900GF | 1000 | 800 | 910 | 728 | KTA38-G2A | 38 | 208 | 4450*1700*2360 | 6058*2438*2896 |
| XHZC-1000GF | 1100 | 880 | 1000 | 800 | KTA38-G5 | 38 | 210 | 4400*1800*2400 | 6058*2438*2896 |
| *XHZC-1100GF | 1250 | 1000 | / | / | KTA38-G9 | 38 | 209 | 4800*1800*2500 | 6058*2438*2896 |
| XHZC-1250GF | 1375 | 1100 | 1250 | 1000 | KTA50-G3 | 50 | 208 | 5200*2000*2500 | 6058*2438*2896 |
| XHZC-1380GF | 1650 | 1320 | 1375 | 1100 | KTA50-G8 | 50 | 210 | 5900*2270*2500 | 12192*2438*2896 |
| XHZC-1500GF | 1650 | 1320 | 1500 | 1200 | KTA50-GS8 | 50 | 210 | 5900*2270*2500 | 12192*2438*2896 |
| XHZC-1680GF | 1875 | 1500 | 1675 | 1340 | KTA50-G15X | 50 | 209 | 6200*2300*2550 | 12192*2438*2896 |
| XHZC-2000GF | 2090 | 1650 | 2000 | 1600 | KTA50-G16B | 50 | 211 | 6200*2300*2550 | 12192*2438*2896 |



60Hz

CUMMINS diesel engine 3 phase 60HZ 220V~480V

| Genset Model | Standby Power | | Prime Power | | Engine Model | Displacement (L) | Fuel consumption (g/kw.h) | Open type L*W*H (mm) | Silent type L*W*H (mm) |
|--------------|---------------|------|-------------|------|--------------|------------------|---------------------------|----------------------|------------------------|
| | KVA | KW | KVA | KW | | | | | |
| XHZC-25GF | 28 | 22 | 25 | 20 | 4B3.9-G11 | 3.9 | 207 | 1900*800*1400 | 2200*1000*1500 |
| XHZC-30GF | 35 | 28 | 30 | 25 | 4B3.9-G2 | 3.9 | 208 | 1800*850*1300 | 2200*1000*1500 |
| XHZC-35GF | 38 | 30 | 35 | 28 | 4B3.9-G12 | 3.9 | 207 | 1800*900*1300 | 2200*1000*1500 |
| XHZC-45GF | 50 | 40 | 45 | 36 | 4BT3.9-G2 | 3.9 | 206 | 1800*900*1400 | 2200*1000*1500 |
| XHZC-64GF | 70 | 56 | 64 | 51 | 4BTA3.9-G2 | 3.9 | 205 | 1800*900*1400 | 2400*1000*1550 |
| XHZC-75GF | 88 | 70 | 75 | 60 | 4BTA3.9-G2 | 3.9 | 206 | 1800*900*1400 | 2400*1000*1550 |
| XHZC-90GF | 100 | 80 | 90 | 72 | 4BTA3.9-G11 | 3.9 | 205 | 1900*800*1400 | 2400*1000*1550 |
| XHZC-100GF | 115 | 92 | 105 | 84 | 6BT5.9-G2 | 5.9 | 207 | 2200*900*1450 | 2800*1100*1700 |
| XHZC-125GF | 138 | 110 | 125 | 100 | *6BT5.9-G2 | 5.9 | 208 | 2200*900*1450 | 2800*1100*1700 |
| XHZC-130GF | 145 | 116 | 131 | 105 | 6BTA5.9-G2 | 5.9 | 206 | 2300*900*1450 | 3000*1100*1700 |
| XHZC-150GF | 165 | 130 | 150 | 120 | 6BTAA5.9-G2 | 5.9 | 206 | 2350*1000*1550 | 3000*1100*1700 |
| XHZC-160GF | 175 | 140 | 160 | 128 | 6BTAA5.9-G12 | 5.9 | 207 | 2500*1000*1550 | 3000*1100*1700 |
| XHZC-190GF | 209 | 167 | 190 | 152 | 6CTA8.3-G2 | 8.3 | 208 | 2500*900*1560 | 3300*1300*1800 |
| XHZC-210GF | 230 | 184 | 210 | 168 | 6CTAA8.3-G2 | 8.3 | 207 | 2600*900*1560 | 3300*1300*1800 |
| XHZC-250GF | 285 | 228 | 260 | 208 | 6LTA8.9-G2 | 8.9 | 206 | 2600*1000*1600 | 3600*1600*1900 |
| XHZC-288GF | 313 | 250 | 288 | 230 | 6LTA8.9-G3 | 8.9 | 206 | 2600*1000*1600 | 3600*1600*1900 |
| XHZC-285GF | 325 | 260 | 285 | 230 | 6LTA9.5-G3 | 9.5 | 206 | 2700*1100*1700 | 3800*1700*2000 |
| XHZC-325GF | 350 | 280 | 325 | 260 | 6LTA9.5-G1 | 9.5 | 209 | 2700*1100*1700 | 3800*1700*2000 |
| XHZC-388GF | 425 | 340 | 388 | 310 | 6ZTAA13-G3 | 14 | 208 | 2900*1200*1700 | 4000*1800*2000 |
| XHZC-438GF | 475 | 380 | 438 | 350 | 6ZTAA13-G2 | 14 | 209 | 2900*1200*1700 | 4000*1800*2000 |
| XHZC-500GF | 525 | 420 | 500 | 400 | QSZ13-G3 | 13 | 208 | 3100*1250*1850 | 4000*1800*2000 |
| XHZC-560GF | 625 | 500 | 560 | 450 | QSZ13-G11 | 13 | 208 | 3100*1250*1850 | 4300*2000*2200 |
| XHZC-280GF | 275 | 220 | / | / | NT855-GA | 14 | 208 | 2600*1600*1500 | 4000*1700*2000 |
| XHZC-350GF | 350 | 280 | 313 | 250 | NTA855-G1 | 14 | 207 | 3000*1100*1700 | 4000*1700*2000 |
| XHZC-380GF | 375 | 300 | 350 | 280 | NTA855-G1B | 14 | 209 | 3000*1100*1700 | 4000*1700*2000 |
| XHZC-450GF | 438 | 350 | 394 | 315 | NTA855-G3 | 14 | 208 | 3000*1100*1700 | 4000*1700*2000 |
| XHZC-400GF3 | 438 | 350 | 400 | 320 | QSNT-G3 | 13 | 208 | 2900*1250*1900 | 4000*1700*2000 |
| XHZC-500GF | 550 | 450 | 500 | 410 | KTA19-G3 | 19 | 209 | 3400*1400*1900 | 4700*2100*2450 |
| XHZC-560GF | 625 | 500 | 563 | 450 | KTA19-G3A | 19 | 208 | 3400*1400*2000 | 4700*2100*2450 |
| XHZC-560GF* | 625 | 500 | 563 | 450 | KTA19-G4 | 19 | 207 | 3400*1450*2000 | 4700*2100*2450 |
| XHZC-625GF | 688 | 550 | 588 | 470 | KTAA19-G5 | 19 | 209 | 3580*1555*2150 | 4700*2100*2450 |
| XHZC-720GF | 713 | 570 | 625 | 500 | QSK19-G4 | 18.9 | 208 | 3800*1600*2200 | 4700*2100*2450 |
| *XHZC-750GF | 750 | 600 | / | / | KTAA19-G6A | 19 | 210 | 3700*1500*2200 | 4700*2100*2450 |
| XHZC-688GF | 750 | 600 | 688 | 550 | QSK19-G5 | 19 | 207 | 3800*1550*2200 | 4700*2100*2450 |
| XHZC-775GF | 844 | 680 | 775 | 620 | KT38-G | 38 | 208 | 4450*1700*2360 | 6058*2438*2896 |
| XHZC-875GF | 963 | 770 | 875 | 700 | KTA38-G1 | 38 | 206 | 4450*1700*2360 | 6058*2438*2896 |
| XHZC-900GF | 1000 | 800 | 906 | 725 | KTA38-G2 | 38 | 209 | 4450*1700*2360 | 6058*2438*2896 |
| XHZC-940GF | 1038 | 830 | 938 | 750 | KTA38-G2B | 38 | 210 | 4450*1700*2360 | 6058*2438*2896 |
| XHZC-1000GF | 1125 | 900 | 1000 | 800 | KTA38-G2A | 38 | 209 | 4450*1700*2360 | 6058*2438*2896 |
| XHZC-1100GF | 1250 | 1000 | 1125 | 900 | KTA38-G4 | 38 | 208 | 4400*1800*2400 | 6058*2438*2896 |
| XHZC-1100GF | 1375 | 1100 | / | / | KTA38-G9 | 38 | 210 | 4800*1800*2400 | 6058*2438*2896 |
| XHZC-1250GF | 1438 | 1150 | 1200 | 960 | QSK38-G5 | 38 | 208 | 4800*1800*2400 | 6058*2438*2896 |
| XHZC-1375GF | 1563 | 1250 | 1375 | 1100 | KTA50-G3 | 50 | 209 | 5200*2000*2500 | 6058*2438*2896 |
| XHZC-1375GF | 1550 | 1240 | 1375 | 1100 | QSK38-G4 | 38 | 211 | 5300*2000*2500 | 12192*2438*2896 |
| XHZC-1580GF | 1875 | 1500 | 1575 | 1260 | KTA50-G9 | 50 | 212 | 5900*2300*2500 | 12192*2438*2896 |

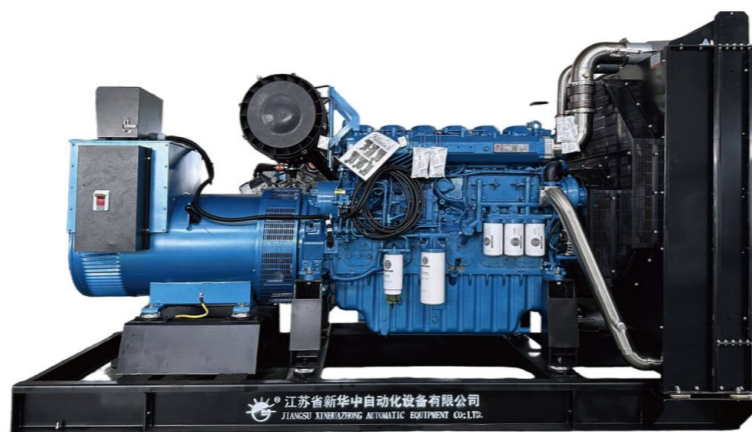
CUMMINS
WEICHAI
YUCHAI
SDEC
DOOSAN
PERKINS
VOLVO
MITSUBISHI

WEICHAI

WEICHAI
维柴

Power range 20kVA-4000kVA

The engine adopts core technology independently developed by Weichai and has an output power range (20kva-4000kva) to meet the power demand in multiple scenarios.



50Hz

WEICHAI diesel engine 3 phase 50HZ 400/230V

| Genset Model | Standby Power | | Prime Power | | Engine Model | Displacement (L) | Fuel consumption (g/kw.h) | Dimension L*W*H (mm) | Weight (kg) |
|--------------|---------------|------|-------------|------|----------------|------------------|---------------------------|----------------------|-------------|
| | KVA | KW | KVA | KW | | | | | |
| XHZW-20GF | 18 | 23 | 16 | 20 | WP2.3D25E200 | 2.3L | ≤225 | 1400*800*1100 | 720 |
| XHZW-30GF | 26 | 33 | 24 | 30 | WP2.3D33E200 | 2.3L | ≤225 | 1400*800*1100 | 720 |
| XHZW-38GF | 33 | 41 | 30 | 38 | WP2.3D40E200 | 2.3L | ≤225 | 1450*800*1200 | 790 |
| XHZW-40GF | 40 | 50 | 36 | 45 | WP2.3D48E200 | 2.3L | ≤220 | 1600*800*1200 | 800 |
| XHZW-60GF | 55 | 69 | 50 | 63 | WP4.1D66E200 | 4.1L | ≤235 | 1700*800*1200 | 920 |
| XHZW-80GF | 70 | 88 | 64 | 80 | WP4.1D80E200 | 4.1L | ≤235 | 2200*900*1300 | 1000 |
| XHZW-100GF | 100 | 125 | 80 | 100 | WP4.1D113E200 | 4.1L | ≤235 | 2200*900*1300 | 1000 |
| XHZW-125GF | 120 | 150 | 100 | 125 | WP6D132E200 | 6L | ≤205 | 2200*900*1300 | 1500 |
| XHZW-150GF | 132 | 165 | 120 | 150 | WP6D152E200 | 6L | ≤205 | 2200*900*1500 | 1500 |
| XHZW-175GF | 150 | 188 | 140 | 175 | WP6D167E200 | 6L | ≤215 | 2400*900*1500 | 1500 |
| XHZW-200GF | 176 | 220 | 160 | 200 | WP10D200E200 | 10L | ≤215 | 2400*900*1500 | 1500 |
| XHZW-230GF | 200 | 250 | 184 | 230 | WP10D238E200 | 10L | ≤215 | 2400*900*1500 | 1500 |
| XHZW-250GF | 220 | 275 | 200 | 250 | WP10D264E200 | 10L | ≤215 | 2550*1000*1500 | 1800 |
| XHZW-313GF | 280 | 350 | 250 | 313 | WP10D320E200 | 10L | ≤205 | 2700*1100*1800 | 2500 |
| XHZW-375GF | 320 | 400 | 300 | 375 | WP13D385E200 | 13L | ≤210 | 3000*1100*1800 | 2700 |
| XHZW-400GF | 352 | 440 | 320 | 400 | WP13D405E200 | 13L | ≤215 | 3100*1100*1800 | 3000 |
| XHZW-450GF | 400 | 500 | 360 | 450 | WP13D440E310 | 13L | ≤215 | 3100*1100*1800 | 3500 |
| XHZW-500GF | 440 | 550 | 400 | 500 | WP13D490E310 | 13L | ≤215 | 3200*1300*1800 | 3800 |
| XHZW-650GF | 580 | 725 | 520 | 650 | 6M33D633E200 | 19 | ≤213 | 3700*1600*2250 | 4600 |
| XHZW-650GF* | 580 | 725 | 520 | 650 | 6M33D633E310 | 19 | ≤217 | 3700*1600*2250 | 3600 |
| XHZW-675GF | 600 | 750 | 540 | 675 | 6M33D670E200 | 19 | ≤215 | 3700*1600*2250 | 5500 |
| XHZW-750GF | 660 | 825 | 600 | 750 | 12M26D748E200 | 31 | ≤214 | 3700*1600*2250 | 6000 |
| XHZW-800GF | 720 | 900 | 640 | 800 | 8M33D800E200 | 26 | ≤210 | 3800*1800*2250 | 6100 |
| XHZW-900GF | 800 | 1000 | 720 | 900 | 8M33D890E200 | 26 | ≤210 | 3800*1800*2250 | 6100 |
| XHZW-800GF | 700 | 875 | 640 | 800 | 12M26D792E200 | 31 | ≤216 | 4600*1800*2300 | 6200 |
| XHZW-900GF | 800 | 1000 | 720 | 900 | 12M26D902E200 | 31 | ≤215 | 4600*1900*2300 | 7500 |
| XHZW-1000GF | 880 | 1100 | 800 | 1000 | 12M26D968E200 | 31 | ≤215 | 5300*2200*2500 | 7550 |
| XHZW-1000GF | 880 | 1100 | 800 | 1000 | 12M33D968E310 | 39 | ≤216 | 5300*2200*2500 | 7550 |
| XHZW-1125GF | 1000 | 1250 | 900 | 1125 | 12M33D1108E200 | 39 | ≤214 | 5400*2250*2600 | 9800 |
| XHZW-1250GF | 1100 | 1375 | 1000 | 1250 | 12M33D1210E200 | 39 | ≤213 | 5400*2250*2600 | 9800 |
| XHZW-1375GF | 1200 | 1500 | 1100 | 1375 | 12M33D1320E200 | 39 | ≤210 | 5400*2250*2600 | 9800 |
| XHZW-1000GF | 880 | 1100 | 800 | 1000 | 12M33D968E310 | 39 | ≤216 | 5300*2200*2500 | 7550 |
| XHZW-1125GF | 1000 | 1250 | 900 | 1125 | 12M33D1108E310 | 39 | ≤215 | 5400*2250*2500 | 9800 |
| XHZW-1250GF | 1100 | 1375 | 1000 | 1250 | 12M33D1240E310 | 39 | ≤215 | 5400*2250*2500 | 9800 |
| XHZW-1375GF | 1200 | 1500 | 1100 | 1375 | 12M33D1320E310 | 39 | ≤217 | 5400*2250*2500 | 9800 |
| XHZW-1560GF | 1400 | 1750 | 1250 | 1563 | 16M33D1530E310 | 52 | ≤215 | 6200*2150*2500 | 13000 |
| XHZW-1690GF | 1485 | 1856 | 1350 | 1688 | 16M33D1580E310 | 52 | ≤216 | 6300*2150*2500 | 13000 |
| XHZW-1750GF | 1520 | 1900 | 1400 | 1750 | 16M33D1680E310 | 52 | ≤210 | 6300*2150*2500 | 13500 |
| XHZW-1875GF | 1650 | 2063 | 1500 | 1875 | 16M33D1800E310 | 52 | ≤216 | 6400*2210*2500 | 13200 |
| XHZW-1875GF | 1650 | 2063 | 1500 | 1875 | 12M55D1870E310 | 39 | ≤215 | 6520*2210*2500 | 13200 |
| XHZW-2000GF | 1760 | 2200 | 1600 | 2000 | 12M55D2020E310 | 39 | ≤215 | 6520*2210*2500 | 13800 |
| XHZW-2250GF | 1980 | 2475 | 1800 | 2250 | 12M55D2200E310 | 39 | ≤210 | 6620*2210*2500 | 14000 |
| XHZW-2500GF | 2200 | 2750 | 2000 | 2500 | 12M55D2450E310 | 39 | ≤216 | 7000*2400*2600 | 22000 |



60Hz

WEICHAI diesel engine 3 phase 60HZ 220V~480V

| Genset Model | Standby Power | | Prime Power | | Engine Model | Displacement (L) | Fuel consumption (g/kw.h) | Open type L*W*H (mm) | Weight (kg) |
|--------------|---------------|------|-------------|------|----------------|------------------|---------------------------|----------------------|-------------|
| | KVA | KW | KVA | KW | | | | | |
| XHZW-25GF | 24 | 30 | 20 | 25 | WP2.3D30E201 | 2.3 | ≤210 | 1500*750*1050 | 350 |
| XHZW-38GF | 33 | 41 | 30 | 38 | WP2.3D41E201 | 2.3 | ≤216 | 1500*750*1050 | 400 |
| XHZW-44GF | 40 | 50 | 35 | 44 | WP2.3D47E201 | 2.3 | ≤215 | 1500*750*1050 | 500 |
| XHZW-50GF | 50 | 63 | 40 | 50 | WP2.3D58E201 | 2.3 | ≤215 | 1850*800*1100 | 700 |
| XHZW-75GF | 66 | 83 | 60 | 75 | WP4.1D80E201 | 4.1 | ≤210 | 1900*870*1180 | 1000 |
| XHZW-94GF | 83 | 104 | 75 | 94 | WP4.1D95E201 | 4.1 | ≤216 | 1900*870*1180 | 1100 |
| XHZW-110GF | 100 | 125 | 90 | 113 | WP4.1D115E201 | 4.1 | ≤215 | 2250*880*1250 | 1200 |
| XHZW-125GF | 110 | 138 | 100 | 125 | WP6D132E201 | 6 | ≤215 | 2400*950*1510 | 1250 |
| XHZW-150GF | 132 | 165 | 120 | 150 | WP6D158E201 | 6 | ≤210 | 2400*950*1510 | 1200 |
| XHZW-188GF | 160 | 188 | 150 | 188 | WP6D180E201 | 6 | ≤210 | 2400*950*1510 | 1500 |
| XHZW-188GF | 165 | 206 | 150 | 188 | WP10D200E201 | 10 | ≤216 | 2850*1040*1580 | 1550 |
| XHZW-225GF | 200 | 250 | 180 | 225 | WP10D238E201 | 10 | ≤215 | 2850*1040*1580 | 1500 |
| XHZW-250GF | 220 | 280 | 200 | 250 | WP10D264E201 | 10 | ≤215 | 3050*1100*1800 | 1800 |
| XHZW-375GF | 320 | 400 | 300 | 375 | WP10D360E201 | 10 | ≤210 | 2850*1040*1580 | 2500 |
| XHZW-375GF | 330 | 413 | 300 | 375 | WP13D385E201 | 13 | ≤210 | 3350*1150*1800 | 2700 |
| XHZW-500GF | 460 | 575 | 400 | 500 | WP13D510E311 | 13 | ≤216 | 3350*1150*1800 | 3000 |
| XHZW-563GF | 500 | 625 | 450 | 563 | 6M33D572E201 | 19 | ≤210 | 3800*1600*2200 | 3800 |
| XHZW-650GF | 580 | 725 | 520 | 650 | 6M33D633E201 | 19 | ≤216 | 3800*1600*2200 | 4100 |
| XHZW-688GF | 600 | 750 | 550 | 688 | 6M33D670E201 | 19 | ≤215 | 4100*2000*2250 | 4300 |
| XHZW-725GF | 640 | 800 | 580 | 725 | 6M33D710E201 | 19 | ≤210 | 3800*1600*2200 | 4500 |
| XHZW-750GF | 660 | 825 | 600 | 750 | 6M33D740E311 | 19 | ≤216 | 3800*1600*2200 | 4700 |
| XHZW-800GF | 700 | 875 | 640 | 800 | 8M33D800E311 | 26 | ≤210 | 3900*1800*2200 | 5200 |
| XHZW-800GF | 800 | 1000 | 720 | 800 | 8M33D895E311 | 26 | ≤215 | 3900*1800*2200 | 5800 |
| XHZW-1000GF | 900 | 1125 | 800 | 1000 | 8M33D1012E311 | 26 | ≤216 | 4000*1900*2200 | 6300 |
| XHZW-800GF* | 700 | 875 | 640 | 800 | 12M26D792E201 | 31 | ≤215 | 4100*2000*2250 | 6400 |
| XHZW-900GF* | 800 | 1000 | 720 | 900 | 12M26D902E201 | 31 | ≤210 | 4100*2000*2250 | 6700 |
| XHZW-1000GF | 900 | 1100 | 800 | 1000 | 12M26D1012E201 | 31 | ≤216 | 4400*2000*2250 | 7500 |
| XHZW-1000GF* | 900 | 1100 | 800 | 1000 | 12M33D1012E201 | 39 | ≤215 | 4700*2200*2400 | 7600 |
| XHZW-1125GF* | 1000 | 1250 | 900 | 1125 | 12M33D1108E201 | 39 | ≤215 | 4700*2200*2400 | 8400 |
| XHZW-1250GF* | 1100 | 1375 | 1000 | 1250 | 12M33D1265E201 | 39 | ≤210 | 4700*2200*2400 | 9100 |
| XHZW-1500GF | 1320 | 1650 | 1200 | 1500 | 12M33D1320E201 | 39 | ≤215 | 4700*2200*2400 | 9500 |
| XHZW-1625GF | 1430 | 1800 | 1300 | 1625 | 12M33D1420E201 | 39 | ≤215 | 4700*2200*2400 | 11000 |
| XHZW-1625GF | 1430 | 1800 | 1300 | 1625 | 12M33D1420E201 | 39 | ≤210 | 4700*2200*2400 | 11500 |
| XHZW-1750GF | 1540 | 1925 | 1400 | 1750 | 16M33D1680E311 | 52 | ≤215 | 5400*2250*2500 | 12000 |
| XHZW-1875GF | 1650 | 2065 | 1500 | 1875 | 16M33D1785E311 | 52 | ≤210 | 5400*2250*2500 | 14000 |
| XHZW-2188GF | 1925 | 2400 | 1750 | 2188 | 16M33D1920E311 | 52 | ≤216 | 5400*2250*2500 | 15000 |
| XHZW-2250GF | 1980 | 2475 | 1800 | 2250 | 20M33D2230E311 | 65 | ≤215 | 5400*2250*2500 | 16000 |
| XHZW-2500GF | 2200 | 2750 | 2000 | 2500 | 20M33D2460E311 | 65 | ≤210 | 7000*2400*2600 | 16500 |
| XHZW-2812GF | 2500 | 3125 | 2250 | 2812 | 12M55D2700E311 | 65 | ≤218 | 7300*2400*2800 | 17000 |
| XHZW-3000GF | 2640 | 3300 | 2400 | 3000 | 16M55D2960E311 | 87 | ≤218 | 7500*2700*3000 | 19000 |
| XHZW-3250GF | 2800 | 3500 | 2600 | 3250 | 16M55D3150E311 | 87 | ≤218 | 7800*2700*3100 | 21000 |
| XHZW-3375GF | 3000 | 3750 | 2700 | 3375 | 16M55D3350E311 | 87 | ≤218 | 8000*2800*3200 | 22000 |
| XHZW-3750GF | 3300 | 4125 | 3000 | 3750 | 16M55D3600E311 | 87 | ≤218 | 8000*2800*3300 | 23000 |

GUMMINS

WEICHAI

YUCHAI

SDEC

DOOSAN

PERKINS

VOLVO

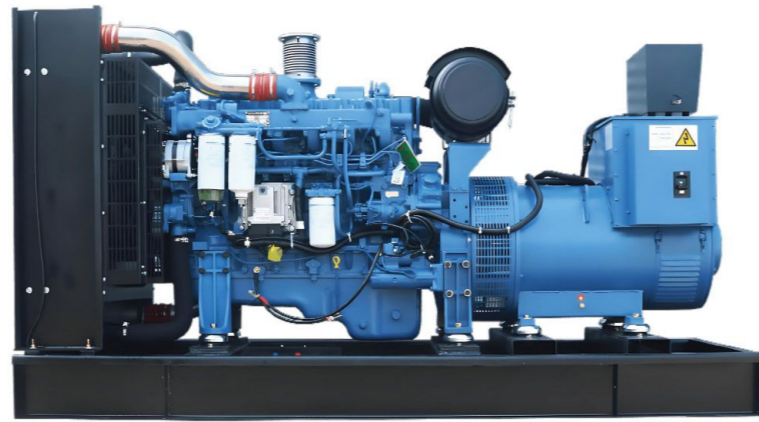
MTSUSHISHI

YUCHAI



Power range 30kVA-4000kVA

Adopting Yuchai engines, featuring strong transient loading capacity, good maintainability and long service life.



50Hz

YUCHAI diesel engine 3 phase 50HZ 400/230V

| Genset Model | Standby Power | | Prime Power | | Engine Model | Cyl | DSPL (L) | Cons. (g/kw.h) | Dimension L*W*H (mm) | Weight (kg) |
|---------------|---------------|------|-------------|------|-----------------|-----|----------|----------------|----------------------|-------------|
| | KVA | KW | KVA | KW | | | | | | |
| XHZY-20GF | 18 | 23 | 16 | 20 | YC4V35-D20 | 4L | 2.982 | ≤232 | 1700*650*1000 | 770 |
| XHZY-30GF | 27 | 34 | 24 | 30 | YC4V45Z-D20 | 4L | 2.982 | ≤232 | 1700*650*1000 | 770 |
| XHZY-68GF | 33 | 41 | 30 | 38 | YC4V55Z-D20 | 4L | 2.982 | ≤232 | 1700*700*1000 | 770 |
| XHZY-40GF | 35 | 44 | 32 | 40 | YC4D60-D25 | 4L | 4.21 | ≤232 | 1800*700*1000 | 830 |
| XHZY-63GF | 55 | 69 | 50 | 63 | YC4D90Z-D25 | 4L | 4.21 | ≤200 | 1900*750*1100 | 850 |
| XHZY-70GF | 60 | 75 | 55 | 69 | YC4A100Z-D20 | 6L | 4.84 | ≤200 | 1900*750*1100 | 900 |
| XHZY-100GF | 90 | 113 | 80 | 100 | YC4A140L-D25 | 6L | 6.871 | ≤200 | 2100*1100*1300 | 1100 |
| XHZY-125GF | 110 | 138 | 100 | 125 | YC4A180L-D20 | 6L | 6.871 | ≤200 | 2200*1100*1400 | 1150 |
| XHZY-125GF* | 120 | 150 | 100 | 125 | YC6B180L-D20 | 6L | 6.871 | ≤200 | 2200*1100*1400 | 1200 |
| XHZY-150GF | 132 | 165 | 120 | 150 | YC6B205L-D20 | 6L | 6.871 | ≤230 | 2300*1100*1500 | 1250 |
| XHZY-175GF | 154 | 193 | 140 | 175 | YC6A230L-D20 | 6L | 7.25 | ≤192 | 2400*1100*1500 | 1410 |
| XHZY-188GF | 165 | 206 | 150 | 188 | YC6A245L-D21 | 6L | 7.25 | ≤192 | 2500*1100*1600 | 1430 |
| XHZY-250GF | 220 | 275 | 200 | 250 | YC6MK350L-D20 | 6L | 10.34 | ≤195 | 2900*1100*1600 | 1600 |
| XHZY-313GF | 275 | 344 | 250 | 313 | YC6MK420L-D20 | 6L | 10.34 | ≤195 | 3100*1100*1850 | 1600 |
| XHZY-350GF | 310 | 388 | 280 | 350 | YC6MK460L-D20 | 6L | 11.75 | ≤195 | 3100*1100*1850 | 1900 |
| XHZY-375GF | 320 | 400 | 300 | 375 | YC6MK480L-D20 | 6L | 11.75 | ≤195 | 3200*1200*1850 | 1900 |
| XHZY-375GF* | 330 | 413 | 300 | 375 | YC6MJ500-D21 | 6L | 12.16 | ≤195 | 3250*1200*1600 | 1900 |
| XHZY-400GF | 352 | 440 | 320 | 400 | YC6MJ540-D30 | 6L | 12.16 | ≤195 | 3250*1200*1700 | 2300 |
| XHZY-450GF | 396 | 495 | 360 | 450 | YC6MJ600-D30 | 6L | 16.3 | ≤195 | 3450*1400*1800 | 3000 |
| XHZY-500GF | 440 | 550 | 400 | 500 | YC6T660L-D20 | 6L | 16.3 | ≤195 | 3500*1400*1900 | 3600 |
| XHZY-563GF | 500 | 625 | 450 | 563 | YC6TD780-D31 | 6L | 19.58 | ≤195 | 3500*1400*1900 | 3800 |
| XHZY-563GF* | 500 | 625 | 450 | 563 | YC6TD780-D30 | 6L | 19.58 | ≤195 | 3500*1400*1900 | 3800 |
| XHZY-625GF | 550 | 688 | 500 | 625 | YC6TD840-D31 | 6L | 19.58 | ≤195 | 3600*1400*1900 | 4400 |
| XHZY-625GF* | 550 | 688 | 500 | 625 | YC6TD840-D30 | 6L | 19.58 | ≤195 | 3600*1400*1900 | 4400 |
| XHZY-688GF | 600 | 750 | 550 | 688 | YC6TD900-D31 | 6L | 19.58 | ≤195 | 3600*1400*2200 | 4400 |
| XHZY-688GF* | 605 | 750 | 550 | 688 | YC6TD900-D30 | 6L | 19.58 | ≤195 | 3600*1400*2200 | 4400 |
| XHZY-750GF | 660 | 825 | 600 | 750 | YC6TD1000-D31 | 6L | 39.58 | ≤195 | 4100*1900*2200 | 6500 |
| XHZY-750GF* | 660 | 825 | 600 | 750 | YC6TD1000-D30 | 6L | 39.58 | ≤195 | 4100*1900*2200 | 6500 |
| XHZY-800GF* | 704 | 880 | 640 | 800 | YC6TD1100-D30 | 6L | 39.58 | ≤195 | 4200*2000*2200 | 6800 |
| XHZY-910GF | 800 | 1000 | 730 | 913 | YC6TH1220-D31 | 6L | 39.58 | ≤195 | 4200*2000*2200 | 6800 |
| XHZY-1000GF | 900 | 1125 | 800 | 1000 | YC6TH1320-D31 | 6L | 39.58 | ≤195 | 4200*2000*2200 | 7350 |
| XHZY-1125GF | 1000 | 1250 | 900 | 1125 | YC6C1520-D31 | 6L | 39.58 | ≤195 | 4300*2000*2200 | 8700 |
| XHZY-1250GF | 1100 | 1375 | 1000 | 1250 | YC6C1660-D31 | 6L | 39.58 | ≤195 | 4400*2000*2200 | 9000 |
| XHZY-1250GF* | 1100 | 1375 | 1000 | 1250 | YC6C1660-D30 | 6L | 39.58 | ≤195 | 4400*2000*2200 | 9000 |
| XHZY-1000GF* | 900 | 1125 | 800 | 1000 | YC12VTD1350-D30 | 12V | 79.17 | ≤195 | 4400*2000*2200 | 7300 |
| XHZY-1125GF* | 1000 | 1250 | 900 | 1125 | YC12VTD1500-D30 | 12V | 79.17 | ≤195 | 4500*2000*2250 | 8100 |
| XHZY-1250GF** | 1100 | 1375 | 1000 | 1250 | YC12VTD1680-D30 | 12V | 79.17 | ≤195 | 4600*2200*2450 | 9300 |
| XHZY-1375GF | 1200 | 1500 | 1100 | 1375 | YC12VTD1830-D30 | 12V | 79.17 | ≤195 | 4600*2200*2450 | 9500 |
| XHZY-1500GF | 1320 | 1650 | 1200 | 1500 | YC12VTD2000-D30 | 12V | 79.17 | ≤195 | 4600*2300*2450 | 10000 |
| XHZY-1688GF | 1485 | 1856 | 1350 | 1688 | YC16VTD2270-D30 | 16V | 105.56 | ≤195 | 4700*2300*2450 | 11000 |
| XHZY-1875GF | 1650 | 2063 | 1500 | 1875 | YC16VTD2510-D30 | 16V | 105.56 | ≤195 | 4800*2400*2500 | 12000 |
| XHZY-2000GF | 1760 | 2200 | 1600 | 2000 | YC16VTD2700-D30 | 16V | 105.56 | ≤195 | 5300*2400*2600 | 14000 |
| XHZY-2250GF | 1980 | 2475 | 1800 | 2250 | YC16VC3000-D31 | 16V | 105.56 | ≤203 | 5500*2500*2600 | 16000 |
| XHZY-2500GF | 2200 | 2750 | 2000 | 2500 | YC16VC3300-D31 | 16V | 105.56 | ≤203 | 5800*2600*2700 | 18000 |
| XHZY-2750GF | 2400 | 3000 | 2200 | 2750 | YC16VC3600-D31 | 16V | 105.56 | ≤203 | 6000*2700*2800 | 20000 |
| XHZY-3000GF | 2600 | 3250 | 2400 | 3000 | YC16VC4000-D31 | 16V | 105.56 | ≤203 | 6100*2700*2800 | 20000 |
| XHZY-3125GF | 2700 | 3375 | 2500 | 3125 | YC16VC4200-D30 | 16V | 105.56 | ≤203 | 6100*2700*2800 | 21000 |
| XHZY-3250GF | 2800 | 3500 | 2600 | 3250 | YC16VC4500-D30 | 16V | 105.56 | ≤203 | 6200*2700*3000 | 22000 |
| XHZY-3500GF | 3000 | 3750 | 2800 | 3500 | YC16VC4900-D30 | 16V | 105.56 | ≤203 | 6500*2700*3100 | 24000 |



60Hz

YUCHAI diesel engine 3 phase 60HZ 220V~480V

| Genset Model | Standby Power | | Prime Power | | Engine Model | Cyl | Fuel cons. (g/kw.h) | Dimension L*W*H (mm) | Weight (kg) |
|--------------|---------------|------|-------------|------|-----------------|-----|---------------------|----------------------|-------------|
| | KVA | KW | KVA | KW | | | | | |
| XHZY-20GF | 20 | 25 | 18 | 23 | YC4V35-D21 | 4L | ≤232 | 1400*650*1000 | 400 |
| XHZY-30GF | 28 | 35 | 25 | 31 | YC4V45Z-D21 | 4L | ≤232 | 1500*650*1000 | 450 |
| XHZY-38GF | 33 | 41 | 30 | 38 | YC4V55Z-D21 | 4L | ≤232 | 1500*700*1000 | 470 |
| XHZY-44GF | 40 | 50 | 35 | 44 | YC4D65-D20 | 4L | ≤232 | 1500*700*1000 | 600 |
| XHZY-56GF | 50 | 63 | 45 | 56 | YC4D80Z-D20 | 4L | ≤200 | 1700*700*1000 | 650 |
| XHZY-70GF | 60 | 75 | 55 | 69 | YC4D100Z-D20 | 4L | ≤200 | 1800*700*1000 | 800 |
| XHZY-88GF | 80 | 100 | 70 | 88 | YC6B130Z-D20 | 6L | ≤200 | 1900*750*1100 | 900 |
| XHZY-90GF | 85 | 106 | 75 | 94 | YC4D140-D33 | 4L | ≤200 | 1900*750*1100 | 1100 |
| XHZY-100GF | 90 | 113 | 80 | 100 | YC4D155-D33 | 4L | ≤230 | 1900*750*1100 | 1100 |
| XHZY-100GF* | 90 | 113 | 80 | 100 | YC6B160Z-D20 | 6L | ≤192 | 1900*750*1100 | 1150 |
| XHZY-113GF | 100 | 125 | 90 | 113 | YC4D180-D33 | 4L | ≤192 | 2200*1100*140 | 1100 |
| XHZY-150GF | 132 | 165 | 120 | 150 | YC4A205-D32 | 4L | ≤195 | 2300*1100*1500 | 1300 |
| XHZY-150GF* | 132 | 165 | 120 | 150 | YC6B210L-D20 | 6L | ≤195 | 2300*1100*1500 | 1300 |
| XHZY-188GF | 160 | 200 | 150 | 188 | YC6A245-D32 | 6L | ≤195 | 2400*1100*1500 | 1400 |
| XHZY-188GF* | 160 | 200 | 150 | 188 | YC6A245L-D20 | 6L | ≤195 | 2500*1100*1600 | 1400 |
| XHZY-200GF | 176 | 220 | 160 | 200 | YC6MK265Z-D20 | 6L | ≤195 | 2900*1100*1600 | 1500 |
| XHZY-206GF | 180 | 225 | 165 | 206 | YC6A285-D32 | 6L | ≤195 | 2300*1100*1500 | 1700 |
| XHZY-213GF | 190 | 238 | 170 | 213 | YC6A305-D32 | 6L | ≤195 | 2400*1100*1500 | 1800 |
| XHZY-250GF | 220 | 275 | 200 | 250 | YC6MK360L-D20 | 6L | ≤195 | 2500*1100*1600 | 2100 |
| XHZY-250GF* | 220 | 275 | 200 | 250 | YC6MK360-D30 | 6L | ≤195 | 2900*1100*1600 | 2100 |
| XHZY-313GF | 280 | 350 | 250 | 313 | YC6MK420-D31 | 6L | ≤195 | 3000*1200*1600 | 2400 |
| XHZY-313GF | 280 | 350 | 250 | 313 | YC6MK420L-D21 | 6L | ≤195 | 3000*1200*1600 | 2500 |
| XHZY-375GF | 320 | 400 | 300 | 375 | YC6MJ515L-D22 | 6L | ≤195 | 3200*1200*1600 | 2800 |
| XHZY-375GF* | 320 | 400 | 300 | 375 | YC6MK500-D32 | 6L | ≤195 | 3500*1400*1900 | 2900 |
| XHZY-500GF | 440 | 550 | 400 | 500 | YC6T660L-D21 | 6L | ≤195 | 3500*1400*1900 | 3500 |
| XHZY-575GF | 520 | 650 | 460 | 575 | YC6TD780-D32 | 6L | ≤195 | 3600*1400*1900 | 4300 |
| XHZY-625GF | 550 | 688 | 500 | 625 | YC6TD840-D32 | 6L | ≤195 | 3600*1400*2200 | 4700 |
| XHZY-650GF | 570 | 713 | 520 | 650 | YC6TD940-D32 | 6L | ≤195 | 4100*1900*2200 | 5200 |
| XHZY-750GF | 660 | 825 | 600 | 750 | YC6TD1020-D32 | 6L | ≤195 | 4200*2000*2200 | 5700 |
| XHZY-900GF | 800 | 1000 | 720 | 900 | YC6TH1070-D33 | 6L | ≤195 | 4200*2000*2200 | 7100 |
| XHZY-900GF* | 800 | 1000 | 720 | 900 | YC6TH1220-D33 | 6L | ≤195 | 4200*2000*2200 | 7100 |
| XHZY-1000GF | 880 | 1100 | 800 | 1000 | YC6TH1350-D33 | 6L | ≤203 | 4300*2000*2200 | 7800 |
| XHZY-1250GF | 1100 | 1375 | 1000 | 1250 | YC12VTD1680-D33 | 12V | ≤203 | 4400*2000*2200 | 9500 |
| XHZY-1375GF | 1200 | 1500 | 1100 | 1375 | YC12VTD1860-D33 | 12V | ≤206 | 4600*2200*2450 | 9800 |
| XHZY-1500GF | 1320 | 1650 | 1200 | 1500 | YC12VTD2070-D33 | 12V | ≤207 | 4600*2300*2450 | 11000 |
| XHZY-900GF | 800 | 1000 | 720 | 900 | YC12VTD1350-D32 | 12V | ≤211 | 4200*2000*2200 | 11500 |
| XHZY-1125GF | 1000 | 1250 | 900 | 1125 | YC12VTD1500-D32 | 12V | ≤215 | 4300*2000*2200 | 9500 |
| XHZY-1250GF | 1100 | 1375 | 1000 | 1250 | YC12VTD1680-D32 | 12V | ≤212 | 4400*2000*2200 | 10500 |
| XHZY-1375GF | 1200 | 1500 | 1100 | 1375 | YC12VTD1860-D32 | 12V | ≤216 | 4600*2200*2450 | 11000 |
| XHZY-1500GF | 1320 | 1650 | 1200 | 1500 | YC12VTD2070-D32 | 12V | ≤219 | 4600*2300*2450 | 12000 |
| XHZY-1650GF | 1450 | 1813 | 1320 | 1650 | YC12VC2170-D33 | 12V | ≤213 | 4700*2300*2450 | 12800 |
| XHZY-1750GF | 1520 | 1900 | 1400 | 1750 | YC16VTD2270-D32 | 16V | ≤203 | 4800*2400*2500 | 14000 |
| XHZY-175GF | 1650 | 2063 | 1500 | 1875 | YC16VTD2510-D32 | 16V | ≤207 | 5300*2400*2600 | 16000 |
| XHZY-2063GF | 1800 | 2250 | 1650 | 2063 | YC16VTD2700-D32 | 16V | ≤209 | 5500*2500*2600 | 17000 |
| XHZY-2500GF | 2200 | 2750 | 2000 | 2500 | YC20VTD3300-D30 | 16V | ≤208 | 5800*2600*2700 | 20000 |

SDEC



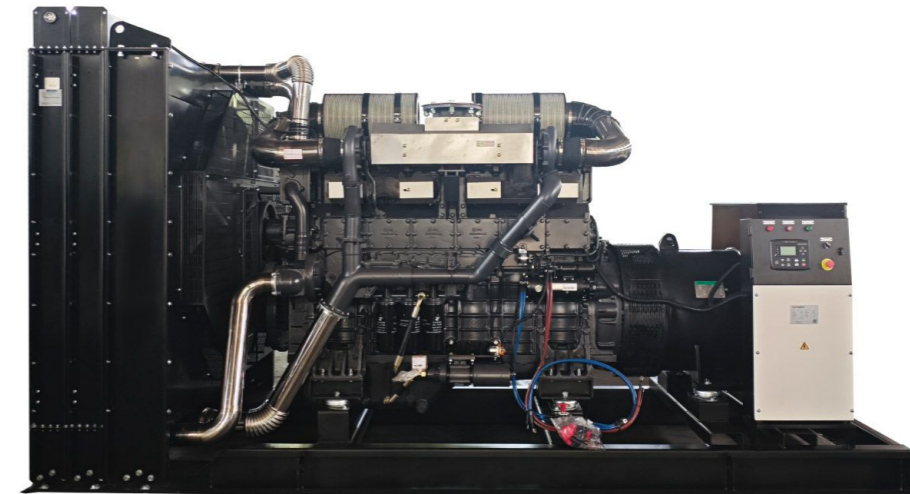
Power range 30kVA-2500kVA

The generator engine features modular design and standard accessories, and adopts high-strength cylinder body, four-valve structure, and precise electronic speed governor.

50Hz

SDEC diesel engine 3 phase 50HZ 400/230V

| Genset Model | Standby Power | | Prime Power | | Engine Model | Displacement (L) | Fuel Consumption (L/h) | Dimension L*W*H (mm) |
|--------------|---------------|------|-------------|------|----------------|------------------|------------------------|----------------------|
| | KVA | KW | KVA | KW | | | | |
| T3 emission | | | | | | | | |
| XHZS-25GF | 28 | 22 | 25 | 20 | 4H4.3-G21 | 4.3 | 8.2 | 1800*820*1250 |
| XHZS-40GF | 44 | 35 | 40 | 32 | 4H4.3-G22 | 4.3 | 11.5 | 1800*820*1250 |
| XHZS-50GF | 55 | 44 | 50 | 40 | 4HT4.3-G21 | 4.3 | 12.8 | 1850*820*1300 |
| XHZS-80GF | 88 | 70 | 80 | 64 | 4HT4.3-G23 | 4.3 | 19.5 | 1800*820*1300 |
| XHZS-105GF | 116 | 92 | 105 | 84 | 4HTAA4.3-G21 | 4.3 | 23 | 2170*880*1400 |
| XHZS-125GF | 135 | 108 | 125 | 100 | 4HTAA4.3-G22 | 4.3 | 28.3 | 2170*880*1600 |
| XHZS-138GF | 151 | 121 | 138 | 110 | 6HTAA6.5-G21 | 6.5 | 30.5 | 2170*880*1400 |
| XHZS-150GF | 161 | 129 | 150 | 120 | 6HTAA6.5-G22 | 6.5 | 33.1 | 2170*880*1400 |
| XHZS-188GF | 202 | 162 | 188 | 150 | 6HTAA6.5-G23 | 6.5 | 39.7 | 2350*950*1600 |
| XHZS-200GF | 220 | 176 | 200 | 160 | 6DTAA8.9-G21 | 8.82 | 44.1 | 2550*980*1600 |
| XHZS-250GF | 275 | 220 | 250 | 200 | 6DTAA8.9-G22 | 8.82 | 52.7 | 2550*980*1650 |
| XHZS-250GF* | 275 | 220 | 250 | 200 | 6DTAA8.9-G23 | 8.82 | 55.1 | 2550*980*1650 |
| XHZS-350GF | 385 | 308 | 350 | 280 | 6ETAA11.8-G21 | 11.8 | 72.9 | 3150*1100*1850 |
| XHZS-400GF | 438 | 350 | 400 | 320 | 6ETAA12.8-G32 | 12.8 | 100.3 | 3150*1100*1850 |
| XHZS-438GF | 500 | 400 | 438 | 350 | 6ETAA12.8-G31 | 12.8 | 99.1 | 3150*1100*1850 |
| XHZS-350GF* | 385 | 308 | 350 | 280 | 6ETAA11.8-G33 | 11.8 | 71.6 | 3150*1100*1850 |
| XHZS-375GF | 413 | 330 | 375 | 300 | 6ETAA11.8-G31 | 11.8 | 79.3 | 3150*1100*1850 |
| XHZS-500GF | 563 | 450 | 500 | 400 | 6ETAA12.8-G310 | 12.8 | 102.1 | 3600*1690*2120 |
| XHZS-500GF* | 625 | 500 | 500 | 450 | 6KTAA25-G35 | 25.8 | 124 | 3550*1400*2000 |
| XHZS-625GF | 688 | 550 | 625 | 500 | 6KTAA25-G34 | 25.8 | 140 | 3600*1690*2100 |
| XHZS-688GF | 750 | 600 | 688 | 550 | 6KTAA25-G33 | 25.8 | 152 | 3900*1800*2200 |
| XHZS-750GF | 825 | 660 | 750 | 600 | 6KTAA25-G32 | 25.8 | 163 | 3900*1800*2200 |
| XHZS-800GF | 875 | 700 | 800 | 640 | 6KTAA25-G31 | 25.8 | 178 | 4200*1800*2200 |
| XHZS-900GF | 1000 | 800 | 900 | 720 | 6WTAA35-G32 | 35.1 | 192 | 4300*1800*2300 |
| XHZS-1000GF | 1100 | 880 | 1000 | 800 | 6WTAA35-G31 | 35.1 | 265 | 4300*1800*2300 |
| XHZS-1125GF | 1250 | 1000 | 1125 | 900 | 6WTAA35-G310 | 35.1 | 240 | 4400*1800*2400 |
| XHZS-1250GF | 1375 | 1100 | 1250 | 1000 | 6WTAA35-G311 | 35.1 | 265 | 4500*1900*2400 |
| XHZS-1375GF | 1563 | 1250 | 1375 | 1100 | 12KTA58-G36 | 57.2 | 305 | 4500*1900*2400 |
| XHZS-1500GF | 1688 | 1350 | 1500 | 1200 | 12KTA58-G35 | 57.2 | 339 | 4600*2000*2400 |
| XHZS-1688GF | 1875 | 1500 | 1688 | 1350 | 12KTA58-G34 | 57.2 | 372 | 4700*1000*2400 |
| XHZS-1750GF* | 1938 | 1550 | 1750 | 1400 | 12KTA58-G33 | 57.2 | 410 | 4800*2000*2400 |
| XHZS-1875GF | 2000 | 1600 | 1875 | 1500 | 12KTA58-G32 | 57.2 | 441 | 4800*2000*2400 |
| XHZS-2125GF | 2250 | 1800 | 2125 | 1700 | 12KTA58-G31 | 57.2 | 437 | 5000*2000*2400 |
| T2 emission | | | | | | | | |
| XHZS-63GF | 69 | 55 | 63 | 50 | SC4H95D2 | 4.3 | 14.8 | 2000*850*1400 |
| XHZS-80GF | 88 | 70 | 80 | 64 | SC4H115D2 | 4.3 | 20.2 | 2000*800*1360 |
| XHZS-113GF | 124 | 99 | 113 | 90 | SC4H160D2 | 4.3 | 25 | 2000*920*1450 |



50Hz

SDEC diesel engine 3 phase 50HZ 400/230V

| Genset Model | Standby Power | | Prime Power | | Engine Model | Displacement (L) | Fuel Consumption (L/h) | Dimension L*W*H (mm) |
|--------------|---------------|-----|-------------|-----|--------------|------------------|------------------------|----------------------|
| | KVA | KW | KVA | KW | | | | |
| T2 emission | | | | | | | | |
| XHZS-125GF | 135 | 108 | 125 | 100 | SC4H180D2 | 4.3 | 28.6 | 2000*920*1435 |
| XHZS-169GF | 186 | 149 | 169 | 135 | SC7H230D2 | 6.44 | 36.5 | 2580*950*1600 |
| XHZS-188GF* | 202 | 162 | 188 | 150 | SC7H250D2 | 6.44 | 39.7 | 2500*990*1600 |
| XHZS-206GF | 227 | 182 | 206 | 165 | SC8D280D2 | 8.27 | 44.9 | 2600*1000*1750 |
| XHZS-225GF | 248 | 198 | 225 | 180 | SC9D310D2 | 8.82 | 50.4 | 2600*1000*1700 |
| XHZS-250GF | 275 | 220 | 250 | 200 | SC9D340D2 | 8.82 | 53.6 | 2600*950*1600 |
| XHZS-350GF | 385 | 308 | 350 | 280 | SC12E460D2 | 11.8 | 71.6 | 3200*1100*1750 |
| XHZS-375GF | 413 | 330 | 375 | 300 | SC15G500D2 | 14.16 | 81.2 | 3200*1250*1850 |
| XHZS-450GF | 495 | 396 | 450 | 360 | SC25G610D2 | 25.8 | 98 | 3550*1400*2000 |
| XHZS-500GF | 550 | 440 | 500 | 400 | SC25G690D2 | 25.8 | 111 | 3600*1700*2150 |
| XHZS-563GF | 615 | 492 | 563 | 450 | SC27G755D2 | 26.6 | 122.2 | 3550*1400*2000 |
| XHZS-625GF | 680 | 544 | 625 | 500 | SC27G830D2 | 26.6 | 141 | 3600*1700*2100 |
| XHZS-750GF | 825 | 660 | 750 | 600 | SC33W990D2 | 32.8 | 142.2 | 4400*1800*2300 |
| XHZS-900GF | 990 | 792 | 900 | 720 | SC33W1150D2 | 32.8 | 186.4 | 4400*1800*2300 |

60Hz

SDEC diesel engine 3 phase 60HZ 220V~480V

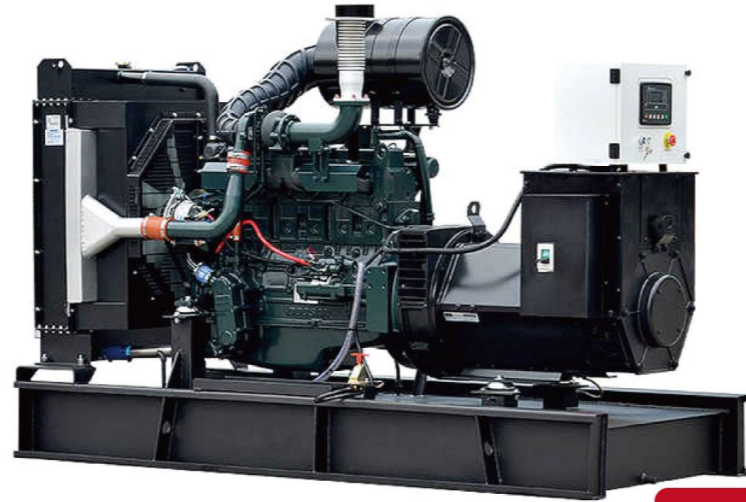
| Genset Model | Standby Power | | Prime Power | | Engine Model | Displacement (L) | Fuel Consumption (L/h) | Dimension L*W*H (mm) |
|--------------|---------------|-----|-------------|-----|---------------|------------------|------------------------|----------------------|
| | KVA | KW | KVA | KW | | | | |
| XHZS-30GF | 34 | 28 | 31 | 25 | 4H4.3-G21 | 4.3 | 9.5 | 1800*820*1247 |
| XHZS-50GF | 55 | 44 | 50 | 40 | 4H4.3-G22 | 4.3 | 13.8 | 1800*820*1247 |
| XHZS-85GF | 93 | 74 | 85 | 68 | 4HT4.3-G23 | 4.3 | 21.6 | 2170*880*1278 |
| XHZS-110GF | 124 | 99 | 113 | 90 | 4HTAA4.3-G21 | 4.3 | 25.6 | 2170*880*1359 |
| XHZS-125GF | 138 | 110 | 125 | 100 | 4HTAA4.3-G22 | 4.3 | 28.8 | 2170*880*1392 |
| XHZS-150GF | 165 | 132 | 150 | 120 | 6HTAA6.5-G21 | 6.5 | 33.1 | 2170*880*1397 |
| XHZS-160GF | 175 | 140 | 160 | 128 | 6HTAA6.5-G22 | 6.5 | 36.3 | 2170*880*1397 |
| XHZS-206GF | 227 | 182 | 206 | 165 | 6HTAA6.5-G23 | 6.5 | 43.4 | 2350*950*1570 |
| XHZS-228GF | 250 | 200 | 228 | 182 | 6DTAA8.9-G21 | 8.82 | 50.9 | 2550*980*1582 |
| XHZS-263GF | 289 | 231 | 263 | 210 | 6DTAA8.9-G22 | 8.82 | 58.9 | 2550*980*1650 |
| XHZS-275GF | 300 | 240 | 275 | 220 | 6DTAA8.9-G23 | 8.82 | 63 | 2550*980*1650 |
| XHZS-350GF | 385 | 308 | 350 | 280 | 6ETAA11.8-G21 | 11.8 | 75.8 | 3150*1100*1825 |
| XHZS-368GF | 405 | 323 | 368 | 294 | 6ETAA11.8-G31 | 11.8 | 79.5 | 3150*1100*1825 |

DOOSAN



Power range 10VA–1200kVA

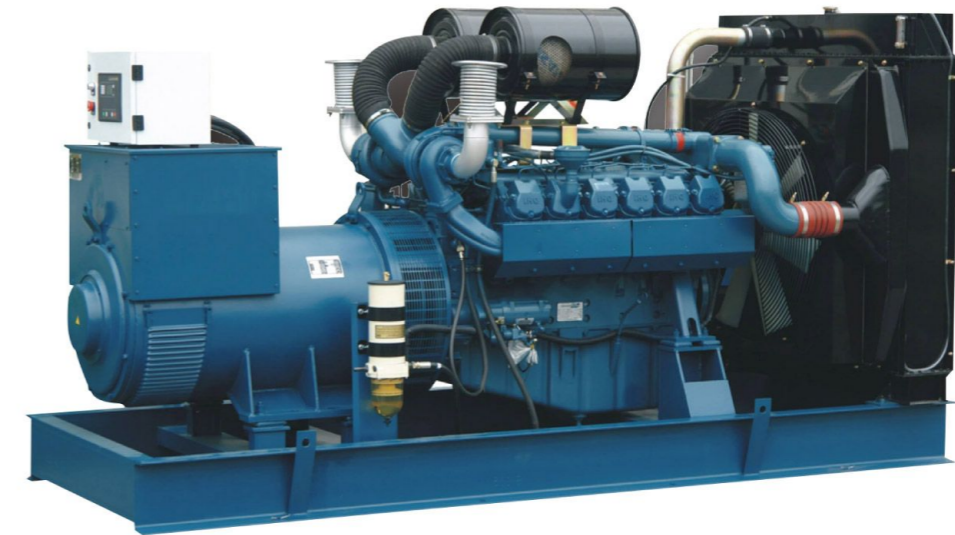
DOOSAN located in Korea first started producing diesel engines in 1958. The products have a high cost performance with the power range from 10VA–1200kVA, meet the domestic and international standards like GB/T2820, GB1105, YD/T502, SO8525–3, ISO3046, ISO8525 and US EPA and CARB emission standards.



50Hz

DOOSAN diesel engine 3 phase 50HZ 400/230V

| Genset Model | Standby Power | | Prime Power | | Engine type | Dimension Open type L*W*H (mm) |
|--------------|---------------|-----|-------------|-----|-------------|-----------------------------------|
| | KVA | KW | KVA | KW | | |
| XHZD-10GF | 8 | 6 | 7 | 5 | SP103NA | 1500*750*1030 |
| XHZD-15GF | 15 | 12 | 14 | 11 | SP173NA | 1500*750*1030 |
| XHZD-20GF | 20 | 15 | 18 | 14 | SP224NA | 1500*750*1030 |
| XHZD-30GF | 28 | 22 | 25 | 20 | SP244TA | 1500*750*1030 |
| XHZD-40GF | 41 | 33 | 38 | 30 | SP244CA | 1700*750*1150 |
| XHZD-55GF | 55 | 44 | 50 | 40 | SP344CA | 1850*800*1180 |
| XHZD-70GF | 70 | 55 | 63 | 50 | SP344CB | 1850*800*1180 |
| XHZD-90GF | 90 | 72 | 81 | 65 | SP344CC | 1850*800*1180 |
| XHZD-95GF | 91 | 73 | 83 | 66 | D1146 | 1900*800*1250 |
| XHZD-130GF | 131 | 105 | 119 | 95 | D1146T | 2250*880*1300 |
| XHZD-165GF | 165 | 132 | 150 | 120 | DP086TA | 2650*1000*1800 |
| XHZD-190GF | 186 | 149 | 169 | 135 | P086TI-1 | 2650*1000*1800 |
| XHZD-220GF | 220 | 176 | 200 | 160 | P086TI | 2650*1000*1800 |
| XHZD-220GF | 220 | 176 | 200 | 160 | DP086LA | 2650*1000*1800 |
| XHZD-300GF | 303 | 242 | 275 | 220 | P126TI | 3100*1100*2000 |
| XHZD-330GF | 330 | 264 | 300 | 240 | P126TI-II | 3100*1100*2000 |
| XHZD-415GF | 415 | 330 | 375 | 300 | DP126LB | 3100*1100*2000 |
| XHZD-2440GF | 440 | 352 | 400 | 320 | P158LE | 3400*1350*2200 |
| XHZD-510GF | 510 | 407 | 463 | 370 | P158FE | 3400*1350*2200 |
| XHZD-510GF* | 510 | 407 | 463 | 370 | DP158LC | 3400*1350*2200 |
| XHZD-600GF | 584 | 468 | 531 | 425 | DP158LD | 3400*1350*2200 |
| XHZD-630GF | 633 | 506 | 575 | 460 | DP180LA | 3700*1700*2200 |
| XHZD-688GF | 688 | 550 | 625 | 500 | DP180LB | 3700*1700*2200 |
| XHZD-688GF* | 688 | 550 | 625 | 500 | P180FE | 3700*1700*2200 |
| XHZD-760GF | 756 | 605 | 688 | 550 | P222FE | 3700*1700*2200 |
| XHZD-760GF* | 756 | 605 | 688 | 550 | DP222LB | 3700*1700*2200 |
| XHZD-825GF | 825 | 660 | 750 | 600 | DP222LC | 3700*1700*2200 |
| XHZD-825GF* | 825 | 660 | 750 | 630 | DP222LP | 3700*1700*2200 |
| XHZD-840GF | 840 | 671 | 763 | 610 | DP222CA | 3700*1700*2200 |
| XHZD-840GF* | 840 | 671 | 763 | 610 | DP222CA-2 | 3700*1700*2200 |
| XHZD-900GF | 895 | 715 | 813 | 650 | DP222CB-2 | 3700*1700*2200 |
| XHZD-900GF* | 895 | 715 | 813 | 650 | DP222CB | 3700*1700*2200 |
| XHZD-1000GF | 1004 | 803 | 913 | 730 | DP222CC | 3700*1700*2200 |
| XHZD-1000GF* | 1004 | 803 | 913 | 730 | DP222CC-2 | 3700*1700*2200 |



60Hz

DOOSAN diesel engine 3 phase 60HZ 220V~480V

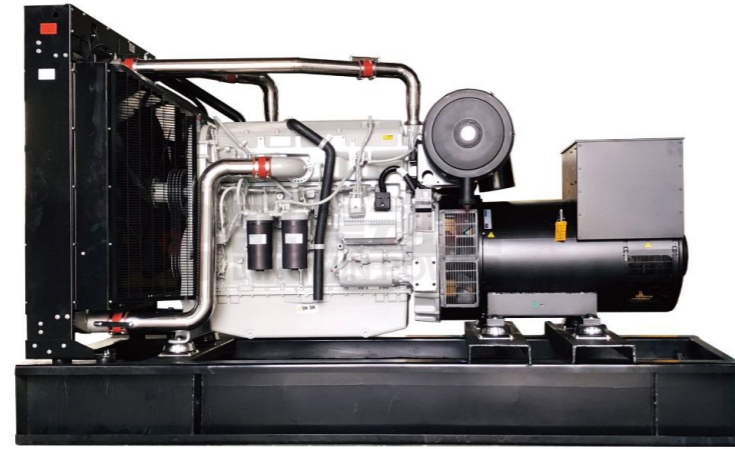
| Genset Model | Standby Power | | Prime Power | | Engine type | Dimension Open type L*W*H (mm) |
|--------------|---------------|-----|-------------|-----|-------------|-----------------------------------|
| | KVA | KW | KVA | KW | | |
| XHZD-10GF | 10 | 8 | 9 | 7 | SP103NE | 1500*750*1050 |
| XHZD-10GF* | 10 | 8 | 9 | 7 | SP103NH | 1500*750*1050 |
| XHZD-20GF | 18 | 14 | 16 | 13 | SP173NC | 1500*750*1050 |
| XHZD-20GF* | 18 | 14 | 16 | 13 | SP173ND | 1500*750*1050 |
| XHZD-30GF | 26 | 21 | 24 | 19 | SP224NC | 1500*750*1050 |
| XHZD-30GF* | 26 | 21 | 24 | 19 | SP183CA | 1500*750*1050 |
| XHZD-35GF | 33 | 26 | 30 | 24 | SP244TC | 1500*750*1050 |
| XHZD-50GF | 50 | 40 | 44 | 35 | SP244CA | 1700*750*1150 |
| XHZD-70GF | 70 | 55 | 63 | 50 | SP344CA | 1850*800*1180 |
| XHZD-75GF | 72 | 57 | 65 | 52 | SP344CA | 1850*800*1180 |
| XHZD-80GF | 80 | 64 | 73 | 58 | SP344CB | 1850*800*1180 |
| XHZD-100GF | 102 | 81 | 93 | 74 | SP344CC | 1850*800*1180 |
| XHZD-110GF | 110 | 88 | 100 | 80 | D1146 | 1900*800*1250 |
| XHZD-150GF | 150 | 120 | 136 | 109 | D1146T | 2250*880*1300 |
| XHZD-200GF | 206 | 165 | 188 | 150 | DP086TA | 2650*1000*1800 |
| XHZD-210GF | 210 | 167 | 190 | 152 | P086TI-1 | 2650*1000*1800 |
| XHZD-240GF | 241 | 193 | 219 | 175 | P086TI | 2650*1000*1800 |
| XHZD-240GF* | 241 | 193 | 219 | 175 | DP086LA | 2650*1000*1800 |
| XHZD-345GF | 345 | 275 | 313 | 250 | P126TI | 3100*1100*2000 |
| XHZD-380GF* | 380 | 303 | 345 | 275 | P126TI-II | 3100*1100*2000 |
| XHZD-455GF | 454 | 363 | 413 | 330 | DP126LB | 3100*1100*2000 |
| XHZD-500GF | 500 | 400 | 450 | 360 | P158LE | 3400*1350*2200 |
| XHZD-540GF | 536 | 429 | 488 | 390 | P158FE | 3400*1350*2200 |
| XHZD-580GF | 580 | 462 | 525 | 420 | DP158LC | 3400*1350*2200 |
| XHZD-605GF | 605 | 484 | 550 | 440 | DP158LD | 3400*1350*2200 |
| XHZD-700GF | 693 | 554 | 630 | 504 | DP180LA | 3700*1700*2200 |
| XHZD-700GF* | 693 | 554 | 630 | 504 | P180FE | 3700*1700*2200 |
| XHZD-750GF | 745 | 595 | 675 | 540 | DP180LB | 3700*1700*2200 |
| XHZD-825GF | 825 | 660 | 750 | 600 | P222FE | 3700*1700*2200 |
| XHZD-825GF* | 825 | 660 | 750 | 600 | DP222LA | 3700*1700*2200 |
| XHZD-880GF | 880 | 704 | 800 | 640 | DP222LB | 3700*1700*2200 |
| XHZD-935F | 935 | 748 | 850 | 680 | DP222LC | 4400*2000*2250 |
| XHZD-950GF | 950 | 760 | 863 | 690 | DP222CA | 3700*1700*2200 |
| XHZD-950GF* | 950 | 760 | 863 | 690 | DP222CA-2 | 3700*1700*2200 |
| XHZD-1020GF | 1018 | 814 | 925 | 740 | DP222CB-2 | 3700*1700*2200 |
| XHZD-1020GF* | 1018 | 814 | 925 | 740 | DP222CB | 3700*1700*2200 |
| XHZD-1100GF | 1100 | 880 | 1000 | 800 | DP222CC | 4400*2000*2250 |
| XHZD-1100GF* | 1100 | 880 | 1000 | 800 | DP222CC-2 | 4400*2000*2250 |

PERKINS



Power range 10kVA-2000kVA

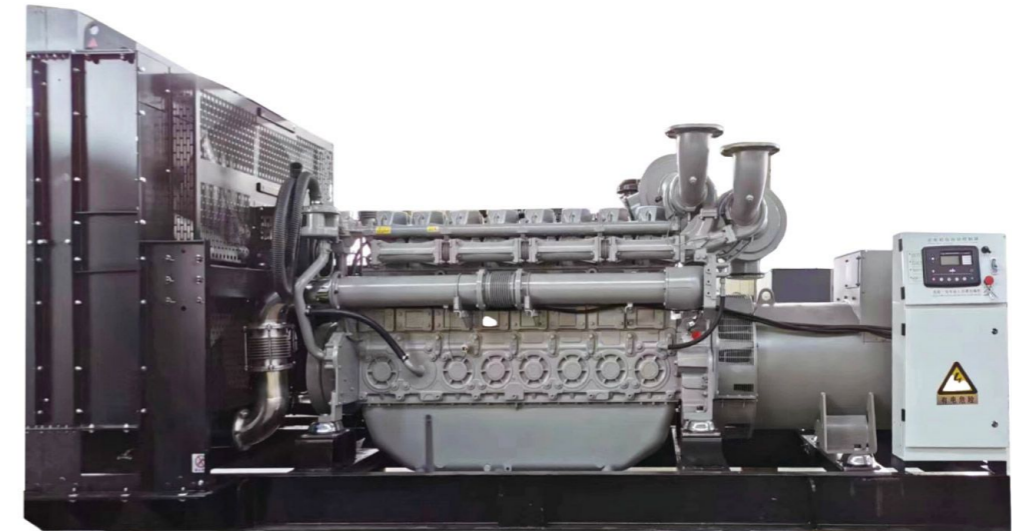
Adopting Perkins engines, featuring strong transient loading capacity, good maintainability and long service life.



50Hz

PERKINS diesel engine 3 phase 50HZ 400/230V

| Genset Model | Standby Power | | Prime Power | | Engine type | Dimension Open type L*W*H (mm) | Weight (kg) |
|--------------|---------------|------|-------------|------|-----------------|-----------------------------------|----------------|
| | KVA | KW | KVA | KW | | | |
| XHZZ-10GF | 10 | 8 | 9 | 7 | 403A-11 G1 | 1350*500*1090 | 335 |
| XHZZ-10GF* | 10 | 8 | 9 | 7 | 403D-11G | 1350*500*1090 | 335 |
| XHZZ-15GF | 14 | 11 | 13 | 10 | 403A-15G1 | 1430*500*1150 | 400 |
| XHZZ-15GF* | 14 | 11 | 13 | 10 | 403D-15G | 1435*500*1150 | 415 |
| XHZZ-20GF | 16 | 13 | 15 | 12 | 403A-15G2 | 1435*500*1150 | 415 |
| XHZZ-25GF | 22 | 18 | 20 | 16 | 404A-22G1 | 1610*560*1195 | 525 |
| XHZZ-25GF* | 22 | 18 | 20 | 16 | 404D-22G | 1610*560*1195 | 525 |
| XHZZ-30GF | 30 | 24 | 27 | 22 | 404D-22TG | 1680*560*1195 | 550 |
| XHZZ-35GF | 32 | 26 | 30 | 24 | 1103A-33G | 1840*700*1270 | 860 |
| XHZZ-50GF | 50 | 40 | 45 | 36 | 1103A-33TG1 | 1960*700*1350 | 870 |
| XHZZ-70GF | 66 | 53 | 60 | 48 | 1103A-33TG2 | 2050*700*1350 | 980 |
| XHZZ-80GF | 72 | 57 | 65 | 52 | 1104A-44TG1 | 2200*700*1350 | 1050 |
| XHZZ-90GF | 88 | 70 | 80 | 64 | 1104A-44TG2 | 2200*700*1350 | 1080 |
| XHZZ-90GF* | 88 | 70 | 80 | 64 | 1104C-44TAG1 | 2280*700*1350 | 1150 |
| XHZZ-110GF | 110 | 88 | 100 | 80 | 1104C-44TAG2 | 2280*700*1350 | 1250 |
| XHZZ-150GF | 150 | 120 | 135 | 108 | 1106A-70TG1 | 2565*850*1425 | 1522 |
| XHZZ-170GF | 165 | 132 | 150 | 120 | 1106A-70TAG2 | 2750*850*1350 | 1580 |
| XHZZ-200GF | 200 | 160 | 180 | 144 | 1106A-70TAG3 | 2850*850*1350 | 1590 |
| XHZZ-220GF | 220 | 176 | 200 | 160 | 1106A-70TAG4 | 2850*1045*1825 | 1600 |
| XHZZ-260GF | 254 | 203 | 231 | 185 | 1506A-E88TAG2 | 2980*1055*1695 | 2335 |
| XHZZ-300GF | 283 | 226 | 257 | 206 | 1506A-E88TAG3 | 2980*1055*1695 | 2350 |
| XHZZ-350GF | 338 | 270 | 307 | 246 | 1506A-E88TAG5 | 3080*1090*1700 | 2500 |
| XHZZ-400GF | 400 | 320 | 350 | 280 | 2206C-E13TAG2 | 3460*1150*2030 | 2980 |
| XHZZ-450GF | 450 | 360 | 400 | 320 | 2206C-E13TAG3 | 3460*1150*2030 | 3135 |
| XHZZ-500GF | 500 | 400 | 455 | 364 | 2506C-E15TAG1 | 3780*1270*2020 | 3760 |
| XHZZ-550GF | 550 | 440 | 500 | 400 | 2506C-E 15TAG2 | 3780*1270*2020 | 3880 |
| XHZZ-650GF | 650 | 520 | 591 | 473 | 2806C-E 18TAG1A | 3780*1536*2180 | 4555 |
| XHZZ-700GF | 700 | 560 | 650 | 520 | 2806A-E18TAG2 | 3780*1536*2180 | 4600 |
| XHZZ-900GF | 820 | 656 | 746 | 597 | 4006-23TAG2A | 4250*1690*2150 | 6460 |
| XHZZ-900GF | 880 | 704 | 800 | 640 | 4006-23TAG3A | 4250*1690*2150 | 6500 |
| XHZZ-1000GF | 1000 | 800 | 910 | 728 | 4008TAG1A | 4735*2261*2256 | 7400 |
| XHZZ-1200GF | 1125 | 900 | 1022 | 818 | 4008TAG2A | 4735*2261*2256 | 7450 |
| XHZZ-1200GF* | 1125 | 900 | 1022 | 818 | 4008TAG2 | 4735*2261*2256 | 7450 |
| XHZZ-1250GF | 1250 | 1000 | 1125 | 900 | 4008-30TAG3 | 4735*2261*2256 | 7450 |
| XHZZ-1400GF | 1375 | 1100 | 1250 | 1000 | 4012-46TWG2A | 4800*2100*2297 | 9030 |
| XHZZ-1400GF* | 1375 | 1100 | 1250 | 1000 | 4012-46TWG2 | 4800*2100*2297 | 9050 |
| XHZZ-1500GF | 1500 | 1200 | 1375 | 1100 | 4012-46TWG3A | 4800*2100*2297 | 9100 |
| XHZZ-1700GF | 1650 | 1320 | 1500 | 1200 | 4012-46TAG2A | 4900*2100*2297 | 9730 |
| XHZZ-1900GF | 1850 | 1480 | 1688 | 1350 | 4012-46TAG3A | 4900*2100*2297 | 9730 |
| XHZZ-2000GF | 2000 | 1600 | 1850 | 1480 | 4016TAG1A | 5035*2597*2150 | 10300 |
| XHZZ-2200GF | 2200 | 1760 | 2000 | 1600 | 4016TAG2A | 5035*2597*2150 | 10300 |
| XHZZ-2200GF | 2200 | 1760 | 2000 | 1600 | 4016-61TRG2 | 5250*2600*2150 | 10270 |
| XHZZ-2500GF | 2500 | 2000 | 2250 | 1800 | 4016-61TRG3 | 5250*2600*2150 | 11000 |



60Hz

PERKINS diesel engine 3 phase 60HZ 220V~480V

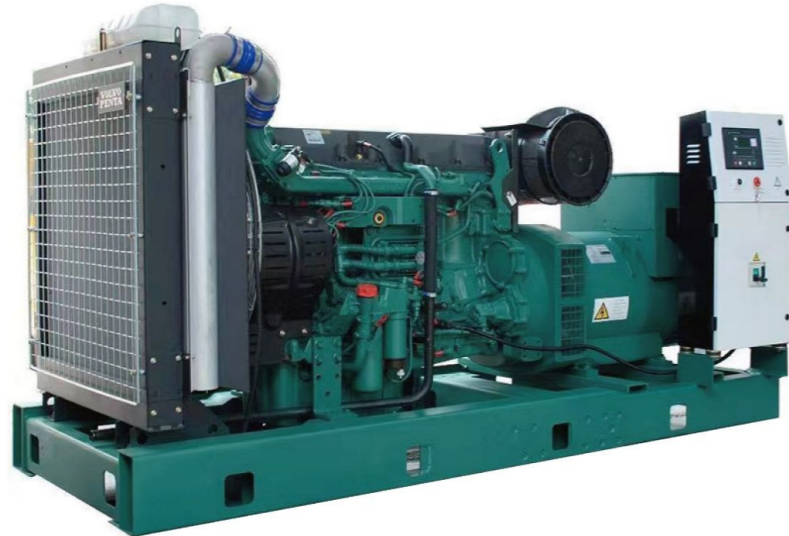
| Genset Model | Standby Power | | Prime Power | | Engine type | Dimension Open type L*W*H (mm) | Weight (kg) |
|--------------|---------------|------|-------------|------|------------------|-----------------------------------|----------------|
| | KVA | KW | KVA | KW | | | |
| XHZZ-15GF | 13 | 10 | 11 | 9 | 403D-11G | 1350*500*1090 | 335 |
| XHZZ-20GF | 16 | 13 | 15 | 12 | 403D-15G | 1435*500*1150 | 415 |
| XHZZ-20GF* | 19 | 15 | 17 | 14 | 403A-15G2 | 1435*500*1150 | 415 |
| XHZZ-30GF | 26 | 21 | 24 | 19 | 404D-22G | 1610*560*1195 | 525 |
| XHZZ-35GF | 35 | 29 | 33 | 26 | 404D-22TG | 1610*560*1195 | 525 |
| XHZZ-40GF | 38 | 30 | 35 | 28 | 1103A-33G | 1840*700*1270 | 860 |
| XHZZ-60GF | 59 | 47 | 54 | 43 | 1103A-33TG1 | 1960*700*1350 | 870 |
| XHZZ-80GF | 75 | 60 | 68 | 55 | 1103A-33TG2 | 2050*700*1350 | 980 |
| XHZZ-90GF | 84 | 67 | 76 | 61 | 1104A-44TG1 | 2200*700*1350 | 1050 |
| XHZZ-100GF | 100 | 80 | 90 | 73 | 1104A-44TG2 | 2200*700*1350 | 1080 |
| XHZZ-100GF* | 100 | 80 | 90 | 72 | 1104C-44TAG1 | 2280*700*1350 | 1150 |
| XHZZ-130GF | 125 | 100 | 115 | 92 | 1104C-44TAG2 | 2280*700*1350 | 1250 |
| XHZZ-170GF | 169 | 135 | 152 | 122 | 1106A-70TG1 | 2565*850*1425 | 1522 |
| XHZZ-200GF | 188 | 150 | 169 | 135 | 1106A-70TAG2 | 2750*850*1350 | 1580 |
| XHZZ-220GF | 219 | 175 | 197 | 158 | 1106A-70TAG3 | 2850*850*1350 | 1590 |
| XHZZ-280GF | 273 | 218 | 248 | 198 | 1506A-E88TAG2 | 2980*1055*1695 | 2335 |
| XHZZ-320GF | 320 | 256 | 290 | 232 | 1506A-E88TAG3 | 2980*1055*1695 | 2350 |
| XHZZ-400GF | 390 | 312 | 352 | 282 | 1506A-E88TAG5 | 3080*1090*1700 | 2500 |
| XHZZ-440GF | 438 | 350 | 400 | 320 | 2206C-E13TAG2 | 3460*1150*2030 | 2980 |
| XHZZ-440GF* | 438 | 350 | 400 | 320 | 2206C-E13TAG3 | 3460*1150*2030 | 3135 |
| XHZZ-580GF | 563 | 450 | 500 | 400 | 2506C-E15TAG1 | 3780*1270*2020 | 3760 |
| XHZZ-580GF* | 563 | 450 | 500 | 400 | 2506C-E 15TAG2 | 3780*1270*2020 | 3880 |
| XHZZ-700GF | 687 | 550 | 625 | 500 | 2806C-E 18TAG 1A | 3780*1536*2180 | 4555 |
| XHZZ-700GF* | 687 | 550 | 625 | 500 | 2806A-E18TAG2 | 3780*1536*2180 | 4555 |
| XHZZ-830GF | 825 | 660 | 750 | 600 | 4006-23TAG2A | 4250*1690*2150 | 6460 |
| XHZZ-950GF | 940 | 750 | 849 | 679 | 4006-23TAG3A | 4250*1690*2150 | 6500 |
| XHZZ-1100GF | 1100 | 880 | 1000 | 800 | 4008TAG2 | 4735*2261*2256 | 7450 |
| XHZZ-1375GF | 1375 | 1100 | 1250 | 1000 | 4012-46TWG2A | 4800*2100*2297 | 9030 |
| XHZZ-1500GF | 1500 | 1200 | 1375 | 1100 | 4012-46TWG3A | 4800*2100*2297 | 9100 |
| XHZZ-1650GF | 1650 | 1320 | 1500 | 1200 | 4012-46TAG2A | 4900*2100*2297 | 9730 |
| XHZZ-1850GF | 1850 | 1480 | 1690 | 1350 | 4012-46TAG3A | 4900*2100*2297 | 9730 |

VOLVO

VOLVO PENTA

Power range 85kVA–700kVA

While its core activity is the production, distribution and sale of trucks, buses and construction equipment, Volvo also supplies marine and industrial drive systems and financial services. In 2016, it was the world's second largest manufacturer of heavy-duty trucks.



50Hz

VOLVO diesel engine 3 phase 50HZ 400/230V

| Genset Model | Standby Power | | Prime Power | | Engine Model | DSPL (L) | Lubricant capacity (L) | Fuel Consumption (L/h) | Gov. | Dimension L*W*H (mm) |
|--------------|---------------|-----|-------------|-----|--------------|----------|------------------------|------------------------|-------|----------------------|
| | KVA | KW | KVA | KW | | | | | | |
| XHZV-95GF | 75 | 94 | 68 | 85 | TAD530GE | 4.76 | 13 | 19.1 | ECU | 2200*800*1500 |
| XHZV-140GF | 100 | 138 | 100 | 125 | TAD531GE | 4.76 | 13 | 22.5 | ECU | 2200*900*1500 |
| XHZV-155GF | 123 | 155 | 112 | 140 | TAD532GE | 4.76 | 13 | 28.4 | ECU | 2300*900*1500 |
| XHZV-175GF | 138 | 173 | 125 | 156 | TAD731GE | 7.15 | 20 | 33.9 | ECU | 2300*900*1500 |
| XHZV-210GF | 165 | 206 | 150 | 188 | TAD732GE | 7.15 | 34 | 39.8 | ECU | 2400*900*1500 |
| XHZV-220GF | 176 | 220 | 160 | 200 | TAD733GE | 7.15 | 34 | 44.7 | ECU | 2400*900*1500 |
| XHZV-280GF | 220 | 275 | 200 | 250 | TAD734GE | 7.15 | 29 | 52.6 | EMS 2 | 2500*1000*1550 |
| XHZV-350GF | 275 | 345 | 250 | 313 | TAD1341GE | 12.78 | 36 | 61.8 | EMS 2 | 2600*1000*1600 |
| XHZV-400GF | 308 | 385 | 280 | 350 | TAD1342GE | 12.78 | 36 | 68.1 | EMS 2 | 2700*1100*1600 |
| XHZV-420GF | 330 | 413 | 300 | 375 | TAD1342GE | 12.78 | 36 | 68.1 | EMS 2 | 2800*1100*1600 |
| XHZV-450GF | 352 | 440 | 320 | 400 | TAD1343GE | 12.78 | 36 | 73.4 | EMS 2 | 2900*1200*1600 |
| XHZV-500GF | 400 | 500 | 360 | 450 | TAD1344GE | 12.78 | 36 | 80.8 | EMS 2 | 2900*1100*1600 |
| XHZV-550GF | 440 | 550 | 400 | 500 | TAD1345GE | 12.78 | 36 | 89.5 | EMS 2 | 3000*1200*1700 |
| XHZV-630GF | 500 | 625 | 450 | 563 | TAD1641GE | 16.12 | 48 | 100.6 | EMS 2 | 3100*1200*1700 |
| XHZV-700GF | 550 | 700 | 500 | 625 | TAD1642GE | 16.12 | 48 | 117.2 | EMS 2 | 3200*1300*1800 |
| XHZV-760GF | 605 | 756 | 550 | 688 | TWD1643GE | 16.12 | 48 | 125.5 | EMS 2 | 3300*1400*1800 |

MITSUBISHI



Power range 600kVA–2500kVA

Mitsubishi Industrial engines can meet all the current EPA regulations. Mitsubishi industrial engines have a worldwide reputation for reliability, fuel economy, and long life.



50Hz

MITSUBISHI diesel engine 3 phase 50HZ 400/230V

| Genset Model | Output power | | Engine Model | CYL | Displacement (L) | Lube (L) | Fuel consumption (g/kw.h) | Dimension Open type L*W*H (mm) | Weight (kg) |
|---------------|--------------|------|--------------|-----|------------------|----------|---------------------------|--------------------------------|-------------|
| | KVA | KW | | | | | | | |
| XHZM-SL480GF | 600 | 480 | S6R-PTA | 6 | 24.5 | 84 | 196 | 3600*1600*2300 | 5000 |
| XHZM-SL520GF | 650 | 520 | S6R2-PTA | 6 | 30 | 84 | 196 | 3600*1600*2300 | 5100 |
| XHZM-SL600GF | 750 | 600 | S6R2-PTAA | 6 | 30 | 84 | 196 | 4000*1800*1950 | 5750 |
| XHZM-SL600GF | 750 | 600 | S12A2-PTA | 12 | 33.9 | 100 | 221 | 4000*1800*1950 | 6100 |
| XHZM-SL800GF | 1000 | 800 | S12H-PTA | 12 | 37.1 | 180 | 206 | 4400*1800*2500 | 8200 |
| XHZM-SL1000GF | 1250 | 1000 | S12R-PTA | 12 | 49 | 150 | 221 | 4650*2100*2600 | 9100 |
| XHZM-SL1100GF | 1375 | 1100 | S12R-PTA2 | 12 | 49 | 150 | 221 | 4650*2200*2700 | 9600 |
| XHZM-SL1200GF | 1500 | 1200 | S12R-PTAA2 | 12 | 49 | 150 | 209 | 4650*2200*2700 | 10000 |
| XHZM-SL1300GF | 1625 | 1300 | S16R-PTA | 16 | 65.4 | 200 | 206 | 5400*2500*3000 | 11750 |
| XHZM-SL1500GF | 1875 | 1500 | S16R-PTA2 | 16 | 65.4 | 200 | 207 | 5400*2500*3000 | 12000 |
| XHZM-SL1600GF | 2000 | 1600 | S16R-PTAA2 | 16 | 65.4 | 200 | 206 | 5900*2500*3500 | 14400 |
| XHZM-SL1800GF | 2250 | 1800 | S16R2-PTAW | 16 | 80 | 230 | 209 | 6000*2600*3500 | 17200 |

20/40HQ-STANDARD CONTAINER TYPE GENERATORS

It can be made to ISO standard container generator set, and can be shipped on board directly during transportation. 20HQ container is for power below 1000KVA, 40HQ container for power above 1250KVA. Widely used in some large factories or mines, data centers, medical facilities, communication base stations and other important places to provide temporary power guarantee, container generator sets can be used as the main or backup power source. With their flexible, reliable and efficient characteristics, they automatically start when the main power grid fails, ensuring the continuous operation of production equipment and avoiding production stagnation and economic losses caused by power outages.

Standard Container Type Features:

1. Can be shipped on board directly during transportation.
2. The interior of the shell is equipped with a powder coating and a mesh board with soundproof and fireproof cotton pasted inside, which is beautiful and rust proof, and can further reduce noise. The thickness of the soundproof cotton is 50mm, which has a good insulation effect
3. 5mm thick checkered steel plate floor is beautiful antiskid and is convenient for overhaul & maintenance of the unit.
4. Double emergency stop button set on different surfaces enables quick response to operation requirements.
5. The independent daily fuel tank can be designed to put inside to meet requirements of continuous operation.
6. The fuel filler is set on the shell to facilitate refueling.
7. The switch cabinet and control panel are respectively set on both sides of the shell for easy maintenance & operation.
8. Isolation net is designed for air inlet, exhaust outlet and muffler outlet to prevent objects from entering the unit.
9. There are electric louvers for air intake and exhaust, which can be Manual or automatic closed or opened—Optional
10. The sufficient air in & out design ensure long-term and stable operation of the unit .
11. The drainage outlets are all connected to the outside for easy operation.
12. The coolant, diesel and oil drains are connected to the outside of canopy for easy operation.
13. The top of the container is equipped with lighting for easy operation.



20' standard container type



40' standard container type

SILENT DIESEL GENERATORS

Silent type, also known as Soundproof Canopy, are enclosed in specially designed soundproof enclosures or cabinets to minimize noise levels while ensuring efficient power generation. Silent diesel generators are commonly used in various environments where noise reduction is required, such as residential areas, hospitals, commercial buildings, deal for posts and telecommunications, hotels, buildings, entertainment places, hospitals, shopping malls, industrial and mining enterprises and other places with noise-restriction areas.



MOBILE SILENT DIESEL GENERATORS

Mobile silent diesel generators are widely used in field mobile work. It is equipped with Trailer steering system, brake, tail lights, etc., fully meet the requirements of road driving. Our trailer-type generator sets are designed for scenarios that require efficient mobility and flexible use. Suitable for generator sets up to 500KVA, the trailer design allows the unit to be easily towed to different work sites, ensuring a worry-free power supply. Whether it is a construction site, temporary power needs or emergency power protection, trailer-type generator sets are the ideal choice.



SALES NETWORK

Solid and perfect service, make the company's marketing Network cover the whole country, Products are to overseas



Partial engineering cases



QUALITY ASSURANCE

National Provincial Long-Term Stationed Staff Closely Serve Customers.
 24*7-Hour Service Response System All Year Round.
 Arrive At Customer Site Within 48 Hours.
 Follow-Up And Track Service Status Within 24 Hours After Service Completion To Ensure Normal Product Usage By Customers.



7x24-hour annual service response system



Arrive at customer site within 48 hours



24-hour follow-up and tracking service