



WeChat



Whatsapp

DIANBIDA POWER EQUIPMENT (JIANGSU) CO., LTD.

Add: Nanhuan Eastroad, Majiazhuangdinghuo Town, Jiangdu district, yangzhou City. jiangsu Province. china

E-mail: dianbidapower@gmail.com

Phone: +86 138 5259 2015

Whatsapp: +86 38 5259 2015

Web: <https://www.dbddg.com/>



PROFESSIONAL MANUFACTURER OF ONE-STOP
POWER GENERATION EQUIPMENT

**DIANBIDA POWER
EQUIPMENT (JIANGSU) CO., LTD.**



COMPANY PROFILE

Dianbida Power Equipment (Jiangsu) Co., Ltd. is a leading professional manufacturer specializing in a comprehensive range of power generation solutions. Our core business encompasses the production and supply of both domestic and imported generator sets, including fully automatic, standard, and mobile power systems.

With a substantial registered capital of RMB 80 million and a significant manufacturing footprint spanning 24,000 square meters, we have established a robust foundation for industrial excellence. The company operates as an integrated enterprise, consolidating production, sales, and wholesale distribution to ensure stringent quality control, competitive pricing, and efficient service delivery.

Dedicated to reliability and innovation, Jiangsu Kaichen is committed to providing high-quality power equipment tailored to meet the diverse needs of our global clientele.

Quality Assured

Our commitment to quality is unwavering. We deliver durable and reliable products that ensure the safety and stability of your power systems.

Technical Excellence

Backed by a skilled engineering team and advanced manufacturing facilities, we provide innovative and technically superior solutions.

Customer-First Service

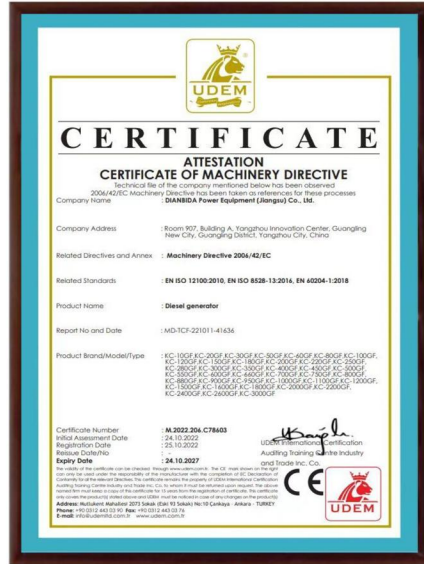
We pride ourselves on our responsive and flexible service. We work closely with you to provide customized support and timely delivery.

Global Competitiveness

We combine high-quality manufacturing with competitive pricing, offering outstanding value for projects worldwide.

PRODUCTION PLANT AREA





QUALIFICATION CERTIFICATE



Continuously improve management with "truth-seeking and innovation".
 Achieve overall satisfaction with "high quality and high efficiency".

Honor exists because of customers: because all our efforts are for customer satisfaction. Honor is affirmation, trust and encouragement, honor is our golden business card and pass, honor is our road signs and journeys. Honor represents the past, and the company regards honor as an inexhaustible driving force to motivate itself to continuously improve and make progress.

BRAND STRENGTH



Power Solution

20-4000 kVA

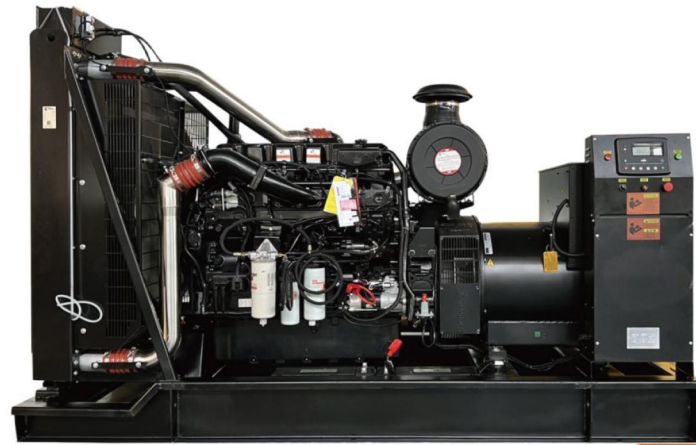


CUMMINS



Power range 20kVA~2000kVA

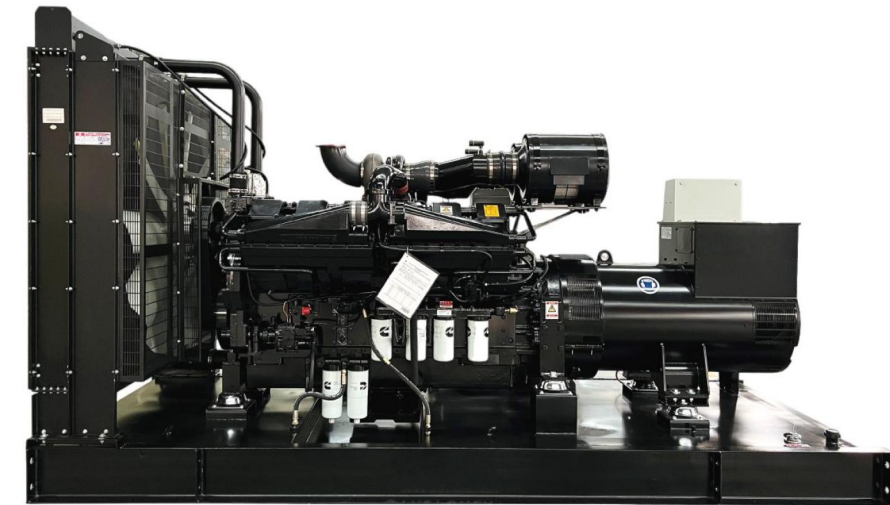
Adopting Cummins engines, offering cutting-edge design, dependable performance and long service life; Alloy steel crankshaft and connecting rod, ensuring high durability.



50Hz

CUMMINS diesel engine 3 phase 50HZ 400/230V

Genset Model	Standby Power		Prime Power		Engine Model	Displacement (L)	Fuel consumption (g/kw.h)	Open type L*W*H (mm)	Silent type L*W*H (mm)
	KVA	KW	KVA	KW					
DBD-25GF	30	24	27	22	4B3.9-G2	3.9	208	1800*850*1300	2200*1000*1500
DBD-40GF	44	35	40	32	4BT3.9-G2	3.9	208	1800*900*1400	2200*1000*1500
DBD-63GF	69	55	62.5	50	4BTA3.9-G2	3.9	208	1800*900*1400	2400*1000*1550
DBD-70GF	70	56	65	52	4BTA3.9-G2	3.9	208	1800*900*1400	2400*1000*1550
DBD-80GF	90	72	80	64	4BTA3.9-G11	3.9	210	1900*800*1400	2400*1000*1550
DBD-100GF	110	88	100	80	4BTA3.9-G13	3.9	210	1900*800*1400	2400*1000*1550
DBD-100GF	110	88	100	80	6BT5.9-G2	5.9	209	2200*900*1450	2800*1100*1700
DBD-113GF	125	100	113	90	6BT5.9-G2	5.9	210	2200*900*1450	2800*1100*1700
DBD-125GF	138	110	125	100	6BTA5.9-G2	5.9	209	2300*900*1450	3000*1100*1700
DBD-138GF	150	120	138	110	6BTA5.9-G2	5.9	206	2350*1000*1550	3000*1100*1700
DBD-160GF	175	140	160	128	6BTA5.9-G12	5.9	205	2500*1000*1550	3000*1100*1650
DBD-180GF	200	160	180	145	6CTA8.3-G2	8.3	209	2500*900*1560	3300*1300*1800
DBD-200GF	215	172	200	160	6CTAA8.3-G2	8.3	207	2600*900*1560	3300*1300*1800
DBD-250GF	264	211	250	200	6LTAA8.9-G2	8.9	206	2600*1000*1600	3600*1600*1900
DBD-250GF	275	220	250	200	6LTAA8.9-G3	8.9	206	2600*1000*1600	3600*1600*1900
DBD-270GF	300	240	270	220	6LTAA9.5-G3	9.5	209	2700*1100*1700	3800*1700*2000
DBD-275GF	313	250	275	220	NTA855-G1A	14	208	2600*1600*1500	4000*1700*2000
DBD-313GF	340	272	313	250	6LTAA9.5-G1	9.5	206	2700*1100*1700	3800*1700*2000
DBD-313GF*	340	272	313	250	NTA855-G1B	14	208	3000*1100*1700	4000*1700*2000
DBD-350GF	375	300	350	280	NTA855-G2A	14	207	3000*1100*1700	4000*1700*2000
DBD-400GF	388	310	350	280	NTA855-G4	14	209	3000*1100*1700	4000*1700*2000
DBD-380GF	425	340	388	310	6ZTAA13-G3	14	210	3000*1300*1700	4000*1800*2000
DBD-375GF	413	330	375	300	NTAA855-G7	14	209	3300*1250*1850	4000*1700*2000
DBD-400GF3	438	350	400	320	QSNT-G3	13	208	2900*1250*1900	4000*1700*2000
DBD-438GF	475	380	438	350	6ZTAA13-G4	13	210	3000*1300*1800	4000*1800*2000
DBD-500GF	513	410	500	400	QSZ13-G3	13	209	3100*1250*1850	4000*1800*2000
DBD-500GF*	550	440	500	400	QSZ13-G10	13	210	3300*1450*1900	4300*2000*2200
DBD-450GF	500	400	450	360	KTA19-G3	19	210	3400*1400*1900	4300*2000*2200
DBD-500GF	563	450	500	400	KTA19-G3A	19	209	3400*1400*2000	4300*2000*2200
DBD-500GF*	563	450	500	400	KTA19-G4	19	210	3400*1450*2000	4300*2000*2200
DBD-560GF	625	500	563	450	KTAA19-G5	19	208	3600*1460*2100	4700*2100*2450
DBD-700GF	688	550	/	/	KTAA19-G6A	19	211	3700*1500*2200	4700*2100*2450
DBD-725GF	800	640	725	580	KT38-GA	38	210	4450*1700*2360	6058*2438*2896
DBD-750GF	825	660	750	600	KTA38-G2	38	209	4450*1700*2360	6058*2438*2896
DBD-800GF	888	710	800	640	KTA38-G2B	38	208	4450*1700*2360	6058*2438*2896
DBD-900GF	1000	800	910	728	KTA38-G2A	38	208	4450*1700*2360	6058*2438*2896
DBD-1000GF	1100	880	1000	800	KTA38-G5	38	210	4400*1800*2400	6058*2438*2896
*DBD-1100GF	1250	1000	/	/	KTA38-G9	38	209	4800*1800*2500	6058*2438*2896
DBD-1250GF	1375	1100	1250	1000	KTA50-G3	50	208	5200*2000*2500	6058*2438*2896
DBD-1380GF	1650	1320	1375	1100	KTA50-G8	50	210	5900*2270*2500	12192*2438*2896
DBD-1500GF	1650	1320	1500	1200	KTA50-GS8	50	210	5900*2270*2500	12192*2438*2896
DBD-1680GF	1875	1500	1675	1340	KTA50-G15X	50	209	6200*2300*2550	12192*2438*2896
DBD-2000GF	2090	1650	2000	1600	KTA50-G16B	50	211	6200*2300*2550	12192*2438*2896



60Hz

CUMMINS diesel engine 3 phase 60HZ 220V~480V

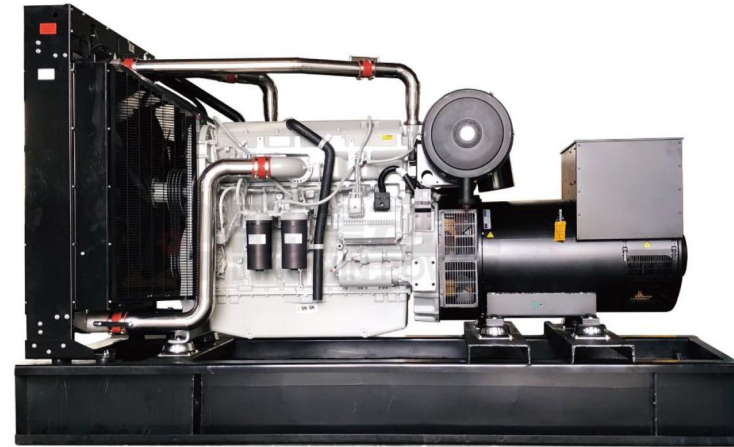
Genset Model	Standby Power		Prime Power		Engine Model	Displacement (L)	Fuel consumption (g/kw.h)	Open type L*W*H (mm)	Silent type L*W*H (mm)
	KVA	KW	KVA	KW					
DBD-25GF	28	22	25	20	4B3.9-G11	3.9	207	1900*800*1400	2200*1000*1500
DBD-30GF	35	28	30	25	4B3.9-G2	3.9	208	1800*850*1300	2200*1000*1500
DBD-35GF	38	30	35	28	4B3.9-G12	3.9	207	1800*900*1300	2200*1000*1500
DBD-45GF	50	40	45	36	4BT3.9-G2	3.9	206	1800*900*1400	2200*1000*1500
DBD-64GF	70	56	64	51	4BTA3.9-G2	3.9	205	1800*900*1400	2400*1000*1550
DBD-75GF	88	70	75	60	4BTA3.9-G2	3.9	206	1800*900*1400	2400*1000*1550
DBD-90GF	100	80	90	72	4BTA3.9-G11	3.9	205	1900*800*1400	2400*1000*1550
DBD-100GF	115	92	105	84	6BT5.9-G2	5.9	207	2200*900*1450	2800*1100*1700
DBD-125GF	138	110	125	100	*6BT5.9-G2	5.9	208	2200*900*1450	2800*1100*1700
DBD-130GF	145	116	131	105	6BTA5.9-G2	5.9	206	2300*900*1450	3000*1100*1700
DBD-150GF	165	130	150	120	6BTA5.9-G2	5.9	206	2350*1000*1550	3000*1100*1700
DBD-160GF	175	140	160	128	6BTA5.9-G12	5.9	207	2500*1000*1550	3000*1100*1700
DBD-190GF	209	167	190	152	6CTA8.3-G2	8.3	208	2500*900*1560	3300*1300*1800
DBD-210GF	230	184	210	168	6CTAA8.3-G2	8.3	207	2600*900*1560	3300*1300*1800
DBD-250GF	285	228	260	208	6LTAA8.9-G2	8.9	206	2600*1000*1600	3600*1600*1900
DBD-288GF	313	250	288	230	6LTAA8.9-G3	8.9	206	2600*1000*1600	3600*1600*1900
DBD-285GF	325	260	285	230	6LTAA9.5-G3	9.5	206	2700*1100*1700	3800*1700*2000
DBD-325GF	350	280	325	260	6LTAA9.5-G1	9.5	209	2700*1100*1700	3800*1700*2000
DBD-388GF	425	340	388	310	6ZTAA13-G3	14	208	2900*1200*1700	4000*1800*2000
DBD-438GF	475	380	438	350	6ZTAA13-G2	14	209	2900*1200*1700	4000*1800*2000
DBD-500GF	525	420	500	400	QSZ13-G3	13	208	3100*1250*1850	4000*1800*2000
DBD-560GF	625	500	560	450	QSZ13-G11	13	208	3100*1250*1850	4300*2000*2200
DBD-280GF	275	220	/	/	NT855-GA	14	208	2600*1600*1500	4000*1700*2000
DBD-350GF	350	280	313	250	NTA855-G1	14	207	3000*1100*1700	4000*1700*2000
DBD-380GF	375	300	350	280	NTA855-G1B	14	209	3000*1100*1700	4000*1700*2000
DBD-450GF	438	350	394	315	NTA855-G3	14	208	3000*1100*1700	4000*1700*2000
DBD-400GF3	438	350	400	320	QSNT-G3	13	208	2900*1250*1900	4000*1700*2000
DBD-500GF	550	450	500	410	KTA19-G3	19	209	3400*1400*1900	4700*2100*2450
DBD-560GF	625	500	563	450	KTA19-G3A	19	208	3400*1400*2000	4700*2100*2450
DBD-560GF*	625	500	563	450	KTA19-G4	19	207	3400*1450*2000	4700*2100*2450
DBD-625GF	688	550	588	470	KTAA19-G5	19	209	3580*1555*2150	4700*2100*2450
DBD-720GF	713	570	625	500	QSK19-G4	18.9	208	3800*1600*2200	4700*2100*2450
*DBD-750GF	750	600	/	/	KTAA19-G6A	19	210	3700*1500*2200	4700*2100*2450
DBD-688GF	750	600	688	550	QSK19-G5	19	207	3800*1550*2200	4700*2100*2450
DBD-775GF	844	680	775	620	KT38-G	38	208	4450*1700*2360	6058*2438*2896
DBD-875GF	963	770	875	700	KTA38-G1	38	206	4450*1700*2360	6058*2438*2896
DBD-900GF	1000	800	906	725	KTA38-G2	38	209	4450*1700*2360	6058*2438*2896
DBD-940GF	1038	830	938	750	KTA38-G2B	38	210	4450*1700*2360	6058*2438*2896
DBD-1000GF	1125	900	1000	800	KTA38-G2A	38	209	4450*1700*2360	6058*2438*2896
DBD-1100GF	1250	1000	1125	900	KTA38-G4	38	208	4400*1800*2400	6058*2438*2896
DBD-1100GF	1375	1100	/	/	KTA38-G9	38	210	4800*1800*2400	6058*2438*2896
DBD-1250GF	1438	1150	1200	960	QSK38-G5	38	208	4800*1800*2400	6058*2438*2896
DBD-1375GF	1563	1250	1375	1100	KTA50-G3	50	209	5200*2000*2500	6058*2438*2896
DBD-1375GF	1550	1240	1375	1100	QSK38-G4	38	211	5300*2000*2500	12192*2438*2896
DBD-1580GF	1875	1500	1575	1260	KTA50-G9	50	212	5900*2300*2500	12192*2438*2896

PERKINS



Power range 10kVA–2000kVA

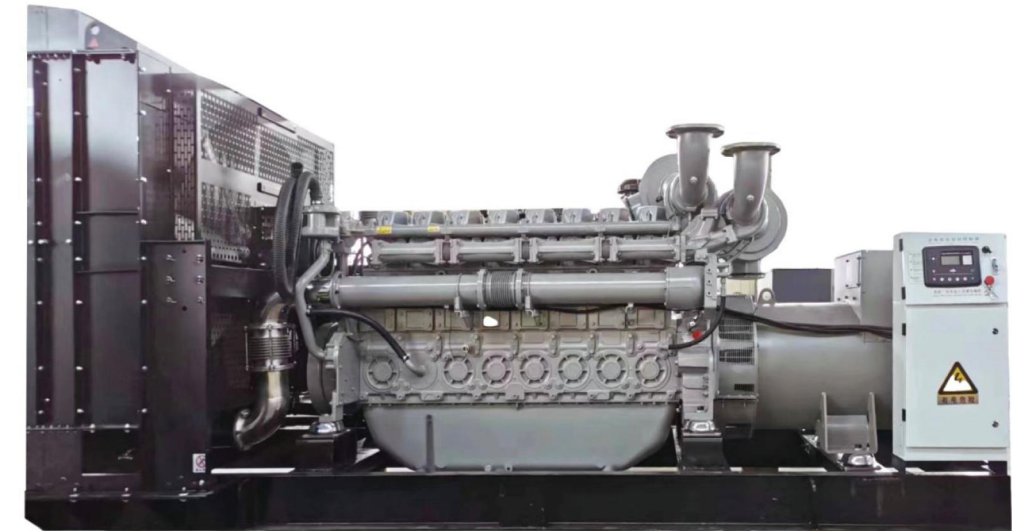
Adopting Perkins engines, featuring strong transient loading capacity, good maintainability and long service life.



50Hz

PERKINS diesel engine 3 phase 50HZ 400/230V

Genset Model	Standby Power		Prime Power		Engine type	Dimension Open type L*W*H (mm)	Weight (kg)
	KVA	KW	KVA	KW			
DBD-10GF	10	8	9	7	403A-11 G1	1350*500*1090	335
DBD-10GF*	10	8	9	7	403D-11G	1350*500*1090	335
DBD-15GF	14	11	13	10	403A-15G1	1430*500*1150	400
DBD-15GF*	14	11	13	10	403D-15G	1435*500*1150	415
DBD-20GF	16	13	15	12	403A-15G2	1435*500*1150	415
DBD-25GF	22	18	20	16	404A-22G1	1610*560*1195	525
DBD-25GF*	22	18	20	16	404D-22G	1610*560*1195	525
DBD-30GF	30	24	27	22	404D-22TG	1680*560*1195	550
DBD-35GF	32	26	30	24	1103A-33G	1840*700*1270	860
DBD-50GF	50	40	45	36	1103A-33TG1	1960*700*1350	870
DBD-70GF	66	53	60	48	1103A-33TG2	2050*700*1350	980
DBD-80GF	72	57	65	52	1104A-44TG1	2200*700*1350	1050
DBD-90GF	88	70	80	64	1104A-44TG2	2200*700*1350	1080
DBD-90GF*	88	70	80	64	1104C-44TAG1	2280*700*1350	1150
DBD-110GF	110	88	100	80	1104C-44TAG2	2280*700*1350	1250
DBD-150GF	150	120	135	108	1106A-70TG1	2565*850*1425	1522
DBD-170GF	165	132	150	120	1106A-70TAG2	2750*850*1350	1580
DBD-200GF	200	160	180	144	1106A-70TAG3	2850*850*1350	1590
DBD-220GF	220	176	200	160	1106A-70TAG4	2850*1045*1825	1600
DBD-260GF	254	203	231	185	1506A-E88TAG2	2980*1055*1695	2335
DBD-300GF	283	226	257	206	1506A-E88TAG3	2980*1055*1695	2350
DBD-350GF	338	270	307	246	1506A-E88TAG5	3080*1090*1700	2500
DBD-400GF	400	320	350	280	2206C-E13TAG2	3460*1150*2030	2980
DBD-450GF	450	360	400	320	2206C-E13TAG3	3460*1150*2030	3135
DBD-500GF	500	400	455	364	2506C-E15TAG1	3780*1270*2020	3760
DBD-550GF	550	440	500	400	2506C-E 15TAG2	3780*1270*2020	3880
DBD-650GF	650	520	591	473	2806C-E 18TAG1A	3780*1536*2180	4555
DBD-700GF	700	560	650	520	2806A-E18TAG2	3780*1536*2180	4600
DBD-900GF	820	656	746	597	4006-23TAG2A	4250*1690*2150	6460
DBD-900GF	880	704	800	640	4006-23TAG3A	4250*1690*2150	6500
DBD-1000GF	1000	800	910	728	4008TAG1A	4735*2261*2256	7400
DBD-1200GF	1125	900	1022	818	4008TAG2A	4735*2261*2256	7450
DBD-1200GF*	1125	900	1022	818	4008TAG2	4735*2261*2256	7450
DBD-1250GF	1250	1000	1125	900	4008-30TAG3	4735*2261*2256	7450
DBD-1400GF	1375	1100	1250	1000	4012-46TWG2A	4800*2100*2297	9030
DBD-1400GF*	1375	1100	1250	1000	4012-46TWG2	4800*2100*2297	9050
DBD-1500GF	1500	1200	1375	1100	4012-46TWG3A	4800*2100*2297	9100
DBD-1700GF	1650	1320	1500	1200	4012-46TAG2A	4900*2100*2297	9730
DBD-1900GF	1850	1480	1688	1350	4012-46TAG3A	4900*2100*2297	9730
DBD-2000GF	2000	1600	1850	1480	4016TAG1A	5035*2597*2150	10300
DBD-2200GF	2200	1760	2000	1600	4016TAG2A	5035*2597*2150	10300
DBD-2200GF	2200	1760	2000	1600	4016-61TRG2	5250*2600*2150	10270
DBD-2500GF	2500	2000	2250	1800	4016-61TRG3	5250*2600*2150	11000



60Hz

PERKINS diesel engine 3 phase 60HZ 220V~480V

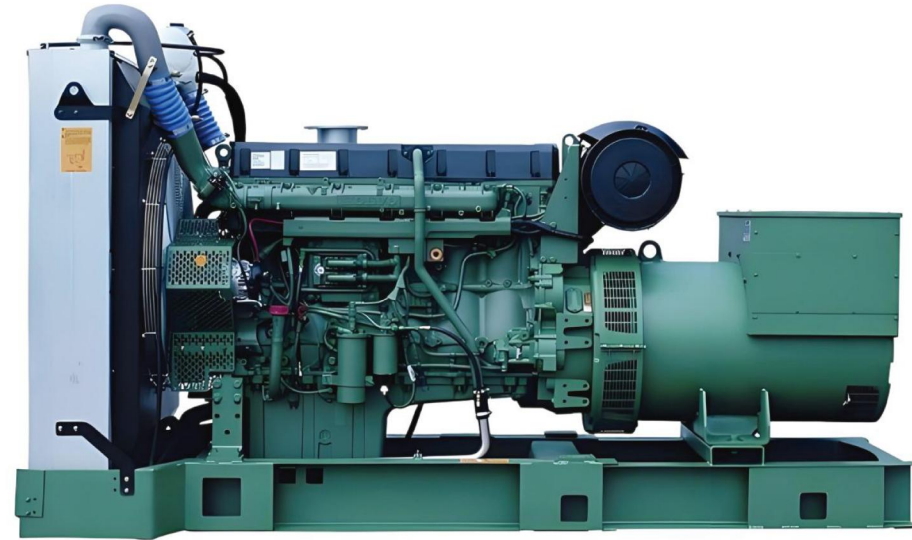
Genset Model	Standby Power		Prime Power		Engine type	Dimension Open type L*W*H (mm)	Weight (kg)
	KVA	KW	KVA	KW			
DBD-15GF	13	10	11	9	403D-11G	1350*500*1090	335
DBD-20GF	16	13	15	12	403D-15G	1435*500*1150	415
DBD-20GF*	19	15	17	14	403A-15G2	1435*500*1150	415
DBD-30GF	26	21	24	19	404D-22G	1610*560*1195	525
DBD-35GF	35	29	33	26	404D-22TG	1610*560*1195	525
DBD-40GF	38	30	35	28	1103A-33G	1840*700*1270	860
DBD-60GF	59	47	54	43	1103A-33TG1	1960*700*1350	870
DBD-80GF	75	60	68	55	1103A-33TG2	2050*700*1350	980
DBD-90GF	84	67	76	61	1104A-44TG1	2200*700*1350	1050
DBD-100GF	100	80	90	73	1104A-44TG2	2200*700*1350	1080
DBD-100GF*	100	80	90	72	1104C-44TAG1	2280*700*1350	1150
DBD-130GF	125	100	115	92	1104C-44TAG2	2280*700*1350	1250
DBD-170GF	169	135	152	122	1106A-70TG1	2565*850*1425	1522
DBD-200GF	188	150	169	135	1106A-70TAG2	2750*850*1350	1580
DBD-220GF	219	175	197	158	1106A-70TAG3	2850*850*1350	1590
DBD-280GF	273	218	248	198	1506A-E88TAG2	2980*1055*1695	2335
DBD-320GF	320	256	290	232	1506A-E88TAG3	2980*1055*1695	2350
DBD-400GF	390	312	352	282	1506A-E88TAG5	3080*1090*1700	2500
DBD-440GF	438	350	400	320	2206C-E13TAG2	3460*1150*2030	2980
DBD-440GF*	438	350	400	320	2206C-E13TAG3	3460*1150*2030	3135
DBD-580GF	563	450	500	400	2506C-E15TAG1	3780*1270*2020	3760
DBD-580GF*	563	450	500	400	2506C-E 15TAG2	3780*1270*2020	3880
DBD-700GF	687	550	625	500	2806C-E 18TAG 1A	3780*1536*2180	4555
DBD-700GF*	687	550	625	500	2806A-E18TAG2	3780*1536*2180	4555
DBD-830GF	825	660	750	600	4006-23TAG2A	4250*1690*2150	6460
DBD-950GF	940	750	849	679	4006-23TAG3A	4250*1690*2150	6500
DBD-1100GF	1100	880	1000	800	4008TAG2	4735*2261*2256	7450
DBD-1375GF	1375	1100	1250	1000	4012-46TWG2A	4800*2100*2297	9030
DBD-1500GF	1500	1200	1375	1100	4012-46TWG3A	4800*2100*2297	9100
DBD-1650GF	1650	1320	1500	1200	4012-46TAG2A	4900*2100*2297	9730
DBD-1850GF	1850	1480	1690	1350	4012-46TAG3A	4900*2100*2297	9730

VOLVO

VOLVO PENTA

Power range 85kVA–700kVA

While its core activity is the production, distribution and sale of trucks, buses and construction equipment, Volvo also supplies marine and industrial drive systems and financial services. In 2016, it was the world's second largest manufacturer of heavy-duty trucks.



50Hz

VOLVO diesel engine 3 phase 50HZ 400/230V

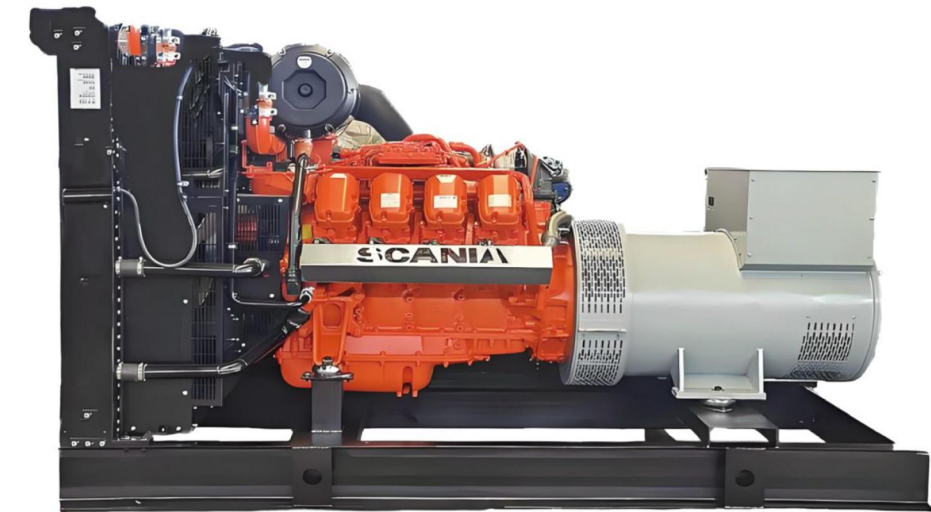
Genset Model	Standby Power		Prime Power		Engine Model	DSPL (L)	Lubricant capacity (L)	Fuel Consumption (L/h)	Gov.	Dimension L*W*H (mm)
	KVA	KW	KVA	KW						
DBD-95GF	94	75	85	68	TAD530GE	4.76	13	19.1	ECU	2200*800*1500
DBD-140GF	138	100	125	100	TAD531GE	4.76	13	22.5	ECU	2200*900*1500
DBD-155GF	155	123	140	112	TAD532GE	4.76	13	28.4	ECU	2300*900*1500
DBD-175GF	173	138	156	125	TAD731GE	7.15	20	33.9	ECU	2300*900*1500
DBD-210GF	206	165	188	150	TAD732GE	7.15	34	39.8	ECU	2400*900*1500
DBD-220GF	220	176	200	160	TAD733GE	7.15	34	44.7	ECU	2400*900*1500
DBD-280GF	275	220	250	200	TAD734GE	7.15	29	52.6	EMS 2	2500*1000*1550
DBD-350GF	345	275	313	250	TAD1341GE	12.78	36	61.8	EMS 2	2600*1000*1600
DBD-400GF	385	308	350	280	TAD1342GE	12.78	36	68.1	EMS 2	2700*1100*1600
DBD-420GF	413	330	375	300	TAD1342GE	12.78	36	68.1	EMS 2	2800*1100*1600
DBD-450GF	440	352	400	320	TAD1343GE	12.78	36	73.4	EMS 2	2900*1200*1600
DBD-500GF	500	400	450	360	TAD1344GE	12.78	36	80.8	EMS 2	2900*1100*1600
DBD-550GF	550	440	500	400	TAD1345GE	12.78	36	89.5	EMS 2	3000*1200*1700
DBD-630GF	625	500	563	450	TAD1641GE	16.12	48	100.6	EMS 2	3100*1200*1700
DBD-700GF	700	550	625	500	TAD1642GE	16.12	48	117.2	EMS 2	3200*1300*1800
DBD-760GF	756	605	688	550	TWD1643GE	16.12	48	125.5	EMS 2	3300*1400*1800

SCANIA



Power range 85kVA–700kVA

Scania Group is one of the world's leading manufacturers of heavy-duty trucks, large buses, and industrial and marine engines. In addition, the company also provides a wide range of service products to ensure that customers enjoy the best cost transportation solutions and the highest attendance rates. Scania is headquartered in Sweden and operates in over 100 countries and regions worldwide, with approximately 32000 employees worldwide.



50Hz

SCANIA diesel engine 3 phase 50HZ 400/230V

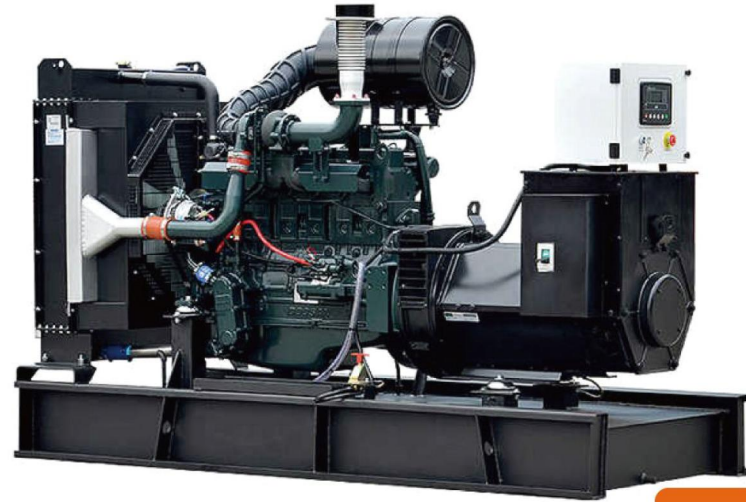
Genset's model	Engine model	Engine power		Number of vat	Bore stroke ratio (mm)	Displacement (L)	Fuel consumption (g/kw.h)	Overall size L x W x H (mm)	Weight (kg)	Output power	
		KW	KVA							KW	KVA
DBD-249GF	DC09 072A 02-11	249	311.25	5	130*140	9.3	196	2730*1270*1795	2185	200	250
DBD-294GF	DC09 072A 02-13	294	367.5	5	130*140	9.3	196	2840*1270*1795	2360	240	300
DBD-317GF	DC09 072A 02-14	317	396.25	5	130*140	9.3	196	2840*1270*1795	2400	260	325
DBD-356GF	DC13 073A 02-21	356	445	6	130*160	12.7	198	3200*1270*1940	2860	300	375
DBD-399GF	DC12 59A 10-33A	399	498.75	6	130*160	12.7	198	3200*1270*1940	2860	330	412.5
DBD-438GF	DC13 073A 02-23	438	547.5	6	130*160	12.7	198	3280*1270*1940	2900	360	450
DBD-480GF	DC13 073A 02-24	480	600	6	130*160	12.7	198	3265*1270*1940	3000	400	500
DBD-481GF	DC16 45A 10-30A	481	601.25	8	127*154	15.6	198	3265*1270*1930	3120	400	500
DBD-545GF	DC16 44A 10-27A	545	681.25	8	127*154	15.6	198	3265*1270*1940	3220	440	550
DBD-554GF	DC16 44A 10-27A	554	692.5	8	127*154	15.6	198	3265*1270*1940	3420	440	550

DOOSAN



Power range 10VA–1200kVA

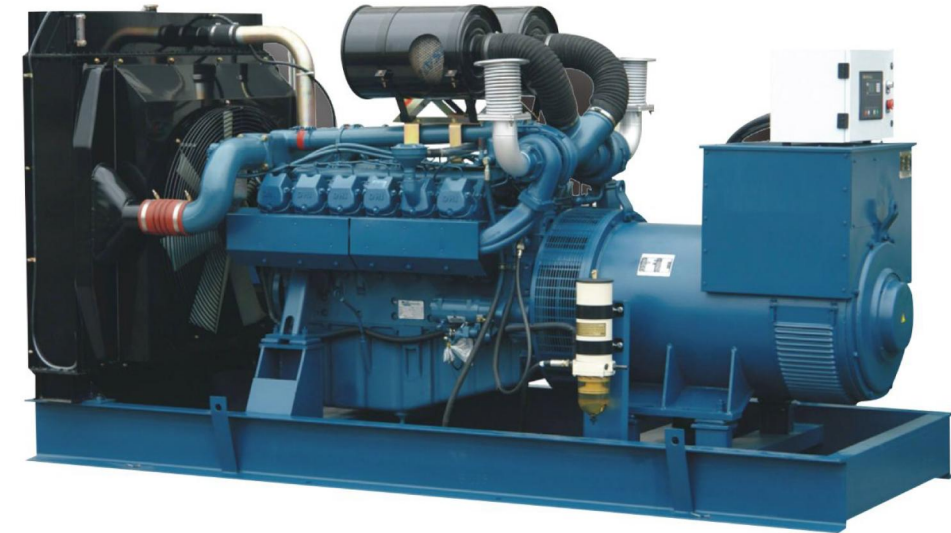
DOOSAN located in Korea first started producing diesel engines in 1958. The products have a high cost performance with the power range from 10VA–1200kVA, meet the domestic and international standards like GB/T2820, GB1105, YD/T502, SO8525–3, ISO3046, ISO8525 and US EPA and CARB emission standards.



50Hz

DOOSAN diesel engine 3 phase 50HZ 400/230V

Genset Model	Standby Power		Prime Power		Engine type	Dimension Open type L*W*H (mm)
	KVA	KW	KVA	KW		
DBD-10GF	8	6	7	5	SP103NA	1500*750*1030
DBD-15GF	15	12	14	11	SP173NA	1500*750*1030
DBD-20GF	20	15	18	14	SP224NA	1500*750*1030
DBD-30GF	28	22	25	20	SP244TA	1500*750*1030
DBD-40GF	41	33	38	30	SP244CA	1700*750*1150
DBD-55GF	55	44	50	40	SP344CA	1850*800*1180
DBD-70GF	70	55	63	50	SP344CB	1850*800*1180
DBD-90GF	90	72	81	65	SP344CC	1850*800*1180
DBD-95GF	91	73	83	66	D1146	1900*800*1250
DBD-130GF	131	105	119	95	D1146T	2250*880*1300
DBD-165GF	165	132	150	120	DP086TA	2650*1000*1800
DBD-190GF	186	149	169	135	P086TI-1	2650*1000*1800
DBD-220GF	220	176	200	160	P086TI	2650*1000*1800
DBD-220GF	220	176	200	160	DP086LA	2650*1000*1800
DBD-300GF	303	242	275	220	P126TI	3100*1100*2000
DBD-330GF	330	264	300	240	P126TI-II	3100*1100*2000
DBD-415GF	415	330	375	300	DP126LB	3100*1100*2000
DBD-2440GF	440	352	400	320	P158LE	3400*1350*2200
DBD-510GF	510	407	463	370	P158FE	3400*1350*2200
DBD-510GF*	510	407	463	370	DP158LC	3400*1350*2200
DBD-600GF	584	468	531	425	DP158LD	3400*1350*2200
DBD-630GF	633	506	575	460	DP180LA	3700*1700*2200
DBD-688GF	688	550	625	500	DP180LB	3700*1700*2200
DBD-688GF*	688	550	625	500	P180FE	3700*1700*2200
DBD-760GF	756	605	688	550	P222FE	3700*1700*2200
DBD-760GF*	756	605	688	550	DP222LB	3700*1700*2200
DBD-825GF	825	660	750	600	DP222LC	3700*1700*2200
DBD-825GF*	825	660	750	630	DP222LP	3700*1700*2200
DBD-840GF	840	671	763	610	DP222CA	3700*1700*2200
DBD-840GF*	840	671	763	610	DP222CA-2	3700*1700*2200
DBD-900GF	895	715	813	650	DP222CB-2	3700*1700*2200
DBD-900GF*	895	715	813	650	DP222CB	3700*1700*2200
DBD-1000GF	1004	803	913	730	DP222CC	3700*1700*2200
DBD-1000GF*	1004	803	913	730	DP222CC-2	3700*1700*2200



60Hz

DOOSAN diesel engine 3 phase 60HZ 220V~480V

Genset Model	Standby Power		Prime Power		Engine type	Dimension Open type L*W*H (mm)
	KVA	KW	KVA	KW		
DBD-10GF	10	8	9	7	SP103NE	1500*750*1050
DBD-10GF*	10	8	9	7	SP103NH	1500*750*1050
DBD-20GF	18	14	16	13	SP173NC	1500*750*1050
DBD-20GF*	18	14	16	13	SP173ND	1500*750*1050
DBD-30GF	26	21	24	19	SP224NC	1500*750*1050
DBD-30GF*	26	21	24	19	SP183CA	1500*750*1050
DBD-35GF	33	26	30	24	SP244TC	1500*750*1050
DBD-50GF	50	40	44	35	SP244CA	1700*750*1150
DBD-70GF	70	55	63	50	SP344CA	1850*800*1180
DBD-75GF	72	57	65	52	SP344CA	1850*800*1180
DBD-80GF	80	64	73	58	SP344CB	1850*800*1180
DBD-100GF	102	81	93	74	SP344CC	1850*800*1180
DBD-110GF	110	88	100	80	D1146	1900*800*1250
DBD-150GF	150	120	136	109	D1146T	2250*880*1300
DBD-200GF	206	165	188	150	DP086TA	2650*1000*1800
DBD-210GF	210	167	190	152	P086TI-1	2650*1000*1800
DBD-240GF	241	193	219	175	P086TI	2650*1000*1800
DBD-240GF*	241	193	219	175	DP086LA	2650*1000*1800
DBD-345GF	345	275	313	250	P126TI	3100*1100*2000
DBD-380GF*	380	303	345	275	P126TI-II	3100*1100*2000
DBD-455GF	454	363	413	330	DP126LB	3100*1100*2000
DBD-500GF	500	400	450	360	P158LE	3400*1350*2200
DBD-540GF	536	429	488	390	P158FE	3400*1350*2200
DBD-580GF	580	462	525	420	DP158LC	3400*1350*2200
DBD-605GF	605	484	550	440	DP158LD	3400*1350*2200
DBD-700GF	693	554	630	504	DP180LA	3700*1700*2200
DBD-700GF*	693	554	630	504	P180FE	3700*1700*2200
DBD-750GF	745	595	675	540	DP180LB	3700*1700*2200
DBD-825GF	825	660	750	600	P222FE	3700*1700*2200
DBD-825GF*	825	660	750	600	DP222LA	3700*1700*2200
DBD-880GF	880	704	800	640	DP222LB	3700*1700*2200
DBD-935F	935	748	850	680	DP222LC	4400*2000*2250
DBD-950GF	950	760	863	690	DP222CA	3700*1700*2200
DBD-950GF*	950	760	863	690	DP222CA-2	3700*1700*2200
DBD-1020GF	1018	814	925	740	DP222CB-2	3700*1700*2200
DBD-1020GF*	1018	814	925	740	DP222CB	3700*1700*2200
DBD-1100GF	1100	880	1000	800	DP222CC	4400*2000*2250
DBD-1100GF*	1100	880	1000	800	DP222CC-2	4400*2000*2250

WEICHAI



Power range 20kVA-4000kVA

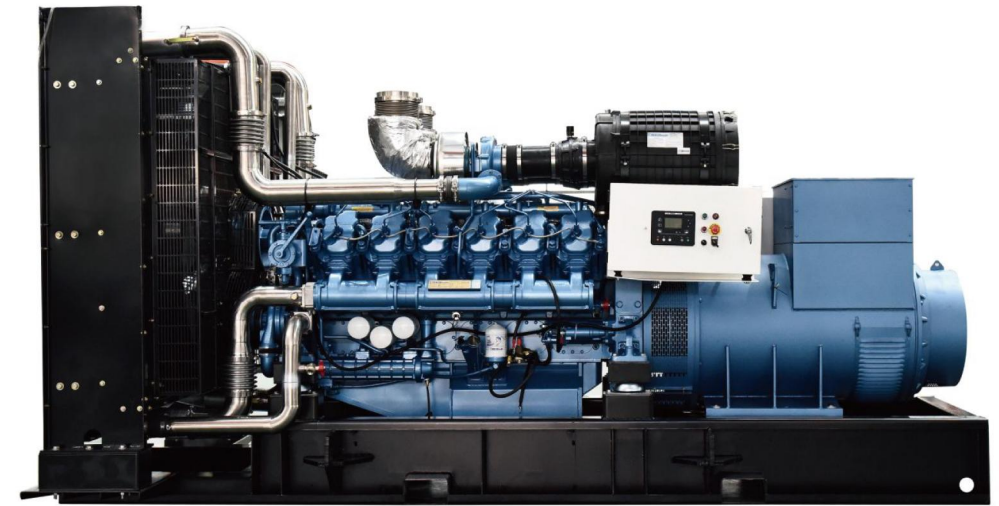
The engine adopts core technology independently developed by Weichai and has an output power range (20kva-4000kva) to meet the power demand in multiple scenarios.



50Hz

WEICHAI diesel engine 3 phase 50HZ 400/230V

Genset Model	Standby Power		Prime Power		Engine Model	Displacement (L)	Fuel consumption (g/kw.h)	Dimension L*W*H (mm)	Weight (kg)
	KVA	KW	KVA	KW					
DBD-20GF	23	18	20	16	WP2.3D25E200	2.3L	≤225	1400*800*1100	720
DBD-30GF	33	26	30	24	WP2.3D33E200	2.3L	≤225	1400*800*1100	720
DBD-38GF	41	33	38	30	WP2.3D40E200	2.3L	≤225	1450*800*1200	790
DBD-40GF	50	40	45	36	WP2.3D48E200	2.3L	≤220	1600*800*1200	800
DBD-60GF	69	55	63	50	WP4.1D66E200	4.1L	≤235	1700*800*1200	920
DBD-80GF	88	70	80	64	WP4.1D80E200	4.1L	≤235	2200*900*1300	1000
DBD-100GF	125	100	100	80	WP4.1D113E200	4.1L	≤235	2200*900*1300	1000
DBD-125GF	150	120	125	100	WP6D132E200	6L	≤205	2200*900*1300	1500
DBD-150GF	165	132	150	120	WP6D152E200	6L	≤205	2200*900*1500	1500
DBD-175GF	188	150	175	140	WP6D167E200	6L	≤215	2400*900*1500	1500
DBD-200GF	220	176	200	160	WP10D200E200	10L	≤215	2400*900*1500	1500
DBD-230GF	250	200	230	184	WP10D238E200	10L	≤215	2400*900*1500	1500
DBD-250GF	275	220	250	200	WP10D264E200	10L	≤215	2550*1000*1500	1800
DBD-313GF	350	280	313	250	WP10D320E200	10L	≤205	2700*1100*1800	2500
DBD-375GF	400	320	375	300	WP13D385E200	13L	≤210	3000*1100*1800	2700
DBD-400GF	440	352	400	320	WP13D405E200	13L	≤215	3100*1100*1800	3000
DBD-450GF	500	400	450	360	WP13D440E310	13L	≤215	3100*1100*1800	3500
DBD-500GF	550	440	500	400	WP13D490E310	13L	≤215	3200*1300*1800	3800
DBD-650GF	725	580	650	520	6M33D633E200	19	≤213	3700*1600*2250	4600
DBD-650GF*	725	580	650	520	6M33D633E310	19	≤217	3700*1600*2250	3600
DBD-675GF	750	600	675	540	6M33D670E200	19	≤215	3700*1600*2250	5500
DBD-750GF	825	660	750	600	12M26D748E200	31	≤214	3700*1600*2250	6000
DBD-800GF	900	720	800	640	8M33D800E200	26	≤210	3800*1800*2250	6100
DBD-900GF	1000	800	900	720	8M33D890E200	26	≤210	3800*1800*2250	6100
DBD-800GF	875	700	800	640	12M26D792E200	31	≤216	4600*1800*2300	6200
DBD-900GF	1000	800	900	720	12M26D902E200	31	≤215	4600*1900*2300	7500
DBD-1000GF	1100	880	1000	800	12M26D968E200	31	≤215	5300*2200*2500	7550
DBD-1000GF	1100	880	1000	800	12M33D968E310	39	≤216	5300*2200*2500	7550
DBD-1125GF	1250	1000	1125	900	12M33D1108E200	39	≤214	5400*2250*2600	9800
DBD-1250GF	1375	1100	1250	1000	12M33D1210E200	39	≤213	5400*2250*2600	9800
DBD-1375GF	1500	1200	1375	1100	12M33D1320E200	39	≤210	5400*2250*2600	9800
DBD-1000GF	1100	880	1000	800	12M33D968E310	39	≤216	5300*2200*2500	7550
DBD-1125GF	1250	1000	1125	900	12M33D1108E310	39	≤215	5400*2250*2500	9800
DBD-1250GF	1375	1100	1250	1000	12M33D1240E310	39	≤215	5400*2250*2500	9800
DBD-1375GF	1500	1200	1375	1100	12M33D1320E310	39	≤217	5400*2250*2500	9800
DBD-1560GF	1750	1400	1563	1250	16M33D1530E310	52	≤215	6200*2150*2500	13000
DBD-1690GF	1856	1485	1688	1350	16M33D1580E310	52	≤216	6300*2150*2500	13000
DBD-1750GF	1900	1520	1750	1400	16M33D1680E310	52	≤210	6300*2150*2500	13500
DBD-1875GF	2063	1650	1875	1500	16M33D1800E310	52	≤216	6400*2210*2500	13200
DBD-1875GF	2063	1650	1875	1500	12M55D1870E310	39	≤215	6520*2210*2500	13200
DBD-2000GF	2200	1760	2000	1600	12M55D2020E310	39	≤215	6520*2210*2500	13800
DBD-2250GF	2475	1980	2250	1800	12M55D2200E310	39	≤210	6620*2210*2500	14000
DBD-2500GF	2750	2200	2500	2000	12M55D2450E310	39	≤216	7000*2400*2600	22000



60Hz

WEICHAI diesel engine 3 phase 60HZ 220V~480V

Genset Model	Standby Power		Prime Power		Engine Model	Displacement (L)	Fuel consumption (g/kw.h)	Open type L*W*H (mm)	Weight (kg)
	KVA	KW	KVA	KW					
DBD-25GF	30	24	25	20	WP2.3D30E201	2.3	≤210	1500*750*1050	350
DBD-38GF	41	33	38	30	WP2.3D41E201	2.3	≤216	1500*750*1050	400
DBD-44GF	50	40	44	35	WP2.3D47E201	2.3	≤215	1500*750*1050	500
DBD-50GF	63	50	50	40	WP2.3D58E201	2.3	≤215	1850*800*1100	700
DBD-75GF	83	66	75	60	WP4.1D80E201	4.1	≤210	1900*870*1180	1000
DBD-94GF	104	83	94	75	WP4.1D95E201	4.1	≤216	1900*870*1180	1100
DBD-110GF	125	100	113	90	WP4.1D115E201	4.1	≤215	2250*880*1250	1200
DBD-125GF	138	110	125	100	WP6D132E201	6	≤215	2400*950*1510	1250
DBD-150GF	165	132	150	120	WP6D158E201	6	≤210	2400*950*1510	1200
DBD-188GF	188	160	188	150	WP6D180E201	6	≤210	2400*950*1510	1500
DBD-188GF	206	165	188	150	WP10D200E201	10	≤216	2850*1040*1580	1550
DBD-225GF	250	200	225	180	WP10D238E201	10	≤215	2850*1040*1580	1500
DBD-250GF	280	220	250	200	WP10D264E201	10	≤215	3050*1100*1800	1800
DBD-375GF	400	320	375	300	WP10D360E201	10	≤210	2850*1040*1580	2500
DBD-375GF	413	330	375	300	WP13D385E201	13	≤210	3350*1150*1800	2700
DBD-500GF	575	460	500	400	WP13D510E311	13	≤216	3350*1150*1800	3000
DBD-563GF	625	500	563	450	6M33D572E201	19	≤210	3800*1600*2200	3800
DBD-650GF	725	580	650	520	6M33D633E201	19	≤216	3800*1600*2200	4100
DBD-688GF	750	600	688	550	6M33D670E201	19	≤215	4100*2000*2250	4300
DBD-725GF	800	640	725	580	6M33D710E201	19	≤210	3800*1600*2200	4500
DBD-750GF	825	660	750	600	6M33D740E311	19	≤216	3800*1600*2200	4700
DBD-800GF	875	700	800	640	8M33D800E311	26	≤210	3900*1800*2200	5200
DBD-800GF	1000	800	800	720	8M33D895E311	26	≤215	3900*1800*2200	5800
DBD-1000GF	1125	900	1000	800	8M33D1012E311	26	≤216	4000*1900*2200	6300
DBD-800GF*	875	700	800	640	12M26D792E201	31	≤215	4100*2000*2250	6400
DBD-900GF*	1000	800	900	720	12M26D902E201	31	≤210	4100*2000*2250	6700
DBD-1000GF	1100	900	1000	800	12M26D1012E201	31	≤216	4400*2000*2250	7500
DBD-1000GF*	1100	900	1000	800	12M33D1012E201	39	≤215	4700*2200*2400	7600
DBD-1125GF*	1250	1000	1125	900	12M33D1108E201	39	≤215	4700*2200*2400	8400
DBD-1250GF*	1375	1100	1250	1000	12M33D1265E201	39	≤210	4700*2200*2400	9100
DBD-1500GF	1650	1320	1500	1200	12M33D1320E201	39	≤215	4700*2200*2400	9500
DBD-1625GF	1800	1430	1625	1300	12M33D1420E201	39	≤215	4700*2200*2400	11000
DBD-1625GF	1800	1430	1625	1300	12M33D1420E201	39	≤210	4700*2200*2400	11500
DBD-1750GF	1925	1540	1750	1400	16M33D1680E311	52	≤215	5400*2250*2500	12000
DBD-1875GF	2065	1650	1875	1500	16M33D1785E311	52	≤210	5400*2250*2500	14000
DBD-2188GF	2400	1925	2188	1750	16M33D1920E311	52	≤216	5400*2250*2500	15000
DBD-2250GF	2475	1980	2250	1800	20M33D2230E311	65	≤215	5400*2250*2500	16000
DBD-2500GF	2750	2200	2500	2000	20M33D2460E311	65	≤210	7000*2400*2600	16500
DBD-2812GF	3125	2500	2812	2250	12M55D2700E311	65	≤218	7300*2400*2800	17000
DBD-3000GF	3300	2640	3000	2400	16M55D2960E311	87	≤218	7500*2700*3000	19000
DBD-3250GF	3500	2800	3250	2600	16M55D3150E311	87	≤218	7800*2700*3100	21000
DBD-3375GF	3750	3000	3375	2700	16M55D3350E311	87	≤218	8000*2800*3200	22000
DBD-3750GF	4125	3300	3750	3000	16M55D3600E311	87	≤218	8000*2800*3300	23000

SDEC



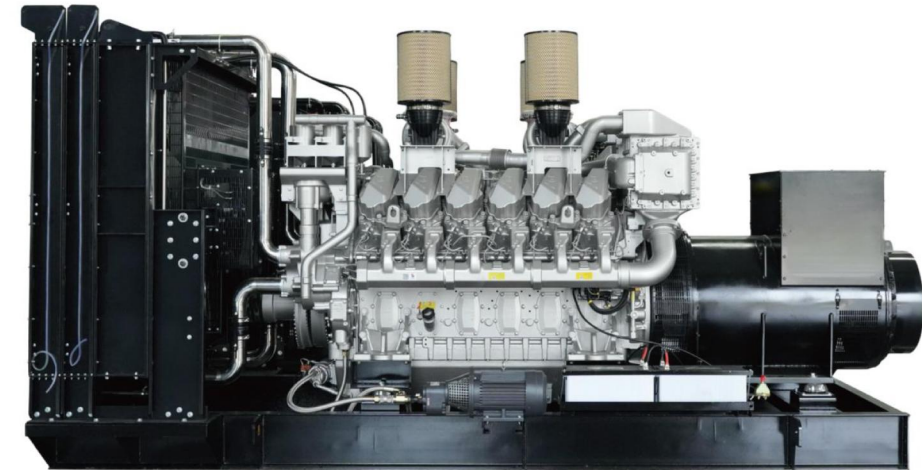
Power range 30kVA–2500kVA

The generator engine features modular design and standard accessories, and adopts high-strength cylinder body, four-valve structure, and precise electronic speed governor.

50Hz

SDEC diesel engine 3 phase 50HZ 400/230V

Genset Model	Standby Power		Prime Power		Engine Model	Displacement (L)	Fuel Consumption (L/h)	Dimension L*W*H (mm)
	KVA	KW	KVA	KW				
T3 emission								
DBD-25GF	28	22	25	20	4H4.3-G21	4.3	8.2	1800*820*1250
DBD-40GF	44	35	40	32	4H4.3-G22	4.3	11.5	1800*820*1250
DBD-50GF	55	44	50	40	4HT4.3-G21	4.3	12.8	1850*820*1300
DBD-80GF	88	70	80	64	4HT4.3-G23	4.3	19.5	1800*820*1300
DBD-105GF	116	92	105	84	4HTAA4.3-G21	4.3	23	2170*880*1400
DBD-125GF	135	108	125	100	4HTAA4.3-G22	4.3	28.3	2170*880*1600
DBD-138GF	151	121	138	110	6HTAA6.5-G21	6.5	30.5	2170*880*1400
DBD-150GF	161	129	150	120	6HTAA6.5-G22	6.5	33.1	2170*880*1400
DBD-188GF	202	162	188	150	6HTAA6.5-G23	6.5	39.7	2350*950*1600
DBD-200GF	220	176	200	160	6DTAA8.9-G21	8.82	44.1	2550*980*1600
DBD-250GF	275	220	250	200	6DTAA8.9-G22	8.82	52.7	2550*980*1650
DBD-250GF*	275	220	250	200	6DTAA8.9-G23	8.82	55.1	2550*980*1650
DBD-350GF	385	308	350	280	6ETAA11.8-G21	11.8	72.9	3150*1100*1850
DBD-400GF	438	350	400	320	6ETAA12.8-G32	12.8	100.3	3150*1100*1850
DBD-438GF	500	400	438	350	6ETAA12.8-G31	12.8	99.1	3150*1100*1850
DBD-350GF*	385	308	350	280	6ETAA11.8-G33	11.8	71.6	3150*1100*1850
DBD-375GF	413	330	375	300	6ETAA11.8-G31	11.8	79.3	3150*1100*1850
DBD-500GF	563	450	500	400	6ETAA12.8-G310	12.8	102.1	3600*1690*2120
DBD-500GF*	625	500	500	450	6KTAA25-G35	25.8	124	3550*1400*2000
DBD-625GF	688	550	625	500	6KTAA25-G34	25.8	140	3600*1690*2100
DBD-688GF	750	600	688	550	6KTAA25-G33	25.8	152	3900*1800*2200
DBD-750GF	825	660	750	600	6KTAA25-G32	25.8	163	3900*1800*2200
DBD-800GF	875	700	800	640	6KTAA25-G31	25.8	178	4200*1800*2200
DBD-900GF	1000	800	900	720	6WTAA35-G32	35.1	192	4300*1800*2300
DBD-1000GF	1100	880	1000	800	6WTAA35-G31	35.1	265	4300*1800*2300
DBD-1125GF	1250	1000	1125	900	6WTAA35-G310	35.1	240	4400*1800*2400
DBD-1250GF	1375	1100	1250	1000	6WTAA35-G311	35.1	265	4500*1900*2400
DBD-1375GF	1563	1250	1375	1100	12KTA58-G36	57.2	305	4500*1900*2400
DBD-1500GF	1688	1350	1500	1200	12KTA58-G35	57.2	339	4600*2000*2400
DBD-1688GF	1875	1500	1688	1350	12KTA58-G34	57.2	372	4700*1000*2400
DBD-1750GF*	1938	1550	1750	1400	12KTA58-G33	57.2	410	4800*2000*2400
DBD-1875GF	2000	1600	1875	1500	12KTA58-G32	57.2	441	4800*2000*2400
DBD-2125GF	2250	1800	2125	1700	12KTA58-G31	57.2	437	5000*2000*2400
T2 emission								
DBD-63GF	69	55	63	50	SC4H95D2	4.3	14.8	2000*850*1400
DBD-80GF	88	70	80	64	SC4H115D2	4.3	20.2	2000*800*1360
DBD-113GF	124	99	113	90	SC4H160D2	4.3	25	2000*920*1450



50Hz

SDEC diesel engine 3 phase 50HZ 400/230V

Genset Model	Standby Power		Prime Power		Engine Model	Displacement (L)	Fuel Consumption (L/h)	Dimension L*W*H (mm)
	KVA	KW	KVA	KW				
T2 emission								
DBD-125GF	135	108	125	100	SC4H180D2	4.3	28.6	2000*920*1435
DBD-169GF	186	149	169	135	SC7H230D2	6.44	36.5	2580*950*1600
DBD-188GF*	202	162	188	150	SC7H250D2	6.44	39.7	2500*990*1600
DBD-206GF	227	182	206	165	SC8D280D2	8.27	44.9	2600*1000*1750
DBD-225GF	248	198	225	180	SC9D310D2	8.82	50.4	2600*1000*1700
DBD-250GF	275	220	250	200	SC9D340D2	8.82	53.6	2600*950*1600
DBD-350GF	385	308	350	280	SC12E460D2	11.8	71.6	3200*1100*1750
DBD-375GF	413	330	375	300	SC15G500D2	14.16	81.2	3200*1250*1850
DBD-450GF	495	396	450	360	SC25G610D2	25.8	98	3550*1400*2000
DBD-500GF	550	440	500	400	SC25G690D2	25.8	111	3600*1700*2150
DBD-563GF	615	492	563	450	SC27G755D2	26.6	122.2	3550*1400*2000
DBD-625GF	680	544	625	500	SC27G830D2	26.6	141	3600*1700*2100
DBD-750GF	825	660	750	600	SC33W990D2	32.8	142.2	4400*1800*2300
DBD-900GF	990	792	900	720	SC33W1150D2	32.8	186.4	4400*1800*2300

60Hz

SDEC diesel engine 3 phase 60HZ 220V~480V

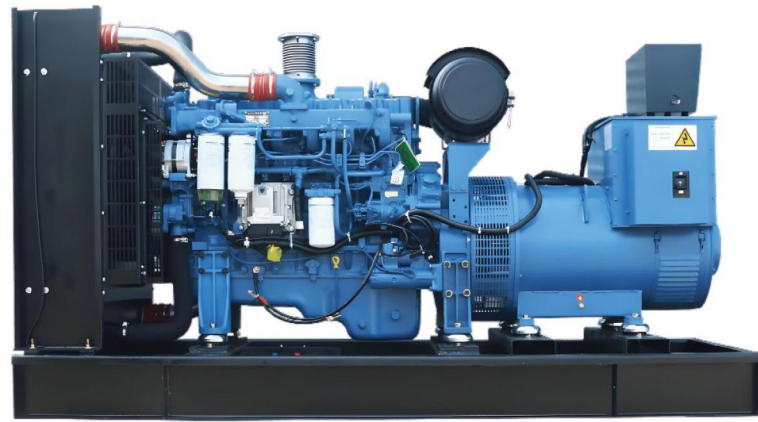
Genset Model	Standby Power		Prime Power		Engine Model	Displacement (L)	Fuel Consumption (L/h)	Dimension L*W*H (mm)
	KVA	KW	KVA	KW				
DBD-30GF	34	28	31	25	4H4.3-G21	4.3	9.5	1800*820*1247
DBD-50GF	55	44	50	40	4H4.3-G22	4.3	13.8	1800*820*1247
DBD-85GF	93	74	85	68	4HT4.3-G23	4.3	21.6	2170*880*1278
DBD-110GF	124	99	113	90	4HTAA4.3-G21	4.3	25.6	2170*880*1359
DBD-125GF	138	110	125	100	4HTAA4.3-G22	4.3	28.8	2170*880*1392
DBD-150GF	165	132	150	120	6HTAA6.5-G21	6.5	33.1	2170*880*1397
DBD-160GF	175	140	160	128	6HTAA6.5-G22	6.5	36.3	2170*880*1397
DBD-206GF	227	182	206	165	6HTAA6.5-G23	6.5	43.4	2350*950*1570
DBD-228GF	250	200	228	182	6DTAA8.9-G21	8.82	50.9	2550*980*1582
DBD-263GF	289	231	263	210	6DTAA8.9-G22	8.82	58.9	2550*980*1650
DBD-275GF	300	240	275	220	6DTAA8.9-G23	8.82	63	2550*980*1650
DBD-350GF	385	308	350	280	6ETAA11.8-G21	11.8	75.8	3150*1100*1825
DBD-368GF	405	323	368	294	6ETAA11.8-G31	11.8	79.5	3150*1100*1825

YUCHAI



Power range 30kVA-4000kVA

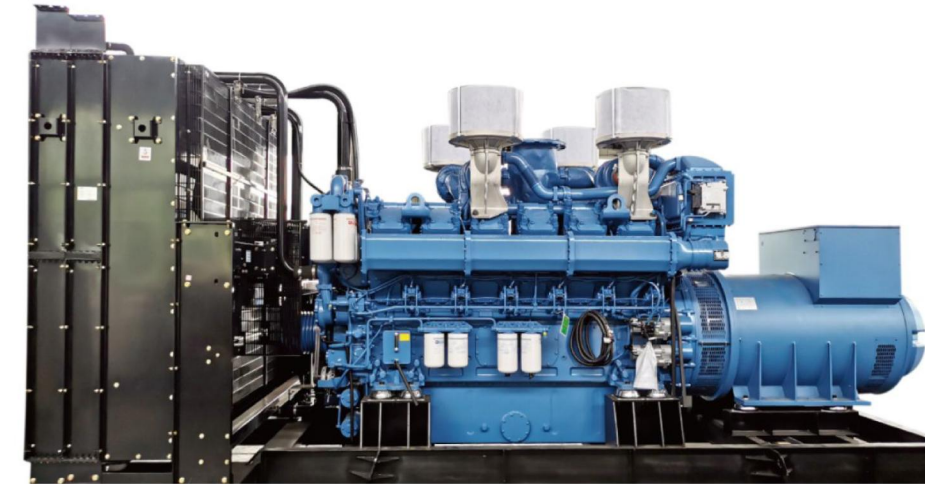
Adopting Yuchai engines, featuring strong transient loading capacity, good maintainability and long service life.



50Hz

YUCHAI diesel engine 3 phase 50HZ 400/230V

Genset Model	Standby Power		Prime Power		Engine Model	Cyl	DSPL (L)	Cons. (g/kw.h)	Dimension L*W*H (mm)	Weight (kg)
	KVA	KW	KVA	KW						
DBD-20GF	23	18	20	16	YC4V35-D20	4L	2.982	≤232	1700*650*1000	770
DBD-30GF	34	27	30	24	YC4V45Z-D20	4L	2.982	≤232	1700*650*1000	770
DBD-68GF	41	33	38	30	YC4V55Z-D20	4L	2.982	≤232	1700*700*1000	770
DBD-40GF	44	35	40	32	YC4D60-D25	4L	4.21	≤232	1800*700*1000	830
DBD-63GF	69	55	63	50	YC4D90Z-D25	4L	4.21	≤200	1900*750*1100	850
DBD-70GF	75	60	69	55	YC4A100Z-D20	6L	4.84	≤200	1900*750*1100	900
DBD-100GF	113	90	100	80	YC4A140L-D25	6L	6.871	≤200	2100*1100*1300	1100
DBD-125GF	138	110	125	100	YC4A180L-D20	6L	6.871	≤200	2200*1100*1400	1150
DBD-125GF*	150	120	125	100	YC6B180L-D20	6L	6.871	≤200	2200*1100*1400	1200
DBD-150GF	165	132	150	120	YC6B205L-D20	6L	6.871	≤230	2300*1100*1500	1250
DBD-175GF	193	154	175	140	YC6A230L-D20	6L	7.25	≤192	2400*1100*1500	1410
DBD-188GF	206	165	188	150	YC6A245L-D21	6L	7.25	≤192	2500*1100*1600	1430
DBD-250GF	275	220	250	200	YC6MK350L-D20	6L	10.34	≤195	2900*1100*1600	1600
DBD-313GF	344	275	313	250	YC6MK420L-D20	6L	10.34	≤195	3100*1100*1850	1600
DBD-350GF	388	310	350	280	YC6MK460L-D20	6L	11.75	≤195	3100*1100*1850	1900
DBD-375GF	400	320	375	300	YC6MK480L-D20	6L	11.75	≤195	3200*1200*1850	1900
DBD-375GF*	413	330	375	300	YC6MJ500-D21	6L	12.16	≤195	3250*1200*1600	1900
DBD-400GF	440	352	400	320	YC6MJ540-D30	6L	12.16	≤195	3250*1200*1700	2300
DBD-450GF	495	396	450	360	YC6MJ600-D30	6L	16.3	≤195	3450*1400*1800	3000
DBD-500GF	550	440	500	400	YC6T660L-D20	6L	16.3	≤195	3500*1400*1900	3600
DBD-563GF	625	500	563	450	YC6TD780-D31	6L	19.58	≤195	3500*1400*1900	3800
DBD-563GF*	625	500	563	450	YC6TD780-D30	6L	19.58	≤195	3500*1400*1900	3800
DBD-625GF	688	550	625	500	YC6TD840-D31	6L	19.58	≤195	3600*1400*1900	4400
DBD-625GF*	688	550	625	500	YC6TD840-D30	6L	19.58	≤195	3600*1400*1900	4400
DBD-688GF	750	600	688	550	YC6TD900-D31	6L	19.58	≤195	3600*1400*2200	4400
DBD-688GF*	750	605	688	550	YC6TD900-D30	6L	19.58	≤195	3600*1400*2200	4400
DBD-750GF	825	660	750	600	YC6TD1000-D31	6L	39.58	≤195	4100*1900*2200	6500
DBD-750GF*	825	660	750	600	YC6TD1000-D30	6L	39.58	≤195	4100*1900*2200	6500
DBD-800GF*	880	704	800	640	YC6TD1100-D30	6L	39.58	≤195	4200*2000*2200	6800
DBD-910GF	1000	800	913	730	YC6TH1220-D31	6L	39.58	≤195	4200*2000*2200	6800
DBD-1000GF	1125	900	1000	800	YC6TH1320-D31	6L	39.58	≤195	4200*2000*2200	7350
DBD-1125GF	1250	1000	1125	900	YC6C1520-D31	6L	39.58	≤195	4300*2000*2200	8700
DBD-1250GF	1375	1100	1250	1000	YC6C1660-D31	6L	39.58	≤195	4400*2000*2200	9000
DBD-1250GF*	1375	1100	1250	1000	YC6C1660-D30	6L	39.58	≤195	4400*2000*2200	9000
DBD-1000GF*	1125	900	1000	800	YC12VTD1350-D30	12V	79.17	≤195	4400*2000*2200	7300
DBD-1125GF*	1250	1000	1125	900	YC12VTD1500-D30	12V	79.17	≤195	4500*2000*2250	8100
DBD-1250GF**	1375	1100	1250	1000	YC12VTD1680-D30	12V	79.17	≤195	4600*2200*2450	9300
DBD-1375GF	1500	1200	1375	1100	YC12VTD1830-D30	12V	79.17	≤195	4600*2200*2450	9500
DBD-1500GF	1650	1320	1500	1200	YC12VTD2000-D30	12V	79.17	≤195	4600*2300*2450	10000
DBD-1688GF	1856	1485	1688	1350	YC16VTD2270-D30	16V	105.56	≤195	4700*2300*2450	11000
DBD-1875GF	2063	1650	1875	1500	YC16VTD2510-D30	16V	105.56	≤195	4800*2400*2500	12000
DBD-2000GF	2200	1760	2000	1600	YC16VTD2700-D30	16V	105.56	≤195	5300*2400*2600	14000
DBD-2250GF	2475	1980	2250	1800	YC16VC3000-D31	16V	105.56	≤203	5500*2500*2600	16000
DBD-2500GF	2750	2200	2500	2000	YC16VC3300-D31	16V	105.56	≤203	5800*2600*2700	18000
DBD-2750GF	3000	2400	2750	2200	YC16VC3600-D31	16V	105.56	≤203	6000*2700*2800	20000
DBD-3000GF	3250	2600	3000	2400	YC16VC4000-D31	16V	105.56	≤203	6100*2700*2800	20000
DBD-3125GF	3375	2700	3125	2500	YC16VC4200-D30	16V	105.56	≤203	6100*2700*2800	21000
DBD-3250GF	3500	2800	3250	2600	YC16VC4500-D30	16V	105.56	≤203	6200*2700*3000	22000
DBD-3500GF	3750	3000	3500	2800	YC16VC4900-D30	16V	105.56	≤203	6500*2700*3100	24000



60Hz

YUCHAI diesel engine 3 phase 60HZ 220V~480V

Genset Model	Standby Power		Prime Power		Engine Model	Cyl	Fuel cons. (g/kw.h)	Dimension L*W*H (mm)	Weight (kg)
	KVA	KW	KVA	KW					
DBD-20GF	25	20	23	18	YC4V35-D21	4L	≤232	1400*650*1000	400
DBD-30GF	35	28	31	25	YC4V45Z-D21	4L	≤232	1500*650*1000	450
DBD-38GF	41	33	38	30	YC4V55Z-D21	4L	≤232	1500*700*1000	470
DBD-44GF	50	40	44	35	YC4D65-D20	4L	≤232	1500*700*1000	600
DBD-56GF	63	50	56	45	YC4D80Z-D20	4L	≤200	1700*700*1000	650
DBD-70GF	75	60	69	55	YC4D100Z-D20	4L	≤200	1800*700*1000	800
DBD-88GF	100	80	88	70	YC6B130Z-D20	6L	≤200	1900*750*1100	900
DBD-90GF	106	85	94	75	YC4D140-D33	4L	≤200	1900*750*1100	1100
DBD-100GF	113	90	100	80	YC4D155-D33	4L	≤230	1900*750*1100	1100
DBD-100GF*	113	90	100	80	YC6B160Z-D20	6L	≤192	1900*750*1100	1150
DBD-113GF	125	100	113	90	YC4D180-D33	4L	≤192	2200*1100*1400	1100
DBD-150GF	165	132	150	120	YC4A205-D32	4L	≤195	2300*1100*1500	1300
DBD-150GF*	165	132	150	120	YC6B210L-D20	6L	≤195	2300*1100*1500	1300
DBD-188GF	200	160	188	150	YC6A245-D32	6L	≤195	2400*1100*1500	1400
DBD-188GF*	200	160	188	150	YC6A245L-D20	6L	≤195	2500*1100*1600	1400
DBD-200GF	220	176	200	160	YC6MK265Z-D20	6L	≤195	2900*1100*1600	1500
DBD-206GF	225	180	206	165	YC6A285-D32	6L	≤195	2300*1100*1500	1700
DBD-213GF	238	190	213	170	YC6A305-D32	6L	≤195	2400*1100*1500	1800
DBD-250GF	275	220	250	200	YC6MK360L-D20	6L	≤195	2500*1100*1600	2100
DBD-250GF*	275	220	250	200	YC6MK360-D30	6L	≤195	2900*1100*1600	2100
DBD-313GF	350	280	313	250	YC6MK420-D31	6L	≤195	3000*1200*1600	2400
DBD-313GF	350	280	313	250	YC6MK420L-D21	6L	≤195	3000*1200*1600	2500
DBD-375GF	400	320	375	300	YC6MJ515L-D22	6L	≤195	3200*1200*1600	2800
DBD-375GF*	400	320	375	300	YC6MK500-D32	6L	≤195	3500*1400*1900	2900
DBD-500GF	550	440	500	400	YC6T660L-D21	6L	≤195	3500*1400*1900	3500
DBD-575GF	650	520	575	460	YC6TD780-D32	6L	≤195	3600*1400*1900	4300
DBD-625GF	688	550	625	500	YC6TD840-D32	6L	≤195	3600*1400*2200	4700
DBD-650GF	713	570	650	520	YC6TD940-D32	6L	≤195	4100*1900*2200	5200
DBD-750GF	825	660	750	600	YC6TD1020-D32	6L	≤195	4200*2000*2200	5700
DBD-900GF	1000	800	900	720	YC6TH1070-D33	6L	≤195	4200*2000*2200	7100
DBD-900GF*	1000	800	900	720	YC6TH1220-D33	6L	≤195	4200*2000*2200	7100
DBD-1000GF	1100	880	1000	800	YC6TH1350-D33	6L	≤203	4300*2000*2200	7800
DBD-1250GF	1375	1100	1250	1000	YC12VTD1680-D33	12V	≤203	4400*2000*2200	9500
DBD-1375GF	1500	1200	1375	1100	YC12VTD1860-D33	12V	≤206	4600*2200*2450	9800
DBD-1500GF	1650	1320	1500	1200	YC12VTD2070-D33	12V	≤207	4600*2300*2450	11000
DBD-900GF	1000	800	900	720	YC12VTD1350-D32	12V	≤211	4200*2000*2200	11500
DBD-1125GF	1250	1000	1125	900	YC12VTD1500-D32	12V	≤215	4300*2000*2200	9500
DBD-1250GF	1375	1100	1250	1000	YC12VTD1680-D32	12V	≤212	4400*2000*2200	10500
DBD-1375GF	1500	1200	1375	1100	YC12VTD1860-D32	12V	≤216	4600*2200*2450	11000
DBD-1500GF	1650	1320	1500	1200	YC12VTD2070-D32	12V	≤219	4600*2300*2450	12000
DBD-1650GF	1813	1450	1650	1320	YC12VC2170-D33	12V	≤213	4700*2300*2450	12800
DBD-1750GF	1900	1520	1750	1400	YC16VTD2270-D32	16V	≤203	4800*2400*2500	14000
DBD-175GF	2063	1650	1875	1500	YC16VTD2510-D32	16V	≤207	5300*2400*2600	16000
DBD-2063GF	2250	1800	2063	1650	YC16VTD2700-D32	16V	≤209	5500*2500*2600	17000
DBD-2500GF	2750	2200	2500	2000	YC20VTD3300-D30	16V	≤208	5800*2600*2700	20000

CONTAINER UNIT



Standard Container Type Features:

- 1.Can be shipped on board directly during transportation.
- 2.The interior of the shell is equipped with a powder coating and a mesh. board with soundproof and fireproof cotton pasted inside, which is beautiful and rust proof, and can further reduce noise. The thickness of the soundproof cotton is 50mm, which has a good insulation effect
- 3.5mm thick checkered steel plate floor is beautiful antiskid and is convenient for overhaul & maintenance of the unit.
- 4.Double emergency stop button set on different surfaces enables quick response to operation requirements.
- 5.The independent daily fuel tank can be designed to put inside to meet requirements of continuous operation.
- 6.The fuel filler is set on the shell to facilitate refueling.
- 7.The switch cabinet and control panel are respectively set on both sides of the shell for easy maintenance& operation.
- 8.Isolation net is designed for air inlet, exhaust outlet and muffler outlet to prevent objects from entering the unit.
- 9.There are electric louvers for air intake and exhaust, which can be Manual or automatic closed or opened---Optional
- 10.The sufficient air in & out design ensure long-term and stable operation of the unit .
- 11.The drainage outlets are all connected to the outside for easy operation.
- 12.The coolant, diesel and oil drains are connected to the outside of canopy for easy operation.
- 13.The top of the container is equipped with lighting for easy operation.

SOUNDPROOF GENSET



The cabinet which is made of 3MM steel plate uses high-frequency.

Medium-frequency and low-frequency PUR-type flame-retardant, sound-absorbing sponge, which effectively reduces the noise. Dissipative muffler efficiently reduces the noise of exhaust port.

Reasonable air intake, air exhaust and cooling system not only allow the unit to exhaust heat sufficiently, but reduce noise without affecting unit power.

The cabinet has strong sealing performance, high waterproof and dustproof grade, easy to lift and transport, high safety performance, beautiful appearance and reasonable structure.

Traction: using mobile hook, 360° turntable, flexible steering, ensure the safety running.

Braking: at the same time with reliable ShouYaoShi brake system and brake interface, ensure the safety of driving.

Bolster: to ensure the stability of the power truck operation, with four only mechanical or hydraulic support device.

Doors&windows: the anterior have ventilated hind have outside the window, doors, two side door for operating personnel.

Lighting: the trunk inside suction a top lamp, right have workbench, and is equipped with work desk lamp, convenient job personnel.

Sound proof: power supply of car trunk, door to wait all use double decoration, and equipped with sound-absorbing board censored, themat axle, compact structure, safe and reliable.Exhaust propensities insulation cotton package, the lowest noise can be controlled in 72dB (A) within.

Fire-fighting: fire extinguishers accessory is equipped with two.

TRAILER-MOUNTED GENSET



Trailer type generator set falls into hand push, three-wheel, four-wheel, automobile power station, trailer power station, trailer silent, trailer container power station and power engineering vehicle. This type supplies power for short-distance and frequently-moving equipment, such as tunnel construction, road construction, etc.

Trailer generator set uses round steel pipe welded straight-through axle, and equips with leaf spring suspension structure. Four corners of the frame have support device and steering lights, taillights are standard. Movable hook traction and 180° turntable make the trailer Flexible steering. Trailer adopts height adjustable pin type drawing frame, applicable to all kinds of highly tractor, Using circular steel pipe welding mathemat axle, compact structure, safe and reliable.

Traction: using mobile hook, 360° turntable, flexible steering, ensure the safety running.

Braking: at the same time with reliable ShouYaoShi brake system and brake interface, ensure the safety of driving.

Bolster: to ensure the stability of the power truck operation, with four only mechanical or hydraulic support device.

Doors&windows: the anterior have ventilated hind have outside the window, doors, two side door for operating personnel.

Lighting: the trunk inside suction a top lamp, right have workbench, and is equipped with work desk lamp, convenient job personnel.

Sound proof: power supply of car trunk, door to wait all use double decoration, and equipped with sound-absorbing board censored, themat axle, compact structure, safe and reliable. Exhaust propensities insulation cotton package, the lowest noise can be controlled in 72dB (A) within.

Fire-fighting: fire extinguishers accessory is equipped with two.

MOBILE LIGHT TOWER



The generator set mobile lighthouse is a movable device that integrates power generation and lighting functions, mainly used for emergency power supply, temporary lighting, and large-scale work sites.

Application scenarios

Emergency rescue: Rapid deployment at disaster sites such as earthquakes and floods, providing electricity and lighting.

Engineering construction: places such as mines and construction sites that require temporary electricity and lighting.

Field operations: emergency rescue and disaster relief in industries such as petroleum and railway.

Features of the equipment

Mobility: Designed with wheels or tracks to adapt to complex terrains.

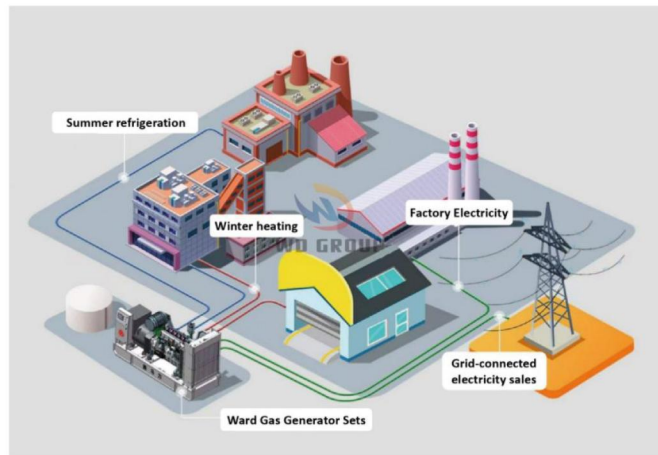
Intelligent control: Some models support functions such as remote lifting and fault alarm.

GAS FIRED GENERATOR SET



Gas generators make full use of various natural or harmful gases as fuel, turning waste into treasure, operating safely and conveniently, with high cost-effectiveness, low emissions and pollution, and suitable for cogeneration of heat and electricity. The market prospects are very broad. China has abundant natural gas resources, and compared to its abundant natural gas reserves, the proportion of natural gas in China's primary energy consumption appears to be too small, with great potential for significant improvement in the future. In China, due to the impact of natural gas supply, natural gas power generation is still in its initial stage. It will take time for large-scale natural gas power generation to become a distributed energy station. Small scale natural gas power generation is mainly carried out in oil and gas fields, as well as airports, hotels, hospitals, etc. It can be expected that with the increasing supply of natural gas and the continuous expansion of the supply range, natural gas power generation will experience rapid development in recent years.

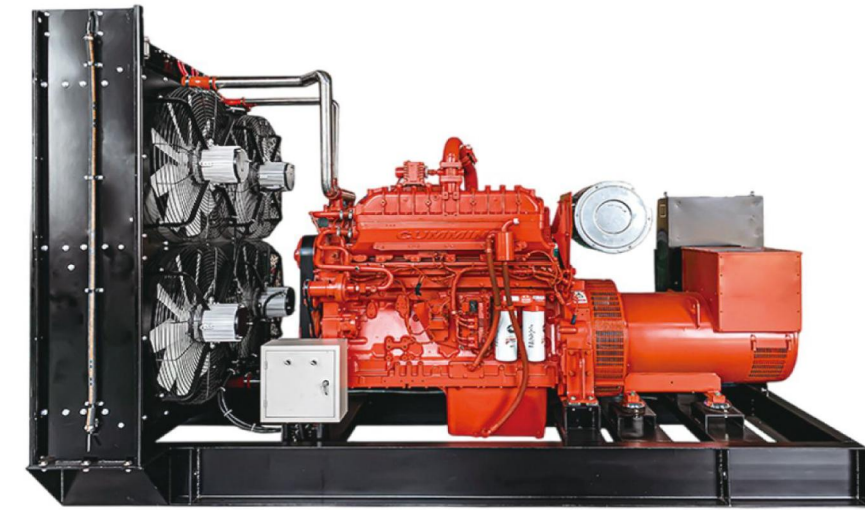
1. Good power generation quality
2. Good startup performance and high success rate
3. Low noise and low vibration
4. The combustible gas used is a clean and inexpensive energy source



CUMMINS



Advanced design and sophisticated manufacturing, adaptable to harsh working conditions, with strong capabilities for high-intensity and heavy-duty operations. Holset exhaust bypass valve has better power performance. The integrated design of cylinder blocks, cylinder heads, and other components allows for "one piece multi functionality", reducing the number of connecting parts by 40% compared to other similar engines, greatly reducing the failure rate.



Cummins series gas generator set

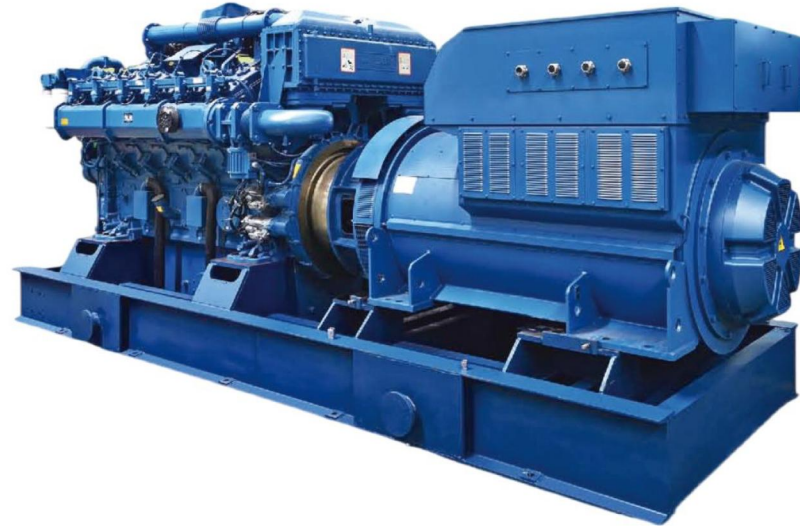
Genset's model	Rated Power (kW/KVA)	Standby Power (kW/KVA)	Rated Current (A)	Engine Model	Cylinder No.	Bore*Stroke (mm)	Gas consumption (m ³ /kW.h)		Dimension (L*W*H mm)	Weight (kg)
							Natural gas	Biogas		
DBD-30GF	30/37.5	33/41.25	54	4BT3.9-G1	4.L	102*120	0.33	0.55	1700*600*1400	800
DBD-40GF	40/50	44/55	72	4BT3.9-G2	4.L	102*120	0.33	0.55	1875*650*1400	850
DBD-50GF	50/62.5	55/68.75	90	4BTA3.9-G2	6.L	102*120	0.33	0.55	1900*700*1400	950
DBD-80GF	80/100	88/110	144	6BTA5.9-G2	6.L	102*120	0.33	0.55	2250*800*1500	1350
DBD-100GF	100/125	110/137.5	180	6BTAA5.9-G2	6.L	102*120	0.33	0.55	2250*800*1500	1420
DBD-120GF	120/150	132/165	216	6BTAA5.9-G12	6.L	102*120	0.33	0.55	2300*900*1550	1450
DBD-150GF	150/187.5	165/206.25	270	6CTA8.3-G2	6.L	114*135	0.33	0.55	2500*1000*1650	1800
DBD-200GF	200/250	220/275	360	6CTAA8.9-G2	6.L	114*135	0.33	0.55	2700*1000*1700	2000
DBD-300GF	300/375	330/412.5	540	6ZTAA13-G3	6.L	130*163	0.33	0.55	3200*1250*1800	3000
DBD-400GF	400/500	440/550	720	KT38T	6.L	159*159	0.33	0.55	3700*1550*2050	3970
DBD-500GF	500/625	550/687.5	900	KTAA5.9-G6A	6.L	159*159	0.33	0.55	4000*1850*1950	4600
DBD-600GF	600/750	660/825	1080	KTA38-G2	12.V	159*159	0.33	0.55	4220*1850*2100	6200
DBD-800GF	800/1000	880/1100	1440	KTA38-G5	12.V	159*159	0.33	0.55	4220*1850*2450	7150
DBD-1100GF	1100/1375	1210*1512.5	1980	KTA50-G8	16.V	159*159	0.33	0.55	5250*2070*2600	11900
DBD-1200GF	1200/1500	1320/1650	2160	KTA50-GS8	16.V	159*159	0.33	0.55	6000*2400*2600	12000

YUCHAI



The Yuchai gas generator set can be used with different types of gas, such as natural gas, biogas, coalbed methane, oilfield associated gas, synthetic gas, etc.

On the basis of mature product platforms, Yuchai has independently developed and manufactured high-temperature wear-resistant materials and high-strength components suitable for gas generator sets, greatly improving the reliability and durability of the products, with a maximum overhaul period of 40000 hours.



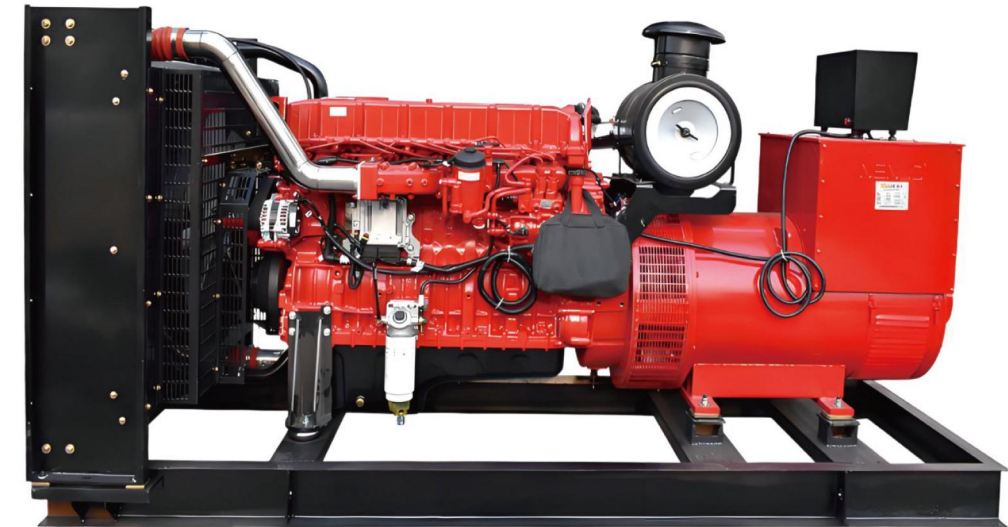
Yuchai series gas generator set

Genset's model	Frequency (Hz)	Power (kw)	Speed (r/min)	Dimension (L*W*H mm)	Weight (kg)
DBD-YC6KG-250N5LC	50	250	1500	3200*1320*1670	3030
DBD-YC6TG-300N5LC	50	300	1500	3450*1400*1810	3650
DBD-YC6TDG-350N5LC	50	350	1500	3550*1470*1910	4270
DBD-YC6TDG-400N5LC	50	400	1500	3550*1470*1910	4390
DBD-YC6CG-400N5LC	50	400	1500	4900*2560*2840	8690
DBD-YC6CG-500N5LC	50	500	1500	4900*2560*2840	8890
DBD-YC6CG-600N5LC	50	600	1500	4900*2560*2840	9030
DBD-YC12VTDG-700N5LC	50	700	1500	5000*2560*2940	9050
DBD-YC12VTDG-800N5LC	50	800	1500	5100*2560*2940	9350
DBD-YC12VCG-1000N5LC	50	1000	1000	6000*2600*3015	17500

HANMA



Hanma diesel generator set is a reliable and efficient generator equipment widely used in industries such as engineering construction, agriculture and animal husbandry, industrial production, mining, national defense, and ocean navigation, providing professional and relatively stable energy supply for various facilities and equipment. As a professional service provider for market sales, maintenance and daily upkeep of Hanma diesel generator sets, we will provide you with 24-hour attentive service.

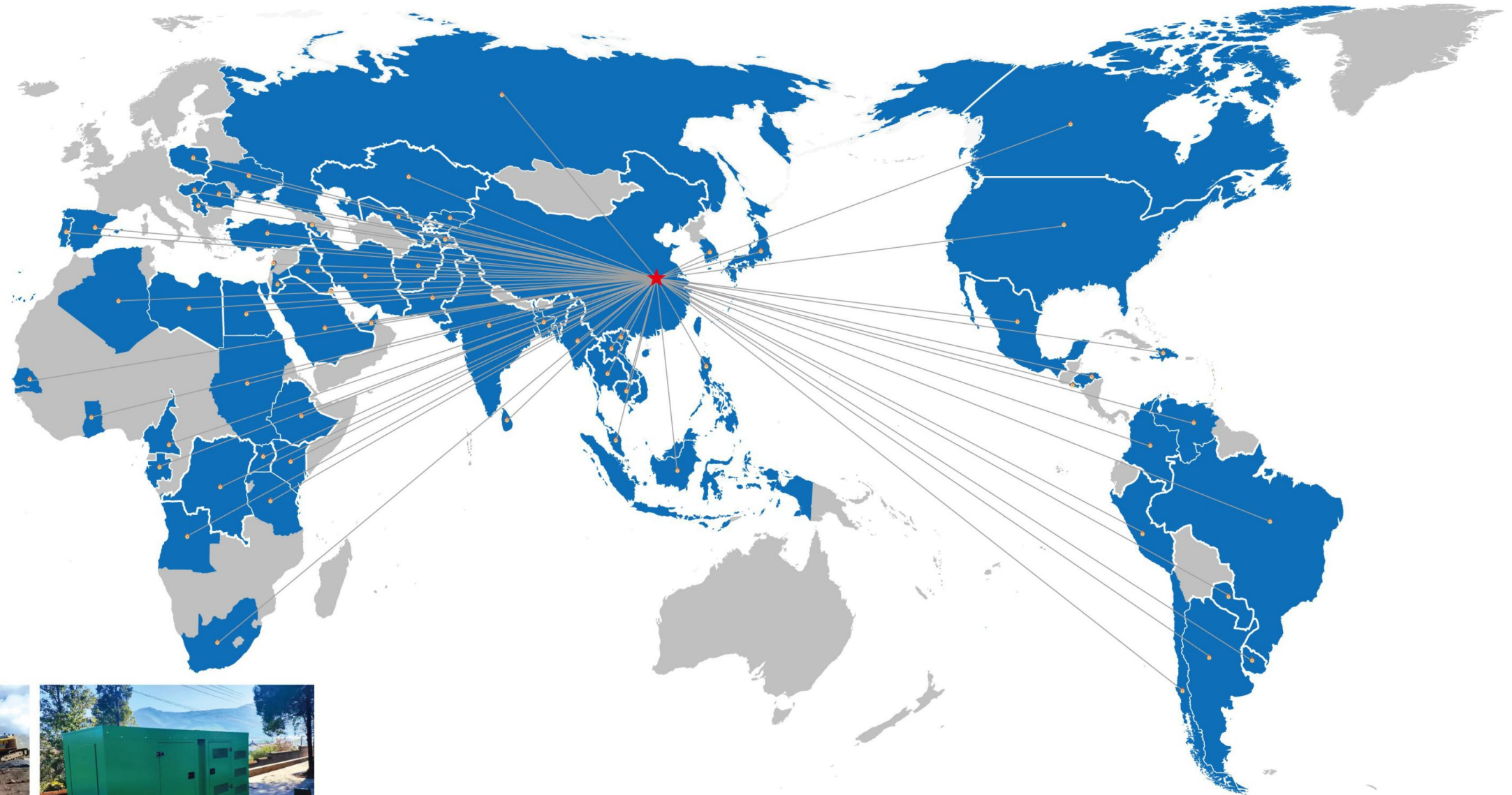


Hanma series gas generator set

Genset's model	Engine model	Engine power		Number of vat	Bore stroke ratio (mm)	Displacement (L)	Fuel consumption (g/kw.h)	Output power	
		KW	KVA					KW	KVA
DBD-HM-280GF	HMT12F.380 30	280	350	6	128*153	11.8	190	224	280
DBD-HM-300GF	HMT12F.408 32	300	375	6	128*153	11.8	191	240	300
DBD-HM-300GF	HMT13F.408 32	300	375	6	130*161	12.8	192	240	300
DBD-HM-320GF	HMT13F.435 32	320	400	6	130*161	12.8	192	256	320

SALES NETWORK

SOLID AND PERFECT SERVICE,
MAKE THE COMPANY'S MARKETING
NETWORK COVER THE WHOLE COUNTRY,
PRODUCTS ARE TO OVERSEAS



SOME SASES



Tanzania project



Ethiopia project



Congo project



Nigeria project



Saudi Arabia project



Qatar project



Colombia project



Fiji project



USA project

COOPERATIVE CUSTOMERS

