

--IPS-LH8 Series -- Handheld Fiber Laser Marking Machine

Intelligent red light positioning system
safe and efficient



Light & Smart

Simple operation

One press marking

Brand new Handheld Laser Inkjet Printer System

Long-Term Operation Stability

Use high-quality and precise parts, say no to substandard products

Self-developed software ensures stable performance without any faults

Efficient

Line speed up to 7000mm/s

Utilizes standard and customized communication protocols

High performance self-developed smart chip, high efficiency in processing of huge data and complex graphics.

Easy-To-Operate

Intelligent touch screen operation interface

System content is easy to use

Support various languages

Capability of intergration

Thin and light body with high-density material

High-transmitted fused silica lens ensures high stability

The focal length can be adjusted freely, which can adapt to various working distances, and the production line integration is more flexible

With more than ten years of industry experience
Easy to meet your needs



Metal



Pharmaceutical



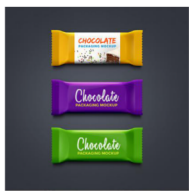
Cosmetic



Daily chemical



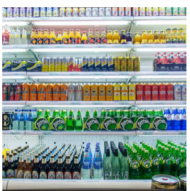
Home appliances



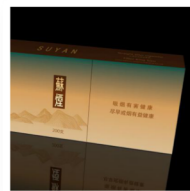
Food



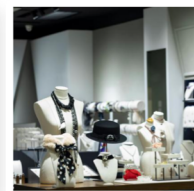
Electronics



Beverage



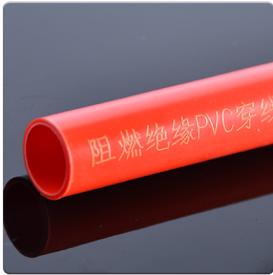
Tobacco



Jewelry

Various contents and materials can be marked

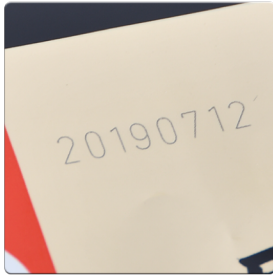
You can mark whatever you want.



TEXT



LOGO



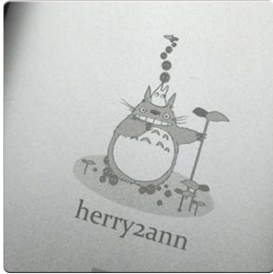
Date



Bar code



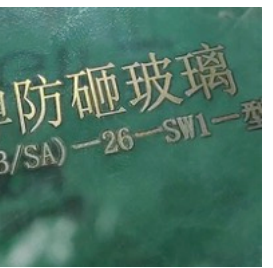
QR code



Graphics



Metal



Glass



Plastic

You can mark what you want quickly

Intelligent touch screen with humanized system

PLT/JPG/DXF/BMP multi-format files are stable

and compatible



USB import



Touch screen



One key marking



High resolution



Precise



IPS-LH8 Series specification

Economical Fiber Laser Marking Machine POWER VERSION

Model	IPS-LH820	IPS-LH830	IPS-LH850
Material	Engineering Plastics		
Laser Gun Model	Fiber Laser Generator		
Laser Power	≥18W	≥25W	≥50W
Laser Wavelength	1064nm		
Scanning Method	High-precision two-dimensional scanning system		
Marking Speed	≤7000mm/s		
Main Control	Highly integrated motherboard with built-in 7-inch touch screen		
Maximum Pulse Energy	0.75mJ		
Frequency Adjustable Range	30-60 kHz		
Operating System	Linux		
Cooling system	Air cooling		
Type of drawings	Both dot matrix and vector		
Reflector size	Standard: 8.5mm		
Marking field	50mm×50mm (Standard) \ 100mm×100mm		
Positioning method	Red Light with Outline Indication		
Lines of marking	Any line within the marking field		
Line Speed	650 characters/sec(according to the material and contents)		
Language	Simplified Chinese, Traditional Chinese, English, Korean, Russian, Arabic numerals and other standard fonts		
File Format	BMP/DXF/HPGL/JPEG/PLT		
Barcode/QR code	CODE39、CODE128、CODE126、EAN13、PDF417、01CODE、QR、AZTECCODE、DM、GS1DM、DOTCODE、HANXINCODE...		
Power Supply	220V		
Maximum Power Consumption	≤200W		≤300W
Weight	7.8KG		8.5KG
Handheld Size	325mmX79mmX151mm		241.5mmX79mmX151mm
Control Box Size	310mmX260mmX307mm		310mmX269mmX307mm
Pollution Level	2		
Overvoltage Category	II		
Working Environment Temperature	0-40°C		
Working Environment Humidity	30 -85 RH (No condensation)		

IPS-LH8 Series specification

Economical Fiber Laser Marking Machine BATTERY VERSION

Model	IPS-LH820B	IPS-LH830B	IPS-LH850B
Material	Engineering Plastics		
Laser Gun Model	Fiber Laser Generator		
Laser Power	≥18W	≥25W	≥50W
Laser Wavelength	1064nm		
Scanning Method	High-precision two-dimensional scanning system		
Marking Speed	≤7000mm/s		
Main Control	Highly integrated motherboard with built-in 7-inch touch screen		
Maximum Pulse Energy	0.75mJ		
Frequency Adjustable Range	30-60 kHz		
Operating System	Linux		
Cooling system	Air cooling		
Type of drawings	Both dot matrix and vector		
Reflector size	Standard: 8.5mm		
Marking field	50mm×50mm (Standard) \ 100mm×100mm		
Positioning method	Red Light with Outline Indication		
Lines of marking	Any line within the marking field		
Line Speed	650 characters/sec(according to the material and content)		
Language	Simplified Chinese, Traditional Chinese, English, Korean, Russian, Arabic numerals and other standard fonts		
File Format	BMP/DXF/HPGL/JPEG/PLT		
Barcode/QR code	CODE39、CODE128、CODE126、EAN13、PDF417、01CODE、QR、AZTECCODE、DM、GS1DM、DOTCODE、HANXINCODE...		
Battery Capacity	12 Ah		
Endurance(22°C)	≤7h		
Charging time(full)	4h		
Weight	8.4KG		9.1KG
Handheld size	241.5mmX79mmX151mm		325mmX79mmX151mm
Control box size	310mmX260mmX307mm		310mmX269mmX307mm
Pollution level	2		
Overvoltage category	II		
Working Environment Temperature	0-40°C		
Working Environment Humidity	30 -85 RH (No condensation)		

Equipment Appearance

Appearance of handheld part

