



河北金迈玛钢有限公司
HEBEI JINMAI CASTING CO.,LTD.



COMPANY INTRODUCTION

金迈玛钢 >>>

河北金迈玛钢有限公司原鹿泉市栈道桥西玛钢有限公司，始建于1988年，成立于1998年，注册资金2100万人民币。现有员工1000余人，公司位于石家庄市鹿泉区栈道玛钢工业区，占地面积4万平方米，地理位置优越，交通便利。

公司生产能力强，拥有先进的生产工艺和机械化生产设备，专业生产QIAO牌，QXM牌，CWD牌英标，美标，德标玛钢管件及钢塑管件；销售范围广，拥有300多家分销店遍布全国各地，国外市场遍及欧洲，美洲，亚洲，大洋洲，非洲等。

我公司已经取得ISO9001质量体系认证及法国BV认证，产品质量过硬，受到国内外客户一致好评。

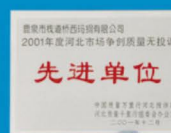
公司的宗旨是：安全生产，质量第一，客户至上，重合同，重信用，公司将据此宗旨与国内外朋友共谋发展。

HEBEI JINMAI CASTING CO.,LTD.,which named LUQUAN ZHANDAO QIAOXI MALLEABLE IRON PIPE FITTINGS CO.,LTD.,was first built in 1988,and founded in 1998 with the investment of ¥2100 million.Our factory existing staff of more than 1000 people,which is located in Zhandao Malleable Iron Zone,Shijiazhuang City,Luquan District.Covering an area of 40 thousand square meters.Our position is Predominant and has convenient traffic.

Our company has a strong production capacity,We are professional enterprise in developing and producing the QIAO Brand,QXM Brand,CWD Brand,with the British standard,American standard and DIN standard cast iron pipe fittings and malleable iron pipe fittings of lining plastic.Our company has a large market,which has almost 300 retail shop in our country,we also sell to Europe,American,Asian,Australasia,Africa,all over the world.

Our company has passed the quality certification of ISO 9001 and the BV (FRANCE).Our products has reliable quality and get the high praise from our domestic and foreign customers.

The tenet of the company is:producing safely,ensuring quality first,carring out the contract seriously,and keeping faith.Following that tenet,we hope we can seek development with the friends at home and abroad together.





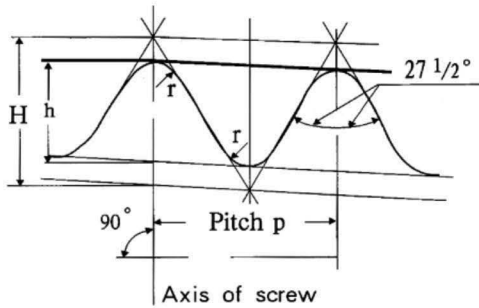
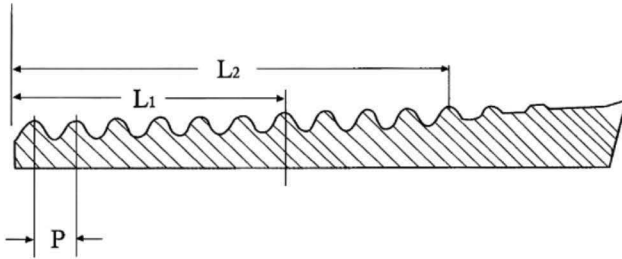
**JINMAI
PROCESS FLOW**
工艺流程 >>>



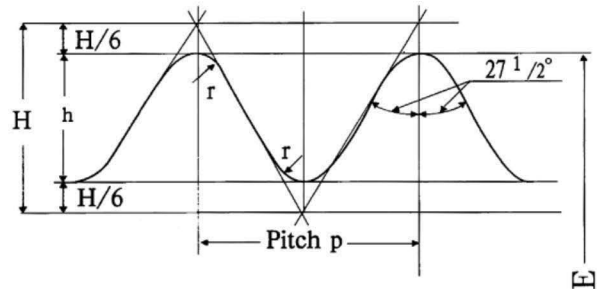
JINMAI



This information is selected from the
British Specification Pipe Threads
B. S. NO. 21, 1973 Table 1.



$H=0.960237 \times P$
 $h=0.640327 \times P$
 $r=0.137278 \times P$
 Taper Threads



TAPER 1 IN 16 on dia. (Shown exaggerated in diagram)

$H=0.960491 \times P$
 $h=0.640327 \times P$
 $r=0.137329 \times P$
 Parallel Threads

(Unit: inch)

Nominal Bore of pipe	E Diameter at Gauge Plane (Gauge Diameter)	L1 Distance of Gauge Diameter from End (Gauge Length)	L2 Length of Effective Thread	P pitch	H Depth of Thread	Number of Threads per Inch
1/8	0.383	0.1563	0.2545	0.03571	0.0229	28
1/4	0.518	0.2367	0.3814	0.05263	0.0337	19
3/8	0.656	0.2500	0.3947	0.05263	0.0337	19
1/2	0.825	0.3214	0.5178	0.07143	0.0457	14
3/4	1.041	0.3750	0.5714	0.07143	0.0457	14
1	1.309	0.4091	0.6591	0.09091	0.0582	11
1 1/4	1.650	0.5000	0.7500	0.09091	0.0582	11
1 1/2	1.882	0.5000	0.7500	0.09091	0.0582	11
2	2.347	0.6250	0.9204	0.09091	0.0582	11
2 1/2	2.960	0.6875	1.0511	0.09091	0.0582	11
3	3.460	0.8152	1.1761	0.09091	0.0582	11
4	4.450	1.0000	1.4091	0.09091	0.0582	11
5	5.450	1.1250	1.5795	0.09091	0.0582	11
6	6.450	1.1250	1.5795	0.09091	0.0582	11



Elbow 90°



Reducing Elbow



Elbow 45°



Street Elbow 90°



Side Outlet Elbow



Tee



Reducing Tee



Cross



Crossover



Eccentric Nipple



Socket



Reducing Socket



Socket M&F



Hexagon Nipple



Reducing Nipple



Y Branche 45°



Bushing



Locknut



Cap



Hexagon Cap



Flat Seat Union



Conical Female Union



Conical M&F Union



Conical Brass Union



Flange



Plain Elbow



Plain Tee



Plain Socket



Plain M&F Socket



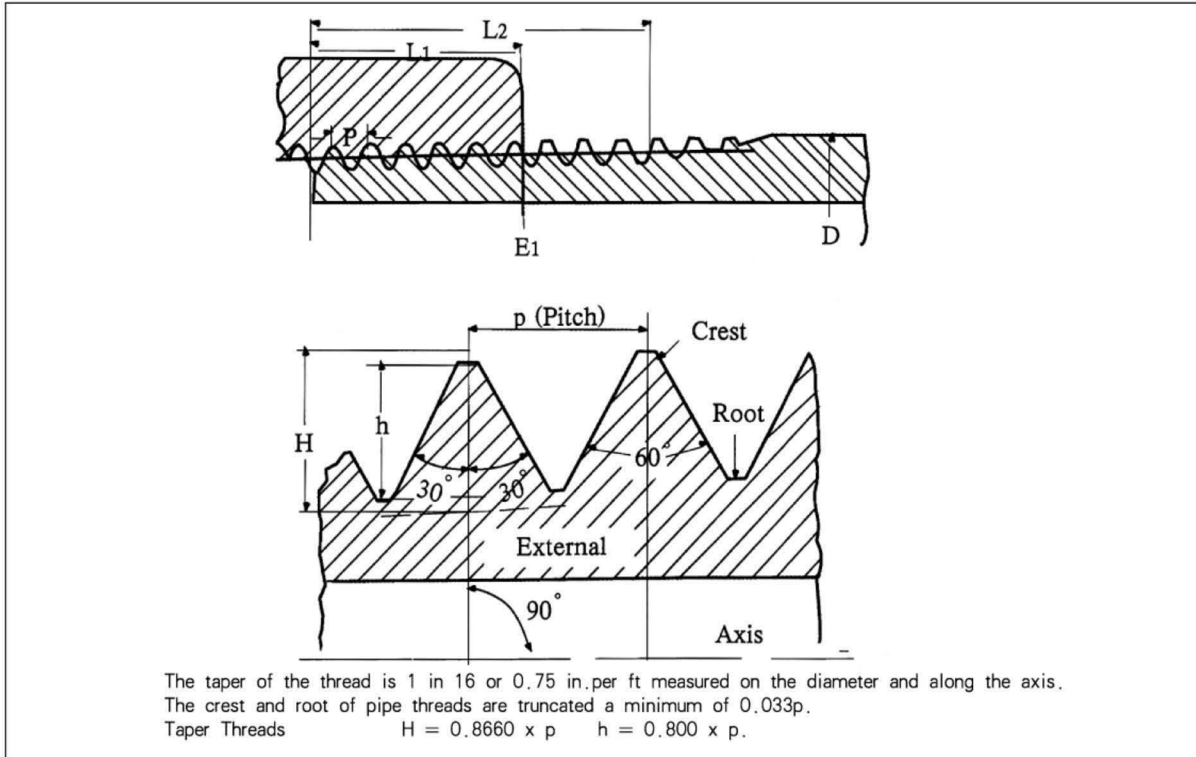
Plain Plug



河北金迈玛钢有限公司

HEBEI JINMAI CASTING CO.,LTD.

This information is selected from the American Standard for Pipe Threads, ANSI B1.20.1-1983 Table 2.



(Unit: inch)

Nominal Pipe Size	D Outside Diameter of Pipe	E1 Pitch Diameter at End of Internal Thread	L1 Normal Engagement by Hand between External and internal Thread	L2 Length of Effective Thread	P Pitch of Thread	H Depth of Thread	Number of Threads per inch
1/8	0.405	0.37360	0.1615	0.2639	0.03704	0.02963	27
1/4	0.540	0.49163	0.2278	0.4018	0.05556	0.04444	18
3/8	0.675	0.62701	0.240	0.4078	0.05556	0.04444	18
1/2	0.840	0.77843	0.320	0.5337	0.07143	0.05714	14
3/4	1.050	0.98887	0.339	0.5457	0.07143	0.05714	14
1	1.315	1.23863	0.400	0.6828	0.08696	0.06957	11.5
1 1/4	1.660	1.58338	0.420	0.7068	0.08696	0.06957	11.5
1 1/2	1.900	1.82234	0.420	0.7235	0.08696	0.06957	11.5
2	2.375	2.29627	0.436	0.7565	0.08696	0.06957	11.5
2 1/2	2.875	2.76216	0.682	1.1375	0.12500	0.10000	8
3	3.500	3.38850	0.766	1.2000	0.12500	0.10000	8
3 1/2	4.000	3.88881	0.821	1.2500	0.12500	0.10000	8
4	4.500	4.38712	0.844	1.3000	0.12500	0.10000	8
5	5.563	5.44929	0.937	1.4063	0.12500	0.10000	8
6	6.625	6.50597	0.958	1.5125	0.12500	0.10000	8
7	8.625	8.50003	1.063	1.7125	0.12500	0.10000	8
10	10.750	10.62094	1.210	1.9250	0.12500	0.10000	8
12	12.750	12.61781	1.360	2.1250	0.12500	0.10000	8



Elbow 90°



Reducing Elbow



Elbow 45°



Street Elbow 90°



Side Outlet Elbow



Tee



Reducing Tee



Socket



Reducing Socket



M&F Socket



Cross



Reducing Cross



Bend M&F



Hexagon Nipple



Reducing Nipple



Y Branche 45°



Bushing



Cap



Hexagon Cap



Locknut



Flat Seat Union



Conical Female Union



Conical M&F Union



Conical Brass Union



Flange



Steel Pipe Nipple



Steel Coupling



Steel Clamps



TCC



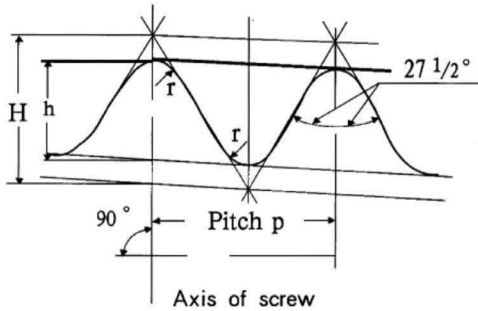
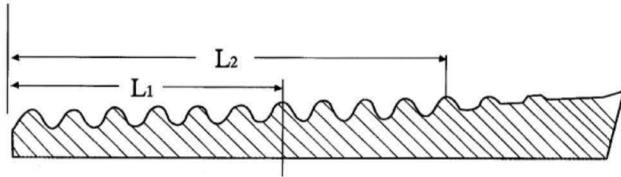
Junction Box



河北金迈玛钢有限公司

HEBEI JINMAI CASTING CO.,LTD.

This information is selected from the Whitworth Pipe Threads DIN 2999:1960.

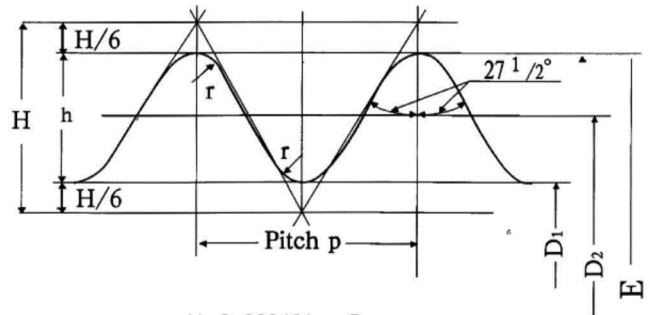


$$H=0.960237 \times P$$

$$h=0.640327 \times P$$

$$r=0.137278 \times P$$

Taper 1:16
Taper Threads



$$H=0.960491 \times P$$

$$h=0.640327 \times P$$

$$r=0.137329 \times P$$

Parallel Threads

(Unit: mm)

Size of thread inches	Nominal width of the tubes inch.mm		Distance of the measuring plane L1	Thread measures							Effective length of thread L2
				Outside diameter E	Flange diameter D2	Core diameter D1	Pitch P	Number of threads per 1 in. Z	Depth of thread H	Radius R ≈	
R1/8	1/8	6	4.0	9.728	9.147	8.566	0.907	28	0.581	0.125	6.5
R1/4	1/4	8	6.0	13.157	12.301	11.445	1.337	19	0.856	0.184	9.7
R3/8	3/8	10	6.4	16.662	15.806	14.950	1.337	19	0.856	0.184	10.1
R1/2	1/2	15	8.2	20.955	19.793	18.631	1.814	14	1.162	0.249	13.2
R3/4	3/4	20	9.5	26.441	25.279	24.117	1.814	14	1.162	0.249	14.5
R1	1	25	10.4	33.249	31.770	30.291	2.309	11	1.479	0.317	16.8
R1 1/4	1 1/4	32	12.7	41.910	40.431	38.952	2.309	11	1.479	0.317	19.1
R1 1/2	1 1/2	40	12.7	47.003	46.324	44.845	2.309	11	1.479	0.317	19.1
R2	2	50	15.9	59.614	58.135	56.656	2.309	11	1.479	0.317	23.4
R2 1/2	2 1/2	65	17.5	75.184	73.705	72.226	2.309	11	1.479	0.317	26.7
R3	3	80	20.6	87.884	86.405	84.926	2.309	11	1.479	0.317	29.8
R3 1/2	3 1/2	90	22.2	100.330	98.851	97.372	2.309	11	1.479	0.317	31.4
R4	4	100	25.4	113.030	111.551	110.072	2.309	11	1.479	0.317	35.8
R5	5	125	28.6	138.430	136.951	135.672	2.309	11	1.479	0.317	40.1
R6	6	150	28.6	163.830	162.351	160.872	2.309	11	1.479	0.317	40.1



Elbow 90°



Street Elbow 90°



M&F Bend 90°



Female Bend 90°



M&F Bend 45°



Union Elbow F&F



Union Elbow M&F



Ceiling



Tee



Reducing Tee



Socket



Reducing Socket



Socket M&F



Hexagon Cap



Locknut



Bushing



Plug



Flat Seat Union



Conical Female Union



Conical Brass Union



Hexagon Nipple



rubber flexible joint flange



Rubber Flexible Joint Union



Universal Air hose Couplings



Universal Air hose Couplings



Elbow



Fast coupling



mechanical cross thread outlet



hdpe coupling



PFTETAP





90° Elbow(90LB)



Street Elbow(SLB)



Reducing Elbow(RLB)



45° Elbow(45LB)



45° Street Elbow(45SLB)



Y Tee(YTB)



Tee(TB)



Reducing Tee(RTB)



Cross(+B)



Socket Banded(SB)



Neg Bushing (NEG)



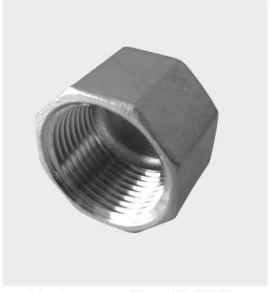
Hexagon Nipple(HN)



Square Plug (SQ)



Reducing Socket Banded(RSB)



Hexagon Cap(HCB)



Hexagon Plug(HP)



Cap(CB)



Hexagon Nut(LN)



Hexagon Bushing(HB)



Socket O.D. Machined(SPE)



Union F/F(CU FF)



Union BW/BW(CU BW)



Union M/F(CU MF)



Union M/F(CU MF)



Union M/M(CU MM)



Union M/M(CU MM)



Elbow Union F/M(CULB FM)



Elbow Union F/F(CULB FF)



Hose Nipple (HON-F)



Hose Nipple (HON)



河北金迈玛钢有限公司
HEBEI JINMAI CASTING CO.,LTD.



执行标准:

国家标准: GB/T3287-2000
国际标准: ISO5922/280 49/ISO7-1
英国标准: BS EN10242 VS 143&1256
ISO7/1
美国标准: ASME B16.4 UNION B16.39
ANSI B1 20.1
德国标准: ISO49 DIN 2950 DIN EN 10242
ISO7/1
衬塑管件行业标准: CJ/T137-2001

STANDARDS:

GB/T3287-2000
ISO5922/280 49/ISO7-1
BS EN10242 VS 143&1256
ISO7/1
ASME B16.4 UNION B16.39
ANSI B1 20.1
ISO49 DIN 2950 DIN EN 10242
ISO7/1
CJ/T137-2001

产品性能:

抗拉强度: $\geq 300\text{N/MM}$
工作压力: 1.6Mpa
实验压力: 2.4Mpa
硬度: $\leq \text{HB180}$
适用于水路, 油路, 空气, 煤气等管路的连接

Mechanical data and performance:

Tensile strength: $\geq 300\text{N/MM}$
Working pressure: 1.6Mpa
Test pressure: 2.4Mpa
Hardness: $\leq \text{HB180}$
These fittings are widely connected to the pipes with water, oil, air, coal gas ect. as media.

INTERNATIONAL PRICE LIST FOR AMERICAN AND DIN STANDARD THREADS

M-16 PRICE PER 100 PIECES IN US DOLLAR

FIG NO.	DESCRIPTION	NOMINAL BORE OF PIPE IN INCH/MM											
		1/8",1/4" 3/8"	1/2"	3/4"	1"	1-1/4"	1-1/2"	2"	2-1/2"	3"	4"	5"	6"
		6,8,10mm	15mm	20mm	25mm	32mm	40mm	50mm	65mm	80mm	100mm	125mm	150mm
1	Bends Long M&F 90°,Beaded,Banded	34	34	46	68	110	150	230	470	680	1400	3000	5000
1a	Bends Short M&F 90°,Beaded,Banded	32	32	44	64	105	140	220	—	—	—	—	—
2	Bends Long Female 90°,Beaded,Banded	34	34	52	75	120	170	260	550	720	1500	3500	4800
2a	Bends Short Female 90°,Beaded,Banded	32	32	50	70	110	160	250	520	680	—	—	—
3	Bends Male 90°	42	42	54	78	156	210	270	—	—	—	—	—
40	Bends M&F 45°,Beaded,Banded	32	32	42	67	100	140	220	460	630	1300	3000	4500
41	Bends Female 45°,Beaded,Banded	35	35	56	80	130	180	280	500	750	1500	—	—
85	Cross Over,Beaded,Banded	57	57	80	130	180	220	380	—	—	—	—	—
1090	Elbows Equal Female 90°,Plain	—	17	24	35	56	70	110	—	—	—	—	—
1090R	Elbows Reducing Female 90°,Plain	—	—	29	44	71	88	130	—	—	—	—	—
90	Elbows Equal Female 90°,Beaded,Banded	20	18	26	40	60	80	120	210	320	580	1600	2300
90R	Elbows Reducing Female 90°,Beaded,Banded	24	22	29	44	71	88	130	270	440	750	2000	3000
1092	Elbows Equal M&F 90°,Plain	—	20	29	43	75	92	130	—	—	—	—	—
92	Elbows Equal M&F 90°,Beaded,Banded	22	20	20	43	75	92	130	290	450	750	2000	3000
92R	Elbows Reducing M&F 90°,Beaded,Banded	35	35	55	65	95	110	180	350	560	—	—	—
94	Elbows Equal Male 90°	32	32	44	52	88	95	280	—	—	—	—	—
95	Elbows Union Female Flat Seat Without Gaskets	80	80	100	120	170	230	320	—	—	—	—	—
96	Elbows Union Female Conical Joint Iron To Iron	100	100	130	150	210	270	400	670	1150	2160	—	—
97	Elbows Union M&F Flat Seat Without Gaskets	90	90	115	140	220	260	370	—	—	—	—	—
98	Elbows Union M&F Conical Joint Iron To Iron	110	110	145	170	240	300	440	740	1260	2730	—	—
1120	Elbows Equal Female 45°,Plain	—	18	27	40	65	80	120	—	—	—	—	—
120	Elbows Equal Female 45°,Beaded,Banded	22	18	27	40	65	80	120	250	380	650	1900	2200
1130	Tees Equal Female 90°,Plain	—	21	31	49	74	94	140	—	—	—	—	—
1130R	Tees Reducing Female 90°,Plain	—	—	41	63	95	120	170	—	—	—	—	—
130	Tees Equal Female 90°, Beaded,Banded	25	23	33	52	78	100	150	320	420	760	2000	2700
130R	Tees Reducing Female 90°, Beaded,Banded	34	34	41	63	95	120	170	350	500	950	2500	3400
165	Tees Equal Lateral Y Branches,Beaded,Banded	60	60	70	100	170	220	320	700	1100	1700	—	—
1180	Crosses Equal Female 90°, Plain	—	50	70	95	140	190	260	—	—	—	—	—
1180R	Crosses Reducing Female 90°,Plain	—	—	90	120	170	230	300	—	—	—	—	—
180	Crosses Equal Female 90°, Beaded,Banded	50	50	70	95	140	190	260	500	700	1300	3000	4500
180R	Crosses Reducing Female 90°,Beaded,Banded	—	90	90	120	170	230	300	600	850	—	—	—
221	Side Outlet Elbows Female 90°,Beaded,Banded	55	51	63	90	130	170	220	—	—	—	—	—
223	Side Outlet Tees Female 90°,Beaded,Banded	—	60	80	110	160	220	320	680	—	—	—	—
1240	Reducing Sockets Female With Ribs,Plain	—	—	24	32	47	56	85	—	—	—	—	—
240	Reducing Sockets Female With Ribs,Beaded,Banded	17	17	24	32	47	56	85	160	250	460	900	1200
241	Reducing Hexagon Bushes	15	15	17	25	40	47	65	110	160	300	600	840
245	Reducing Hexagon Nipples	20	20	25	36	60	75	110	200	340	600	—	—
246(529a)	Extension Pieces (Sockets M&F) Equal	30	30	35	50	70	85	120	170	—	—	—	—
1270	Sockets Parallel Threads With Ribs,Plain	—	20	26	42	60	72	110	—	—	—	—	—
270	Sockets Parallel Threads With Ribs,Beaded,Banded	22	20	26	42	60	72	110	200	280	450	1100	1400
271	Sockets Parallel Threads(Coupling) With Ribs,Beaded,Banded	15	14	19	32	45	55	85	150	220	360	850	1100
280	Hexagon Nipples Equal	15	15	20	28	41	57	78	130	220	350	750	1300
290	Plugs,Beaded	13	13	16	21	32	37	53	110	150	265	—	—
291	Plugs,Plain	12	12	15	20	30	35	50	100	140	250	650	750
300	Hexagon Caps,Beaded,Banded	14	14	17	24	35	46	64	130	180	300	700	1000
301	Round Caps,Beaded,Banded	14	14	17	24	35	46	64	130	180	300	700	1000
310	Backnuts of Locknuts	—	13	13	16	21	27	42	80	120	230	360	500
321	Round Flanges,Light Pattern Without Bolt Hole	—	52	72	84	120	140	170	280	360	550	900	1000
322	Round Flanges,Light Pattern With Bolt Hole	60	60	85	100	140	160	200	320	420	620	1040	1150
330	Union Female Flat Seat,Iron to Iron Seat,Without Gaskets	60	57	70	85	120	160	230	400	630	1200	2100	2700
340	Union Female Conical Joint,Iron to Iron Seat	75	75	95	110	150	200	300	500	850	1600	2500	3500
341	Union M&F Conical Joint,Iron to Iron Seat	85	85	110	130	170	230	340	570	1000	1840	2880	4000
342	Union Female Conical Joint,Brass to Iron Seat	90	90	115	135	180	240	360	600	1000	1920	3000	4200
380	Short Compression Coupling (Union Dresser)	—	174	232	346	445	549	818	1068	1170	1750	—	—
390	Long Compression Coupling (Union Dresser)	—	192	268	369	480	588	836	1154	1292	1813	—	—
400	Holder Bats	—	38	46	52	60	72	90	150	170	220	—	—

**THE BEST PEOPLE,
MAKING BETTER PRODUCTS**

河北金迈玛钢有限公司
HEBEI JINMAI CASTING CO.,LTD.

电话(Tel) : 0086-311-87036110 0086-311-82016713

传真(Fax) : 0086-311-87873733 0086-311-82017702

邮箱(Email) : malleable@qxmico.com

地址(Add) : 中国.石家庄市鹿泉区石井乡栈道村

ADDRESS:ZHANDAO,SHIJING,LUQUAN,CHINA

网站(Web) : [Http://www.qxmico.com](http://www.qxmico.com)

[Http://www.qxmico.com.cn](http://www.qxmico.com.cn)