

Test Report IEC/EN 60529 Degrees of protection provided by enclosures (Ip code)	
Report Reference No..... :	GRZJ240815802S01
Date of issue..... :	2024/08/30
Total number of pages..... :	27
Compiled by (name+signature):	George Chen <i>George Chen</i>
Reviewed by (name+signature):	Bear Chen <i>Bear Chen</i>
Approved by (name+signature):	Albert Wen <i>Albert Wen</i>
Testing Laboratory..... :	Guangdong Grzan Quality Inspection Co., Ltd.
Address..... :	B103, 1st Floor, Building 2, Bangkai Technology Industrial Park (Phase I), South of Sightseeing Road and West of Bangkai Road, Tangjia Community, Fenghuang Street, Guangming District, Shenzhen City, Guangdong Province, China
Applicant's name..... :	Shenzhen KY Intelligent Digital Co., Ltd
Address..... :	B1 Building 5th floor XuJingChang Industry zoom, Fuhai road, Baoan, SZ. 518126
Test Report Form No..... :	QR29-EN-03-IEC 60529
Test Report Form Originator.... :	Guangdong Grzan Quality Inspection Co., Ltd.
Master TRF..... :	Dated 2024
Test specification:	
Standard..... :	<input checked="" type="checkbox"/> IEC 60529: 2013
Test procedure..... :	Test report only
Non-standard test method..... :	N/A
Copyright © 2019 Worldwide System for Conformity Testing and Certification of Electrotechnical Equipment and Components (IECEE), Geneva, Switzerland. All rights reserved. This publication may be reproduced in whole or in part for non-commercial purposes as long as the IECEE is acknowledged as copyright owner and source of the material. IECEE takes no responsibility for and will not assume liability for damages resulting from the reader's interpretation of the reproduced material due to its placement and context.	
General disclaimer:	
The test results presented in this report relate only to the object tested. This report shall not be reproduced, except in full, without the written approval of the Issuing Testing Laboratory. The authenticity of this Test Report and its contents can be verified by contacting the Testing Laboratory, responsible for this Test Report.	
Test item description..... :	SMART WATCH
Trade Mark..... :	/
Manufacturer..... :	Shenzhen KY Intelligent Digital Co., Ltd
Model/Type reference..... :	X22, X22MAX
Ratings..... :	internally power supply: 3.8Vd.c.,330mAh

**Test Report
IEC/EN 60529**

Degrees of protection provided by enclosures (IP Code)

IEC_60529_1989+A1:1999+A2:2013

Report No.: GRZJ240815802S01

Summary of testing	
Tests performed (name of test and test clause): All the requirements of the standard were evaluated in this test report .	Testing location: Guangdong Grzan Quality Inspection Co., Ltd. B103, 1st Floor, Building 2, Bangkai Technology Industrial Park (Phase I), South of Sightseeing Road and West of Bangkai Road, Tangjia Community, Fenghuang Street, Guangming District, Shenzhen City, Guangdong Province, China
Summary of compliance with National Differences	
List of countries addressed: N/A	
Copy of marking plate	
The artwork below may be only a draft. N/A Main unit label	

Test Report IEC/EN 60529

Degrees of protection provided by enclosures (IP Code)

IEC_60529_1989+A1:1999+A2:2013

Report No.: GRZJ240815802S01

GENERAL INFORMATION	
Test item particulars (see also Clause 6):	
Classification of installation and use..... :	<input checked="" type="checkbox"/> transportable <input type="checkbox"/> fixed
Device type	<input type="checkbox"/> component <input type="checkbox"/> sub-assembly <input checked="" type="checkbox"/> equipment <input type="checkbox"/> system
Mode of operation..... :	<input checked="" type="checkbox"/> Continuous <input type="checkbox"/> non-continuous
Supply connection.....	<input checked="" type="checkbox"/> internally powered <input type="checkbox"/> permanently installed <input type="checkbox"/> appliance coupler <input type="checkbox"/> non-detachable cord
Accessories and detachable parts included... :	N/A
Other options include..... :	N/A
Testing	
Date of receipt of test item(s)..... :	2024-08-15
Dates tests performed..... :	2024-08-15 to 2024-08-30
Possible test case verdicts:	
- test case does not apply to the test object	N/A
- test object does meet the requirement..... :	Pass (P)
- test object was not evaluated for the requirement..... :	N/E (collateral standards only)
- test object does not meet the requirement..... :	Fail (F)
General remarks:	
"(See Attachment #)" refers to additional information appended to the report. "(See appended table)" refers to a table appended to the report. The tests results presented in this report relate only to the object tested. This report shall not be reproduced except in full without the written approval of the testing laboratory. List of test equipment must be kept on file and available for review. Additional test data and/or information provided in the attachments to this report.	
Throughout this report a <input type="checkbox"/> comma / <input checked="" type="checkbox"/> point is used as the decimal separator.	
General product information:	
Model Differences: Model X22 have two series model(model:X22, X22 MAX). They just have different colour. All tests were performed on the model X22.	

Test Report IEC/EN 60529

Degrees of protection provided by enclosures (IP Code)

IEC_60529_1989+A1:1999+A2:2013

Report No.: GRZJ240815802S01

5	Degrees of protection against access to hazardous parts and against solid foreign objects indicated by the first characteristic numeral		P
	The designation with a first characteristic numeral implies that conditions stated in both 5.1 and 5.2 are met.		P
	The first characteristic numeral indicates that:		P
	the enclosure provides protection of persons against access to hazardous parts by preventing or limiting the ingress of a part of the human body or an object held by a person;		P
	and simultaneously the enclosure provides protection of equipment against the ingress of solid foreign objects.		P
	An enclosure shall only be designated with a stated degree of protection indicated by the first characteristic numeral if it also complies with all lower degrees of protection.		P
	However, the tests establishing compliance with any one of the lower degrees of protection need not necessarily be carried out provided that these tests would obviously be met if applied		P
5.1	Protection against access to hazardous parts		P
	Table 1 gives brief descriptions and definitions for the degrees of protection against access to hazardous parts.		P
	Degrees of protection listed in table I shall be specified only by the first characteristic numeral and not by reference to the brief description or definition.		P
	To comply with the conditions of the first characteristic numeral, adequate clearance shall be kept between the access probe and hazardous parts		P
	The tests are specified in Clause 12.		P
	Table I-1 Degrees of protection against access to hazardous parts indicated by the first characteristic numeral		--
	First characteristic numeral	Test conditions (Clause)	--
	0	--	N/A
	1	12.2	P
	2	12.2	P
	3	12.2	P
	4	12.2	P
	5	12.2	P
	6	12.2	P
	<i>In the case of the first characteristic numerals 3, 4, 5 and 6, protection against access to hazardous parts is satisfied if adequate clearance is kept. The adequate clearance should be specified by the relevant product committee in accordance with 12.3.</i>		P

Test Report IEC/EN 60529

Degrees of protection provided by enclosures (IP Code)

IEC_60529_1989+A1:1999+A2:2013

Report No.: GRZJ240815802S01

	<i>Due to the simultaneous requirement specified in Table II, the definition "shall not penetrate" is given in Table I.</i>		P
5.2	Protection against solid foreign objects		P
	Table 2 gives brief descriptions and the definitions for the degrees of protection against the penetration of solid foreign objects including dust.		P
	Degrees of protection listed in Tab II shall only be specified by the first characteristic numeral and not by reference to the brief description or definition.		P
	The protection against the ingress of solid foreign objects implies that the object probes up to numeral 2 in Table 2 shall not fully penetrate the enclosure. This means that the full diameter of the sphere shall not pass through an opening in the enclosure.		P
	Object probes for numerals 3 and 4 shall not penetrate the enclosure at all.		P
	Dust-protected enclosures to numeral 5 allow a limited quantity of dust to penetrate under certain conditions.		P
	Dust-tight enclosures to numeral 6 do not allow any dust to penetrate.		P
	<i>Note Enclosures assigned a first characteristic numeral of 1 to 4 generally exclude both regularly and irregularly shaped solid foreign objects provided that three mutually perpendicular dimensions of the object exceed the appropriate figure in column 3 of Table 2.</i>		P
	The tests are specified in Clause 13.		P
	Table 2 Degrees of protection against solid foreign objects indicated by the first characteristic numeral		P
	First characteristic numeral	Test conditions (Clause)	
	0	--	
	1	13.2	P
	2	13.2	P
	3	13.2	P
	4	13.2	P
	5	13.4 13.5	P
	6	13.4 13.6	P
6	DEGREES OF PROTECTION AGAINST INGRESS OF WATER INDICATED BY THE SECOND CHARACTERISTIC NUMERAL		P
	The second characteristic numeral indicates the degree of protection provided by enclosures with respect to harmful effects on the equipment due to the ingress of water.		P

Test Report IEC/EN 60529

Degrees of protection provided by enclosures (IP Code)

IEC_60529_1989+A1:1999+A2:2013

Report No.: GRZJ240815802S01

	The tests for the second characteristic numeral are carried out with fresh water. The actual protection may not be satisfactory if cleaning operations with high pressure and temperature water jet outside the requirements of second characteristic numeral 9 and/or solvents are used.		P																				
	Table 3 gives brief descriptions and definitions of the protection for the degrees represented by the second characteristic numeral.		P																				
	Degrees of protection listed in Table 3 shall be specified only by the second characteristic numeral and not by reference to the brief description or definition.		P																				
	The tests are specified in Clause 14.		P																				
	Up to and including second characteristic numeral 6, the designation implies compliance also with the requirements for all lower characteristic numerals.		P																				
	However, the tests establishing compliance with any one of the lower degrees of protection need not necessarily be carried out provided that these tests obviously would be met if applied.		P																				
	An enclosure designated with second characteristic numeral 9 only is considered unsuitable for exposure to water jets (designated by second characteristic numeral 5 or 6) and immersion in water (designated by second characteristic numeral 7 or 8) and need not comply with requirements for numeral 5,6,7 or 8 unless it is multiple coded as follows:		N/A																				
	Enclosures for "versatile" application shall meet requirements for exposure to both water jets and temporary or continuous immersion.		N/A																				
	Enclosures for "restricted" application are considered suitable only for the conditions to which they were tested.	IP68	P																				
	Table 3 <i>Degrees of protection against water indicated by the second characteristic numeral</i>		P																				
	<table border="1" style="width: 100%;"> <thead> <tr> <th style="width: 30%;">Second characteristic numeral</th> <th style="width: 40%;">Test conditions (Clause)</th> </tr> </thead> <tbody> <tr> <td style="text-align: center;">0</td> <td style="text-align: center;">--</td> </tr> <tr> <td style="text-align: center;">1</td> <td style="text-align: center;">14.2.1</td> </tr> <tr> <td style="text-align: center;">2</td> <td style="text-align: center;">14.2.2</td> </tr> <tr> <td style="text-align: center;">3</td> <td style="text-align: center;">14.2.3</td> </tr> <tr> <td style="text-align: center;">4</td> <td style="text-align: center;">14.2.4</td> </tr> <tr> <td style="text-align: center;">5</td> <td style="text-align: center;">14.2.5</td> </tr> <tr> <td style="text-align: center;">6</td> <td style="text-align: center;">14.2.6</td> </tr> <tr> <td style="text-align: center;">7</td> <td style="text-align: center;">14.2.7</td> </tr> <tr> <td style="text-align: center;">8</td> <td style="text-align: center;">14.2.8</td> </tr> </tbody> </table>	Second characteristic numeral	Test conditions (Clause)	0	--	1	14.2.1	2	14.2.2	3	14.2.3	4	14.2.4	5	14.2.5	6	14.2.6	7	14.2.7	8	14.2.8		
Second characteristic numeral	Test conditions (Clause)																						
0	--																						
1	14.2.1																						
2	14.2.2																						
3	14.2.3																						
4	14.2.4																						
5	14.2.5																						
6	14.2.6																						
7	14.2.7																						
8	14.2.8																						
	0	--	N/A																				
	1	14.2.1	N/A																				
	2	14.2.2	N/A																				
	3	14.2.3	N/A																				
	4	14.2.4	N/A																				
	5	14.2.5	N/A																				
	6	14.2.6	N/A																				
	7	14.2.7	N/A																				
	8	14.2.8	P																				

Test Report IEC/EN 60529

Degrees of protection provided by enclosures (IP Code)

IEC_60529_1989+A1:1999+A2:2013

Report No.: GRZJ240815802S01

	9	14.2.9	N/A
--	---	--------	-----

7	DEGREES OF PROTECTION AGAINST ACCESS TO HAZARDOUS PARTS INDICATED BY THE ADDITIONAL LETTER		N/A
	The additional letter indicates the degree of protection of persons against access to hazardous parts.	Only IP68	N/A
	Additional letters are only used:		N/A
	if the actual protection against access to hazardous parts is higher than that indicated by the first characteristic numeral;		N/A
	or if only the protection against access to hazardous parts is indicated, the first characteristic numeral being then replaced by an X		N/A
	For example, such higher protection may be provided by barriers, suitable shape of openings or distances inside the enclosure.		N/A
	Table 4 gives access probes considered by convention as representative of parts of the human body or objects held by a person and the definitions for the degrees of protection against access to hazardous parts, indicated by additional letters.		N/A
	An enclosure shall only be designated with a stated degree of protection indicated by the additional letter if the enclosure also complies with all lower degrees of protection.		N/A
	However, the tests establishing compliance with any one of the lower degrees of protection need not necessarily be carried out provided that these tests obviously would be met if applied.		N/A
	The tests are specified in Clause 15.		N/A
	See Annex A for examples of the IP Coding.		N/A
	Table 4 <i>Degrees of protection against access to hazardous parts indicated by the additional letter</i>		N/A
	Additional letter	Test conditions (Clause)	
	A	15.2	N/A
	B	15.2	N/A
	C	15.2	N/A
	D	15.2	N/A

8	SUPPLEMENTARY LETTERS		N/A
	In the relevant product standard, supplementary information may be indicated by a supplementary letter following the second characteristic numeral or the additional letter.		N/A

Test Report IEC/EN 60529

Degrees of protection provided by enclosures (IP Code)

IEC_60529_1989+A1:1999+A2:2013

Report No.: GRZJ240815802S01

	Such exceptional cases shall conform with the requirements of this basic safety standard and the product standard shall state clearly the additional procedure to be carried out during tests for such a classification.		N/A
	The letters listed below have already been designated and have the significance as stated:		N/A
	Letter	Significance	
	H	High-voltage apparatus	N/A
	M	Tested for harmful effects due to the ingress of water when the movable parts of the equipment (e.g. the rotor of a rotating machine) are in motion	N/A
	S	Tested for harmful effects due to the ingress of water when the movable parts of the equipment (e.g. the rotor of a rotating machine) are stationary	N/A
	W	Suitable for use under specified weather conditions and provided with additional protective features or processes	N/A
	Other letters may be used in product standards		N/A
	The absence of the letters S and M implies that the degree of protection does not depend on whether parts of the equipment are in motion or not.		N/A
	This may necessitate tests being done under both conditions.		N/A
	However, the test establishing compliance with one of these conditions is generally sufficient, provided that the test in the other condition obviously would be met if applied		N/A

10	MARKING		N/E
	The requirements for marking shall be specified in the relevant product standard.	Not evaluated in this report.	N/E
	Where appropriate, such a standard should also specify the method of marking which is to be used when:		N/E
	one part of an enclosure has a different degree of protection to that of another part of the same enclosure		N/E
	the mounting position has an influence on the degree of protection		N/E
	the maximum immersion depth and time are indicated		N/E

Test Report IEC/EN 60529

Degrees of protection provided by enclosures (IP Code)

IEC_60529_1989+A1:1999+A2:2013

Report No.: GRZJ240815802S01

11	GENERAL REQUIREMENTS FOR TESTS	P
11.1	Atmospheric conditions for water or dust tests	P
	Unless otherwise specified in the relevant product standard, the tests should be carried out under the standard atmospheric conditions described in IEC 60068-1.	P
	The recommended atmospheric conditions during the tests are as follows:	P
	Temperature range: 15 to 35 °C Relative humidity: 25 to 75% Air pressure: 86 kPa to 106 kPa (860 to 1060 mbar)	P
11.2	Test samples	P
	The tests specified in this standard are type tests	P
	Unless otherwise specified in a relevant product standard, the test samples for each test shall be in a clean and new condition, with all parts in place and mounted in the manner stated by the manufacturer.	P
	If it is impracticable to test the complete equipment, representative parts or smaller equipment having the same full-scale design details shall be tested.	P
	The relevant product standard shall specify details such as:	N/A
	the number of samples to be tested:	N/A
	conditions for mounting, assembling and positioning of the samples, for example by the use of an artificial surface(ceiling, floor or wall):	N/A
	the pre-conditioning, if any, which is to be used:	N/A
	whether to be tested energized or not;	N/A
	whether to be tested with its parts in motion or not.	N/A
	In the absence of such specification, the manufacturer's instructions shall apply.	N/A
11.3	Application of test requirements and interpretation of test results	P
	The application of the general requirements for tests and the acceptance conditions for equipment containing drain-holes or ventilation openings is the responsibility of the relevant technical committee.	P
	In the absence of such specification the requirement of this standard shall apply.	P

Test Report IEC/EN 60529

Degrees of protection provided by enclosures (IP Code)

IEC_60529_1989+A1:1999+A2:2013

Report No.: GRZJ240815802S01

	The interpretation of test results is the responsibility of the relevant technical committee. In the absence of a specification the acceptance conditions of this standard shall at least apply.		P	
11.4	Combination of test conditions for the first characteristic numeral		P	
	Designation with a first characteristic numeral implies that all test conditions are met for this numeral:		P	
	Table 5 <i>Test conditions for degrees of protection indicated by the first characteristic numeral</i>		--	
	First characteristic numeral	Test for protection against	--	
		access to hazardous parts		solid foreign objects
	0	No test required	No test required	N/A
	1	The sphere of 50 mm Ø shall not fully penetrate and adequate clearance shall be kept		N/A
	2	The jointed test finger may penetrate up to its 80 mm length, but adequate clearance shall be kept	The sphere of 12.5 mm Ø shall not fully penetrate	N/A
	3	The test rod of 2.5 mm Ø shall not penetrate and adequate clearance shall be kept		N/A
	4	The test wire of 1,0 mm Ø shall not penetrate and adequate clearance shall be kept		N/A
	5	The test wire of 1,0 mm Ø shall not penetrate and adequate clearance shall be kept	Dust-protected as specified in table 2	N/A
	6	The test wire of 1,0 mm Ø shall not penetrate and adequate clearance shall be kept	Dust-protected as specified in table 2	P
11.5	Empty enclosures		N/A	
	if the enclosure is tested without equipment inside, detailed requirements shall be indicated by the enclosure manufacturer in his instructions for the arrangement and spacing of hazardous parts or parts which might be affected by the penetration of foreign objects or water.	Final assembly equipment		N/A
	The manufacturer of the final assembly shall ensure that after the electrical equipment is enclosed the enclosure meets the declared degree of protection of the final product.			N/A

Test Report IEC/EN 60529

Degrees of protection provided by enclosures (IP Code)

IEC_60529_1989+A1:1999+A2:2013

Report No.: GRZJ240815802S01

12	TESTS FOR PROTECTION AGAINST ACCESS TO HAZARDOUS PARTS INDICATED BY THE FIRST CHARACTERISTIC NUMERAL		P
12.1	Access probes		P
	Access probes to test the protection of persons against access to hazardous parts are given in table 6.		P
12.2	Test conditions		P
	The access probe is pushed against or (in case of the test for first characteristic numeral 2) inserted through any openings of the enclosure with the force specified in table 6.		P
	For tests on low-voltage equipment, a low-voltage supply (of not less than 40 V and not more than 50 V) in series with a suitable lamp should be connected between the probe and the hazardous parts inside the enclosure. Hazardous live parts covered only with varnish or paint or protected by oxidation or by a similar process, are covered by a metal foil electrically connected to those parts which are normally live in operation.		P
	The signal-circuit method should also be applied to the hazardous moving parts of high-voltage equipment.		N/A
	Internal moving parts may be operated slowly, where this is possible.	have not moving part	N/A
12.3	Acceptance conditions		P
	The protection is satisfactory if adequate clearance is kept between the access probe and hazardous parts.		P
	For the test of first characteristic numeral 1, the access probe 50 mm diameter shall not completely pass through the opening.	First characteristic numeral is 6	N/A
	For the test of first characteristic numeral 2, the jointed test finger may penetrate to its 80 mm length, but the stop face (Ø50 mm x 20 mm) shall not pass through the opening. Starting from the straight position, both joints of the test finger shall be successively bent through an angle of up to 90° with respect to the axis of the adjoining section of the finger and shall be placed in every possible position.	First characteristic numeral is 6	N/A
	See annex A for further clarification. Adequate clearance means:		P
12.3.1	For low-voltage equipment (rated voltages not exceeding 1 000V a.c. and 1 500V d.c.)		P

Test Report IEC/EN 60529

Degrees of protection provided by enclosures (IP Code)

IEC_60529_1989+A1:1999+A2:2013

Report No.: GRZJ240815802S01

	The access probe shall not touch hazardous live parts	Rated voltage: internal battery : 3.8Vd.c.330mAh	P
	If adequate clearance is verified by a signal circuit between the probe and hazardous parts.the lamp shall not light.		P
12.3.2	For high-voltage equipment (rated voltages exceeding 1 000 V a.c and 1 500 V d.c.)		N/A
	When the access probe is placed in the most unfavourable position(s), the equipment shall be capable of withstanding the dielectric tests as specified in the relevant product standard applicable to the equipment.	Rated voltage: internal battery : 3.8Vd.c .	N/A
	Verification may be made either by dielectric test or by inspection of the specified clearance dimension in air which would ensure that the tests would be satisfactory under the most unfavourable electric field configuration(see IEC 60071-2).		N/A
	In the case where an enclosure includes sections at different voltage levels the appropriate acceptance conditions for adequate clearance shall be applied for each section.		N/A
12.3.3	For equipment with hazardous mechanical parts:		P
	The access probe shall not touch hazardous mechanical parts.		P
	If adequate clearance is verified by a signal circuit between the probe and hazardous parts.the lamp shall not light.		P

13	TESTS FOR PROTECTION AGAINST SOLID FOREIGN OBJECTS INDICATED BY THE FIRST CHARACTERISTIC NUMERAL			P	
13.1	Test means			P	
	Test means and the main test conditions are given in table 7.			P	
	Table 7 <i>Test means for the tests for protection against solid foreign objects</i>			--	
	First characteristic numeral	Test means (object probes and dust chamber)	Test force	Test conditions, see	--
	0	No test required	--	--	N/A
	1	Rigid sphere without handle or guard 50 ^{+0.05} ₀ mm diameter	50 N±10 %	13.2	N/A
	2	Rigid sphere without handle or guard 12.5 ^{+0.05} ₀ mm diameter	30 N±10 %	13.2	N/A
	3	Rigid steel rod 2.5 ^{+0.05} ₀ mm diameter with edges free from burrs	3N±10 %	13.2	N/A

Test Report IEC/EN 60529

Degrees of protection provided by enclosures (IP Code)

IEC_60529_1989+A1:1999+A2:2013

Report No.: GRZJ240815802S01

	4	Rigid steel rod 1.0 ₀ ^{+0.05} mm diameter with edges free from burrs	1N±10 %	13.2	N/A
	5	Dust chamber figure 2, with or without underpressure	--	13.4+13.5	N/A
	6	Dust chamber figure 2, with under pressure	--	13.4+13.6	P
13.2	Test conditions for first characteristic numerals 1, 2, 3, 4				N/A
	The object probe is pushed against any openings of the enclosure with the force specified in table 7.				N/A
13.3	Acceptance conditions for first characteristic numerals 1, 2, 3, 4				N/A
	The protection is satisfactory if the full diameter of the probe specified in table 7 does not pass through any opening.				N/A
13.4	Dust test for first characteristic numerals 5 and 6				P
	The test is made using a dust chamber incorporating the basic principles shown in figure 2 whereby the powder circulation pump may be replaced by other means suitable to maintain the talcum powder in suspension in a closed test chamber. The talcum powder used shall be able to pass through a square-meshed sieve the nominal wire diameter of which is 50 µm and the nominal width of a gap between wires 75 µm. The amount of talcum powder to be use dis 2 kg per cubic metre of the test chamber volume. It shall not have been used for more than 20 tests.				P
	Enclosures are of necessity in one of two categories.				P
	Category 1: Enclosures where the normal working cycle of the equipment causes reductions in air pressure within the enclosure below that of the surrounding air, for example, due to thermal cycling effects.				P
	Category 2: Enclosures where no pressure difference relative to the surrounding air is present.		Enclosure is Category 1		N/A
	Category 1 enclosures.				P
	The enclosure under test is supported inside the test chamber and the pressure inside the enclosure is maintained below the surrounding atmospheric pressure by a vacuum pump.				P
	The suction connection shall be made to a hole specially provided for this test.				P
	If not otherwise specified in the relevant product standard, this hole shall be in the vicinity of the vulnerable parts.				P
	If it is impracticable to make a special hole, the suction connection shall be made to the cable inlet hole.				N/A
	If there are other holes (for example, more cable inlet holes or drain-holes) these shall be treated as intended for normal use on site.				N/A

Test Report IEC/EN 60529

Degrees of protection provided by enclosures (IP Code)

IEC_60529_1989+A1:1999+A2:2013

Report No.: GRZJ240815802S01

	The object of the test is to draw into the enclosure, by means of depression, a volume of air 80 times the volume of the sample enclosure tested without exceeding the extraction rate of 60 volumes per hour.		N/A
	In no event shall the depression exceed 2 kPa (20 mbar) on the manometer shown in figure 2.	less than pressure 2 kPa	P
	If an extraction rate of 40 to 60 volumes per hour is obtained the duration of the test is 2 h.	duration of the exposure: 2 hours	P
	If, with a maximum depression of 2 kPa (20 mbar), the extraction rate is less than 40 volumes per hour, the test is continued until 80 volumes have been drawn through, or a period of 8h has elapsed.		N/A
	Category 2 enclosures:		N/A
	The enclosure under test is supported in its normal operating position inside the test chamber. but is not connected to a vacuum pump, Any drain-hole normally open shall be left open for the duration of the test. The test shall be continued for a period of 8h.		N/A
	Category 1 and category 2 enclosures.		N/A
	If it is impracticable to test the complete enclosure in the test chamber, one of the following procedures shall be applied:	complete enclosure	N/A
	testing of individually enclosed sections of the enclosure,		N/A
	testing of representative parts of the enclosure, comprising components such as doors, ventilation openings, joints, shaft seals, etc., in position during test;		N/A
	testing of a smaller enclosure having the same full-scale design details.		N/A
	in the last two cases, the volume of air to be drawn through the enclosure under test shall be the same as for the whole enclosure in full scale.		N/A
13.5	Special conditions for first characteristic numeral 5		N/A
13.5.1	Test conditions for first characteristic numeral 5		N/A
	The enclosure shall be deemed category i unless the relevant product standard for the equipment specifies that the enclosure is category 2.	first characteristic numeral 6	N/A
13.5.2	Acceptance conditions for first characteristic numeral 5		N/A
	The protection is satisfactory if, on inspection, talcum powder has not accumulated in a quantity or location such that, as with any other kind of dust, it could interfere with the correct operation of the equipment or impair safety,		N/A
	Except for special cases to be clearly specified in the relevant product standard, no dust shall deposit where it could lead to tracking along the creepage distances.		N/A
13.6	Special conditions for first characteristic numeral 6		P

Test Report IEC/EN 60529

Degrees of protection provided by enclosures (IP Code)

IEC_60529_1989+A1:1999+A2:2013

Report No.: GRZJ240815802S01

13.6.1	Test conditions for first characteristic numeral 6		P
	The enclosure shall be deemed category 1, whether reductions in pressure below the atmospheric pressure are present or not.	Enclosure is Category 1	P
13.6.2	Acceptance conditions for first characteristic numeral 6		P
	The protection is satisfactory if no deposit of dust is observable inside the enclosure at the end of the test.		P

14	TESTS FOR PROTECTION AGAINST WATER INDICATED BY THE SECOND CHARACTERISTIC NUMERAL					P
14.1	Test means					P
	The test means and the main test conditions are given in table 8.					P
	Table 8 <i>Test means and main test conditions for the tests for protection against water</i>					P
	Second characteristic numeral	Test means	Water flow rate	Duration of test	Test conditions, See	
	0	No test required	--	--	--	N/A
	1	Drip box Figure 3 Enclosure on turntable	1 ^{+0.5} mm/min	10 min	14.2.1	N/A
	2	Drip box Figure 3 Enclosure in 4 fixed positions of 15° tilt	3 ^{+0.5} mm/min	2.5min For each Position of tilt	14.2.2	N/A
	3	Oscillating tube Figure 4 Spray ±60° from vertical, distance max.200 mm or Spray nozzle Figure 5 Spray ±60° from vertical	0,07 l/min ± 5% per hole, multiplied by number of holes 10 l/min ± 5%	10 min 1min/m ² at least 5 min	14.2.3a) 14.2.3b)	N/A
	4	As for numeral 3 Spray ±180° from vertical	As for numeral 3		14.2.4	N/A
	5	Water jet hose nozzle Figure 6 Nozzle 6.3mm diameter, distance 2.5m to 3m	12.5 l/min ± 5%	1min/m ² at least 3 min	14.2.5	N/A
	6	Water jet hose nozzle Figure 6 Nozzle 12,5 mm diameter, distance 2.5m to 3m	100l/min ± 5%	1min/m ² at least 3 min	14.2.6	N/A
	7	Immersion tank Water-level on enclosure: 0.15m above top 1 m above bottom	--	30 min	14.2.7	N/A

Test Report IEC/EN 60529

Degrees of protection provided by enclosures (IP Code)

IEC_60529_1989+A1:1999+A2:2013

Report No.: GRZJ240815802S01

	8	Immersion tank Water-level: by agreement	--	by agreement	14.2.8	P
	9	Fan jet nozzle Figure 7 Test of small enclosure on turntable Figure 12 Turntable speed (5±1) r/min Spray at 0°, 30°, 60°, 90° or Test of large enclosures as per intended use Spray from all practical directions Distance(175±25)mm	(15± 1)l/min	30 s per Position 1min/m ² at least 3 min	14.2.9a) 14.2.9b)	N/A
14.2	Test conditions					P
	Test means and main test conditions are given in table 8.					P
	Details concerning compliance of degrees of protection-in particular for second characteristic numerals 5/6/9 (water jets) and numerals 7/8 (immersion) - are given in Clause 6					N/A
	The tests are conducted with fresh water.					P
	During the tests for IPX1 to IPX6 the water temperature should not differ by more than 5 K from the temperature of the specimen under test. If the water temperature is more than 5 K below the temperature of the specimen a pressure balance shall be provided for the enclosure.					N/A
	For IPX7 and IPX9 details of the water temperature are given in 14.2.7 and 14.2.9respectively.					P
	During the test, the moisture contained inside the enclosure may partly condense. The dew which may thus deposit shall not be mistaken for ingress of water.					N/A
	For the purpose of the tests, the surface area of the enclosure is calculated with a tolerance of 10%					N/A
	Adequate safety precautions should be taken when testing the equipment in the energized condition					N/A
14.2.1	Test for second characteristic numeral 1 with the drip box					N/A
	The test is made with a device which produces a uniform flow of water drops over the whole area of the enclosure.			second characteristic numeral 8		N/A
	An example of such a device is shown in figure 3 a)					N/A
	The turntable on which the enclosure is placed has a rotation speed of 1 r/min and the eccentricity(distance between turntable axis and specimen axis) is approximately 100 mm.					N/A

Test Report IEC/EN 60529

Degrees of protection provided by enclosures (IP Code)

IEC_60529_1989+A1:1999+A2:2013

Report No.: GRZJ240815802S01

	The enclosure under test is placed in its normal operating position under the drip box, the base of which is larger than that of the enclosure. Except for enclosures designed for wall or ceiling mounting, the support for the enclosure under test should be smaller than the base of the enclosure.		N/A
	An enclosure normally fixed to a wall or ceiling is fixed in its normal position of use to a wooden board having dimensions which are equal to those of that surface of the enclosure which is in contact with the wall or ceiling when the enclosure is mounted as in normal use.		N/A
	The duration of test is 10 min		N/A
14.2.2	Test for second characteristic numeral 2 with the drip box		N/A
	The dripping device is the same as specified in 14.2.1 adjusted to provide the water flow rate specified in table 8.	second characteristic numeral 8	N/A
	The table on which the enclosure is placed does not turn as in the case of the test for the second characteristic numeral 1.		N/A
	The enclosure is tested for 2.5 min in each of four fixed positions of tilt.		N/A
	These positions are 15 ° on either side of the vertical in two mutually perpendicular planes (see figure 3b)).		N/A
	The total duration of the test is 10 min.		N/A
14.2.3	Test for second characteristic numeral 3 with oscillating tube or spray nozzle		N/A
	The test is made using one of the two test devices described in figure 4 and in figure 5 in accordance with the relevant product standard.	second characteristic numeral 8	N/A
	a) Conditions when using the test device as in Figure 4 (oscillating tube)		N/A
	b) Conditions when using the test device as in Figure 5 (spray nozzle)		N/A
14.2.4	Test for second characteristic numeral 4 with oscillating tube or spray nozzle		N/A
	The test is made using one of the two test devices described in Figure 4 and in Figure 5 in accordance with the relevant product standard.	second characteristic numeral 8	N/A
	a) Conditions when using the test device as in Figure 4 (oscillating tube):		N/A
	b) Conditions when using the test device as in Figure 5 (spray nozzle):		N/A
	Table 9 <i>Total water rate q_v under IPX3 and IPX4 test conditions Mean flow rate per hole $q_{v1} = 0,07$ l/min</i>		N/A

	Tube radius R	Degree IPX3	Degree IPX4	--
--	------------------	-------------	-------------	----

Test Report IEC/EN 60529

Degrees of protection provided by enclosures (IP Code)

IEC_60529_1989+A1:1999+A2:2013

Report No.: GRZJ240815802S01

	mm	Number of open holes	Total water flow qv	Number of open holes 1)	Total water flow qv	--
		N ¹⁾	l /min	N ¹⁾	l /min	--
	200	8	0.56	12	0.84	N/A
	400	16	1.1	25	1.8	N/A
	600	25	1.8	37	2.6	N/A
	800	33	2.3	50	3.5	N/A
	1000	41	2.9	62	4.3	N/A
	1200	50	3.5	75	5.3	N/A
	1400	58	4.1	87	6.1	N/A
	1600	67	4.7	100	7.0	N/A
<i>¹⁾Depending on the actual arrangement of the hole centres at the specified distance, the number of open holes N may be increased by 1.</i>						
14.2.5	Test for second characteristic numeral 5 with the 6,3 mm nozzle					N/A
	The test is made by spraying the enclosure from all practicable directions with a stream of water from a standard test nozzle as shown in figure 6.			second characteristic numeral 8		N/A
	The conditions to be observed are as follows					N/A
	internal diameter of the nozzle: 6.3 mm;					N/A
	delivery rate: 12.5 l/min ± 5%;					N/A
	water pressure: to be adjusted to achieve the specified delivery rate;					N/A
	core of the substantial stream: circle of approximately 40 mm diameter at 2.5 m distance from nozzle;					N/A
	test duration per square metre of enclosure surface area likely to be sprayed: 1 min;					N/A
	minimum test duration: 3 min;					N/A
	distance from nozzle to enclosure surface: between 2.5 and 3 m;					N/A
14.2.6	Test for second characteristic numeral 6 with the 12,5 mm nozzle					N/A
	The test is made by spraying the enclosure from all practicable directions with a stream of water from a standard test nozzle as shown in figure 6.			second characteristic numeral 8		N/A
	The conditions to be observed are as follows:					N/A
	internal diameter of the nozzle: 12.5 mm;					N/A
	delivery rate: 100 l/min ± 5 %;					N/A
	water pressure: to be adjusted to achieve the specified delivery rate;					N/A

Test Report IEC/EN 60529

Degrees of protection provided by enclosures (IP Code)

IEC_60529_1989+A1:1999+A2:2013

Report No.: GRZJ240815802S01

	core of the substantial stream: circle of approximately 120 mm diameter at 2,5 m distance from nozzle;		N/A
	test duration per square metre of enclosure surface area likely to be sprayed: 1 min;		N/A
	minimum test duration: 3 min;		N/A
	distance from nozzle to enclosure surface: between 2.5 m and 3 m		N/A
14.2.7	Test for second characteristic numeral 7: temporary immersion between 0,15mandim		N/A
	The test is made by completely immersing the enclosure in water in its service position as specified by the manufacturer so that the following conditions are satisfied:	second characteristic numeral 8	N/A
	a)the lowest point of enclosures with a height less than 850 mm is located 1 000 mm below the surface of the water;		N/A
	b) the highest point of enclosures with a height equal to or greater than 850 mm is located 150 mm below the surface of the water;		N/A
	c)the duration of the test is 30 min;		N/A
	d)the water temperature does not differ from that of the equipment by more than 5 K.However, a modified requirement may be specified in the relevant product standard if the tests are to be made when the equipment is energized and/or its parts in motion.		N/A
14.2.8	Test for second characteristic numeral 8: continuous immersion subject to agreement		P
	Unless there is a relevant product standard, the test conditions are subject to agreement between manufacturer and user,		P
	but they shall be more severe than those prescribed in 14.2.7	Test Method refer to cl. 14.2.7, except cl. 14.2.7 c). Cl. 14.2.7 c). is changer to:"the duration of the test is 60 min;"	P
	And they shall take account of the condition that the enclosure will be continuously immersed in actual use.		P
14.2.9	Test for second characteristic numeral 9 by high pressure and temperature water jetting		N/A
	The test is made by spraying the enclosure with a stream of water from a standard test nozzle as shown in Figures 7, 8 and 9.	second characteristic numeral 8	N/A
	The set-up for measuring the impact force of the water jet is given in Figure 10.		N/A

Test Report IEC/EN 60529

Degrees of protection provided by enclosures (IP Code)

IEC_60529_1989+A1:1999+A2:2013

Report No.: GRZJ240815802S01

	The distribution force shall be verified at upper and lower limits of distance tolerance range (see Figure 11).		N/A
	a) For small enclosures (largest dimension less than 250 mm), the enclosure shall be mounted on the test device shown in Figure 12. --turntable speed: 5 r/min \pm 1 r/min --spray positions: 0°, 30°, 60°, 90° The test duration is 30 s per position.		N/A
	b) For large enclosures (largest dimension greater than or equal to 250 mm), the enclosure shall be mounted as per intended use. The entire exposed surface area of the enclosure shall be subjected to the spray at some point during the test procedure. --spray positions: the enclosure shall be sprayed from all practical directions covering the entire surface area and the spray shall be, as far as possible, perpendicular to the sprayed surface. --distance between nozzle and sample under test shall be 175 \pm 25 mm.		N/A
	The test duration is 1 min/m ² of the calculated surface area of the enclosure (excluding any mounting surface), with a minimum duration of 3 min.		N/A
14.3	Acceptance conditions		P
	After testing in accordance with the appropriate requirements of 14.2.1 to 14.2.9, the enclosure shall be inspected for ingress of water.	No water has entered the enclosure	P
	It is the responsibility of the relevant Technical Committee to specify the amount of water which may be allowed to enter the enclosure and the details of a dielectric strength test, if any.	Dielectric strength test was omitted	N/A
	In general, if any water has entered, it shall not:		P
	be sufficient to interfere with the correct operation of the equipment or impair safety;	No water has entered the enclosure	P
	deposit on insulation parts where it could lead to tracking along the creepage distances;	No water has entered the enclosure	P
	reach live parts or windings not designed to operate when wet;	No water has entered the enclosure	P
	accumulate near the cable end or enter the cable if any	No water has entered the enclosure	P
	if the enclosure is provided with drain-holes, it should be proved by inspection that any water which enters does not accumulate and that it drains away without doing any harm to the equipment.	no drain-holes	N/A

Test Report IEC/EN 60529

Degrees of protection provided by enclosures (IP Code)

IEC_60529_1989+A1:1999+A2:2013

Report No.: GRZJ240815802S01

	For enclosures without drain-holes, the relevant product standard shall specify the acceptance conditions if water can accumulate to reach live parts.	No water has entered the enclosure	P
--	--	------------------------------------	----------

15	TESTS FOR PROTECTION AGAINST ACCESS TO HAZARDOUS PARTS INDICATED BY THE ADDITIONAL LETTER		N/A
15.1	Access probes		N/A
	Access probes to verify the protection of persons against access to hazardous parts are given in table 6.		N/A
15.2	Test conditions		N/A
	The access probe is pushed against any openings of the enclosure with the force specified in table 6. If it partly or fully penetrates, it is placed in every possible position, but in no case shall the stop face fully penetrate through the opening.		N/A
	Internal barriers are considered part of the enclosure as defined in 3.1.		N/A
	For tests on low-voltage equipment, a low-voltage supply (of not less than 40 V and not more than 50 V) in series with a suitable lamp should be connected between the probe and the hazardous parts inside the enclosure. Hazardous live parts covered only with varnish or paint or protected by oxidation or by a similar process, are covered by a metal foil electrically connected to those parts which are normally live in operation.		N/A
	The signal-circuit method should also be applied to the hazardous moving parts of high-voltage equipment.		N/A
	Internal moving parts may be operated slowly, where this is possible.		N/A
15.3	Acceptance conditions		N/A
	The protection is satisfactory if adequate clearance is kept between the access probe and hazardous parts.		N/A
	In the case of the test for the additional letter B, the jointed test finger may penetrate to its 80mm length, but the stop face (Ø 50 x20 mm) shall not pass through the opening.		N/A
	Starting from the straight position, both joints of the test finger shall be successively bent through an angle of up to 90° with respect to the axis of the adjoining section of the finger and shall be placed in every possible position.		N/A

**Test Report
IEC/EN 60529**

Degrees of protection provided by enclosures (IP Code)

IEC_60529_1989+A1:1999+A2:2013

Report No.: GRZJ240815802S01

	In case of the tests for the additional letters C and D, the access probe may penetrate to its full length, but the stop face shall not fully penetrate through the opening.		N/A
	See Annex A for further clarification.		N/A
	Conditions for verification of adequate clearance are identical with those given in 12.3.1, 12.3.2 and 12.3.3.		N/A
ZA	ANNEX ZA(NORMATIVE)Other International Publications quoted in this standard with the references of the relevant Euro		—
	When the International Publication as been modified by CENELEC common modifications.indicated by (mod), the relevant EN/HD applies	(EN 60529)	N/A

**Test Report
IEC/EN 60529**

Degrees of protection provided by enclosures (IP Code)

IEC_60529_1989+A1:1999+A2:2013

Report No.: GRZJ240815802S01

Photos of the test process:



Photo 1: Dust Test set-up



Photo 2: after the Dust Test

**Test Report
IEC/EN 60529**

Degrees of protection provided by enclosures (IP Code)

IEC_60529_1989+A1:1999+A2:2013

Report No.: GRZJ240815802S01

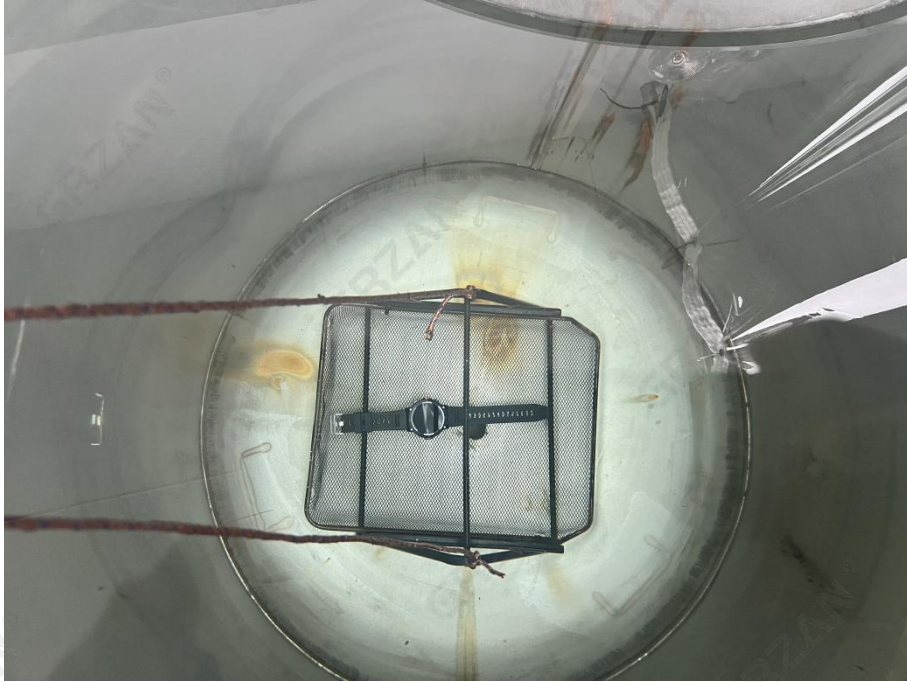


Photo 3: IPX8 Test



Photo 4: Visual inspection after the IP6X Test

**Test Report
IEC/EN 60529**

Degrees of protection provided by enclosures (IP Code)

IEC_60529_1989+A1:1999+A2:2013

Report No.: GRZJ240815802S01



Photo 5: Visual inspection after the IP6X Test

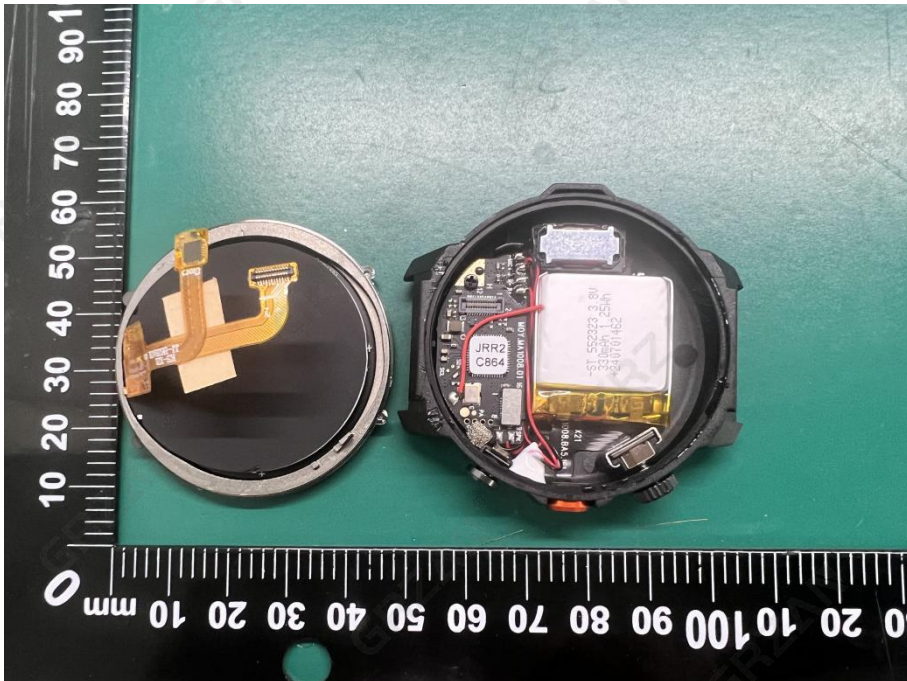


Photo 6: Visual inspection after the IPX8 Test

**Test Report
IEC/EN 60529**

Degrees of protection provided by enclosures (IP Code)

IEC_60529_1989+A1:1999+A2:2013

Report No.: GRZJ240815802S01



Photo 7: Visual inspection after the IPX8 Test

**Test Report
IEC/EN 60529**

Degrees of protection provided by enclosures (IP Code)

IEC_60529_1989+A1:1999+A2:2013

Report No.: GRZJ240815802S01

Test Photo Documentation

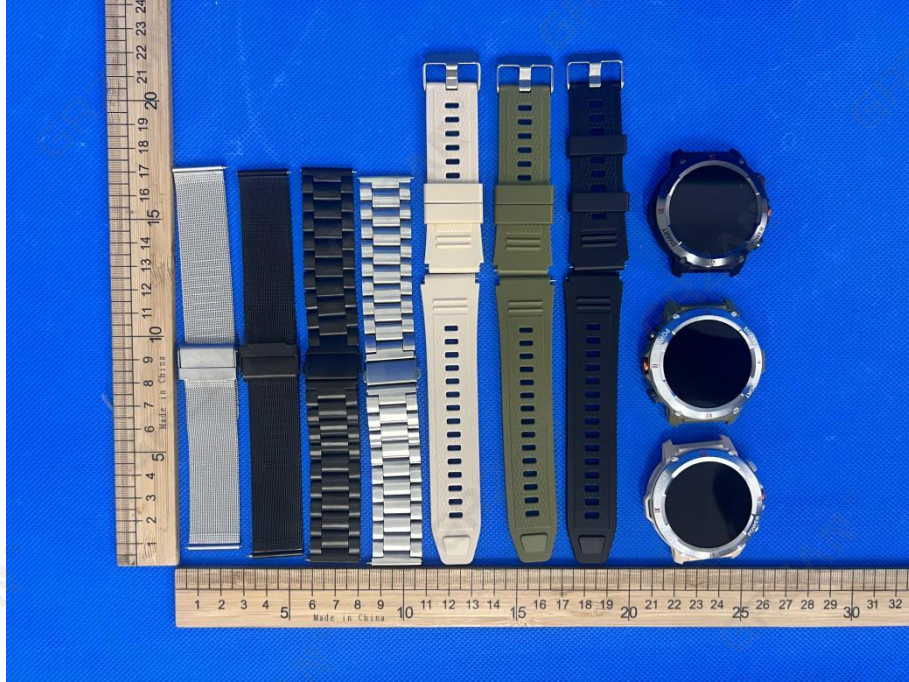


Photo 1: model: X22



Photo 2: model: X22

END OF THIS TEST PLAN