



Report No.: MTL24041000303R01

RoHS TEST REPORT

Prepared for :

Shenzhen WeizhongXin Technology Co., Ltd
A415, Building 2, Huaqiang North SEG Science and Technology Park, Futian
District, Shenzhen

Product: Bluetooth watches
Brand Name: N/A
Model Name: GT55, GT55pro, GT56, GT56pro, GT95,
GT96, GT95pro, GT96pro, GT58, GT59
Date of Test: Apr. 10, 2024 to Apr.19, 2024
Date of Report: Apr.22, 2024
Report Number: MTL24041000303R01

Prepared By :

Shenzhen MTL Testing Technology Co., Ltd.



TEST RESULT CERTIFICATION

Applicant : Shenzhen WeizhongXin Technology Co., Ltd
Address : A415, Building 2, Huaqiang North SEG Science and Technology Park,
Futian District, Shenzhen
Manufacturer : Shenzhen WeizhongXin Technology Co., Ltd
Address : A415, Building 2, Huaqiang North SEG Science and Technology Park,
Futian District, Shenzhen

Product name : Bluetooth watches
Product model : GT55,GT55pro,GT56,GT56pro,GT95,GT96,GT95pro,GT96pro,GT58,GT59
Brand Name : N/A

Date of Sample Received : Apr. 10, 2024
Testing Period : Apr.10, 2024 to Apr.19, 2024

Test Requested:

Based on the performed test on submitted sample(s), the results of Lead, Mercury, Cadmium, Hexavalent chromium, Polybrominated biphenyls (PBBs), Polybrominated diphenyl ethers (PBDEs) and Phthalates such as bis-(2-ethylhexyl)-Phthalate (DEHP), Benzyl butyl phthalate (BBP), Dibutyl Phthalate (DBP), Diisobutyl Phthalate (DIBP) comply with the limits as set by RoHS Directive 2015/863/EU amending Annex II to Directive 2011/65/EU.

Conclusion

PASS

Prepared by:


Project Engineer

Reviewed by:


Project Manager

Approved by:


Technical Director



**** Modified History ****

Revision	Description	Issued Data	Remark
Revision 1.0	Initial Test Report Release		

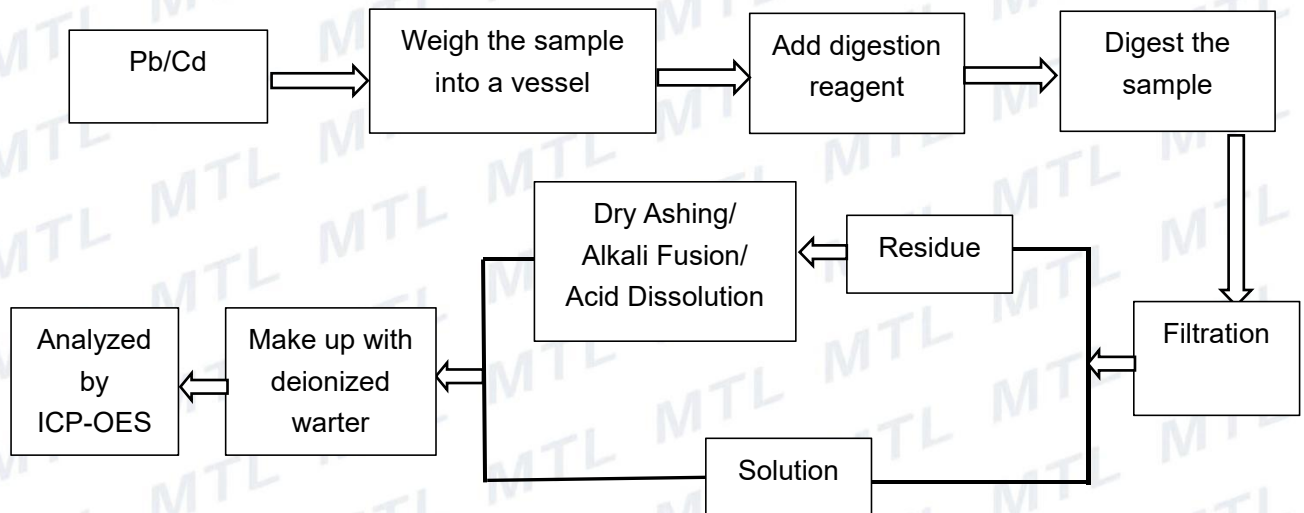


1. Test Method(s):

Testing item	Testing Method	Equipment
Screening analysis by XRF		
Lead(Pb) Cadmium(Cd) Mercury(Hg) Chromium(Cr) Bromine(Br)	IEC 62321-3-1-2013	ED-XRF
Chemical testing		
Lead(Pb)	IEC 62321-5-2013	ICP-OES
Cadmium(Cd)	IEC 62321-5-2013	ICP-OES
Mercury(Hg)	IEC 62321-4:2013+A1:2017	ICP-OES
Chromium(Cr VI) for plastic	IEC 62321-7-2:2017	UV-Vis
Chromium(Cr VI) for coating on metals	IEC 62321-7-1:2015	UV-Vis
PBBs/ PBDEs	IEC 62321-6:2015	GC-MS
DEHP/DBP/BBP/ DIBP	IEC 62321-8:2017	GC-MS

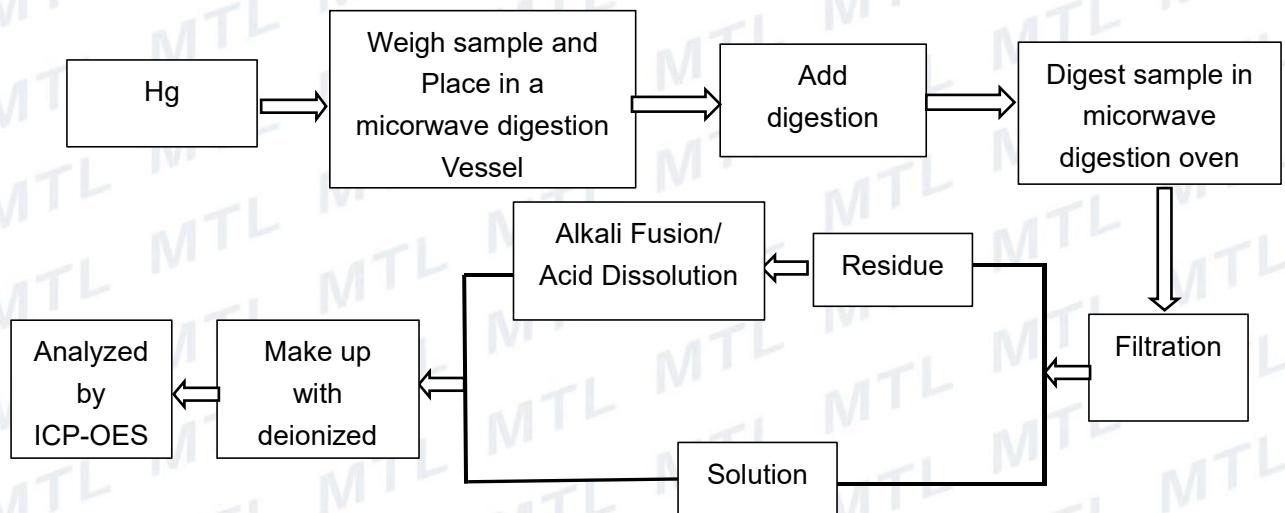
2. Test Flow:

1. Lead(Pb), Cadmium(Cd)

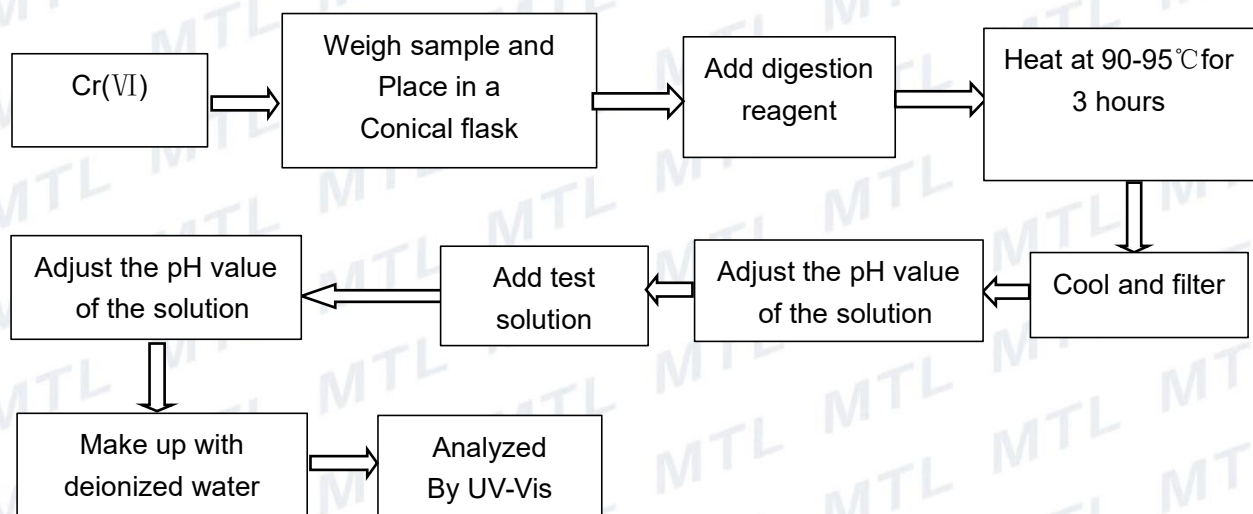




2. Mercury (Hg)

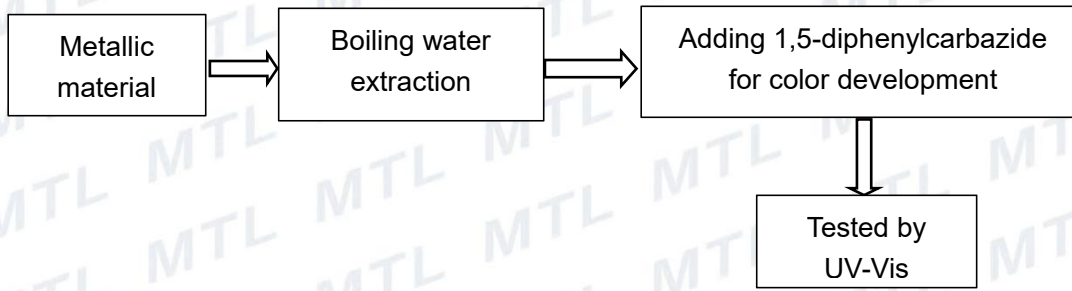


3. Hexavalent Chromium(Cr VI) (Alkaline extraction)

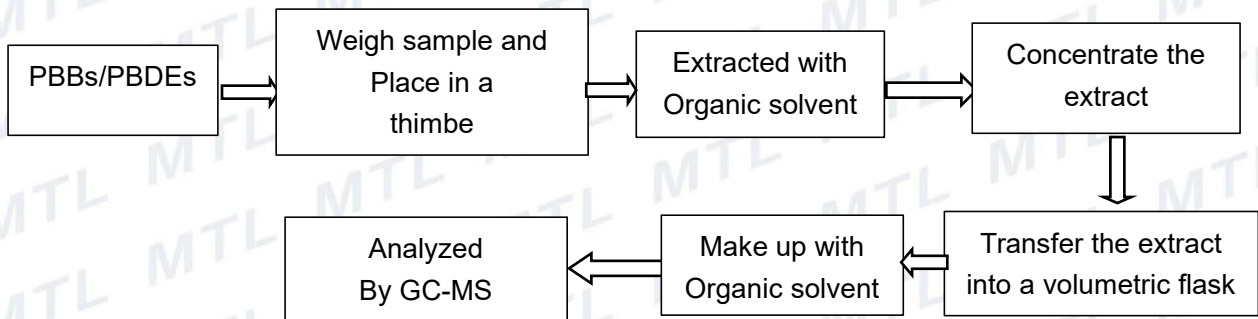




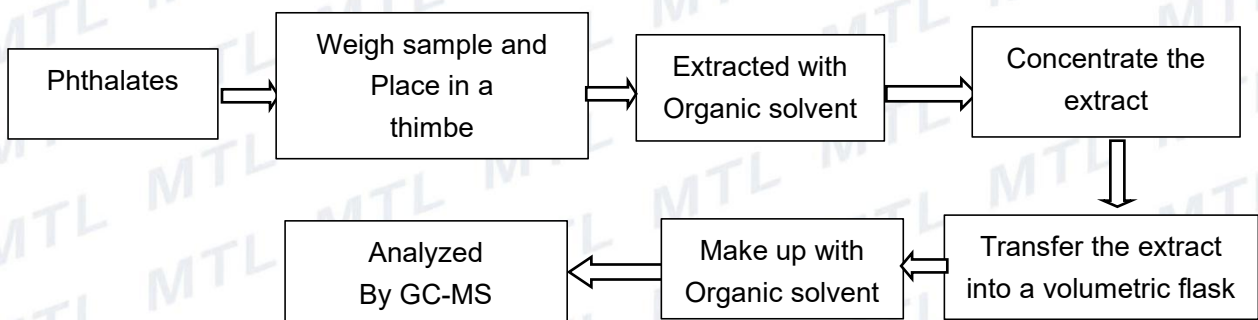
4. Hexavalent Chromium(Cr VI) (Boiling water extraction)



5. PBBs/ PBDEs



6. DEHP/ BBP/ DBP/ DIBP





3. Test Results:

Part No.	Sample Description	Test item	XRF Result	Chemical Test (mg/kg)	Conclusion
1	Silver metal	Pb	BL	--	Pass
		Cd	BL	--	
		Hg	BL	--	
		Cr(Cr(VI))	BL	--	
		PBBs	--	--	
		PBDEs	--	--	
		DEHP	--	--	
		DBP	--	--	
		BBP	--	--	
DIBP	--	--			
2	Silver metal	Pb	BL	--	Pass
		Cd	BL	--	
		Hg	BL	--	
		Cr(Cr(VI))	BL	--	
		PBBs	--	--	
		PBDEs	--	--	
		DEHP	--	--	
		DBP	--	--	
		BBP	--	--	
DIBP	--	--			
3	Silver metal	Pb	BL	--	Pass
		Cd	BL	--	
		Hg	BL	--	
		Cr(Cr(VI))	BL	--	
		PBBs	--	--	
		PBDEs	--	--	
		DEHP	--	--	
		DBP	--	--	
		BBP	--	--	
DIBP	--	--			



Part No.	Sample Description	Test item	XRF Result	Chemical Test (mg/kg)	Conclusion
4	Black plastic	Pb	BL	--	Pass
		Cd	BL	--	
		Hg	BL	--	
		Cr(Cr(VI))	BL	--	
		PBBs	BL	--	
		PBDEs		--	
		DEHP	--	N.D.	
		DBP	--	N.D.	
		BBP	--	N.D.	
		DIBP	--	N.D.	
5	Black silicone	Pb	BL	--	Pass
		Cd	BL	--	
		Hg	BL	--	
		Cr(Cr(VI))	BL	--	
		PBBs	BL	--	
		PBDEs		--	
		DEHP	--	N.D.	
		DBP	--	N.D.	
		BBP	--	N.D.	
		DIBP	--	N.D.	
6	Transparent plastic	Pb	BL	--	Pass
		Cd	BL	--	
		Hg	BL	--	
		Cr(Cr(VI))	BL	--	
		PBBs	BL	--	
		PBDEs		--	
		DEHP	--	N.D.	
		DBP	--	N.D.	
		BBP	--	N.D.	
		DIBP	--	N.D.	



Part No.	Sample Description	Test item	XRF Result	Chemical Test (mg/kg)	Conclusion
7	Black plastic	Pb	BL	--	Pass
		Cd	BL	--	
		Hg	BL	--	
		Cr(Cr(VI))	BL	--	
		PBBs	BL	--	
		PBDEs		--	
		DEHP	--	N.D.	
		DBP	--	N.D.	
		BBP	--	N.D.	
DIBP	--	N.D.			
8	White plastic	Pb	BL	--	Pass
		Cd	BL	--	
		Hg	BL	--	
		Cr(Cr(VI))	BL	--	
		PBBs	BL	--	
		PBDEs		--	
		DEHP	--	N.D.	
		DBP	--	N.D.	
		BBP	--	N.D.	
DIBP	--	N.D.			
9	Silver plastic	Pb	BL	--	Pass
		Cd	BL	--	
		Hg	BL	--	
		Cr(Cr(VI))	BL	--	
		PBBs	BL	--	
		PBDEs		--	
		DEHP	--	N.D.	
		DBP	--	N.D.	
		BBP	--	N.D.	
DIBP	--	N.D.			



Part No.	Sample Description	Test item	XRF Result	Chemical Test (mg/kg)	Conclusion
10	Transparent plastic	Pb	BL	--	Pass
		Cd	BL	--	
		Hg	BL	--	
		Cr(Cr(VI))	BL	--	
		PBBs	BL	--	
		PBDEs		--	
		DEHP	--	N.D.	
		DBP	--	N.D.	
		BBP	--	N.D.	
DIBP	--	N.D.			
11	Black glass	Pb	BL	--	Pass
		Cd	BL	--	
		Hg	BL	--	
		Cr(Cr(VI))	BL	--	
		PBBs	BL	--	
		PBDEs		--	
		DEHP	--	N.D.	
		DBP	--	N.D.	
		BBP	--	N.D.	
DIBP	--	N.D.			
12	Golden metal	Pb	BL	--	Pass
		Cd	BL	--	
		Hg	BL	--	
		Cr(Cr(VI))	BL	--	
		PBBs	--	--	
		PBDEs		--	
		DEHP	--	--	
		DBP	--	--	
		BBP	--	--	
DIBP	--	--			



Part No.	Sample Description	Test item	XRF Result	Chemical Test (mg/kg)	Conclusion
13	Black plastic	Pb	BL	--	Pass
		Cd	BL	--	
		Hg	BL	--	
		Cr(Cr(VI))	BL	--	
		PBBs	BL	--	
		PBDEs		--	
		DEHP	--	N.D.	
		DBP	--	N.D.	
		BBP	--	N.D.	
		DIBP	--	N.D.	
14	Black plastic	Pb	BL	--	Pass
		Cd	BL	--	
		Hg	BL	--	
		Cr(Cr(VI))	BL	--	
		PBBs	BL	--	
		PBDEs		--	
		DEHP	--	N.D.	
		DBP	--	N.D.	
		BBP	--	N.D.	
		DIBP	--	N.D.	
15	Silver metal	Pb	BL	--	Pass
		Cd	BL	--	
		Hg	BL	--	
		Cr(Cr(VI))	BL	--	
		PBBs	--	--	
		PBDEs		--	
		DEHP	--	--	
		DBP	--	--	
		BBP	--	--	
DIBP	--	--			



Part No.	Sample Description	Test item	XRF Result	Chemical Test (mg/kg)	Conclusion
16	Silver metal	Pb	BL	--	Pass
		Cd	BL	--	
		Hg	BL	--	
		Cr(Cr(VI))	BL	--	
		PBBs	--	--	
		PBDEs		--	
		DEHP	--	--	
		DBP	--	--	
		BBP	--	--	
DIBP	--	--			
17	Silver metal	Pb	BL	--	Pass
		Cd	BL	--	
		Hg	BL	--	
		Cr(Cr(VI))	BL	--	
		PBBs	--	--	
		PBDEs		--	
		DEHP	--	--	
		DBP	--	--	
		BBP	--	--	
DIBP	--	--			
18	Silver metal	Pb	BL	--	Pass
		Cd	BL	--	
		Hg	BL	--	
		Cr(Cr(VI))	BL	--	
		PBBs	--	--	
		PBDEs		--	
		DEHP	--	--	
		DBP	--	--	
		BBP	--	--	
DIBP	--	--			



Part No.	Sample Description	Test item	XRF Result	Chemical Test (mg/kg)	Conclusion
19	Silver metal	Pb	BL	--	Pass
		Cd	BL	--	
		Hg	BL	--	
		Cr(Cr(VI))	BL	--	
		PBBs	--	--	
		PBDEs		--	
		DEHP	--	--	
		DBP	--	--	
		BBP	--	--	
DIBP	--	--			
20	Silver metal	Pb	BL	--	Pass
		Cd	BL	--	
		Hg	BL	--	
		Cr(Cr(VI))	BL	--	
		PBBs	--	--	
		PBDEs		--	
		DEHP	--	--	
		DBP	--	--	
		BBP	--	--	
DIBP	--	--			
21	Silver metal	Pb	BL	--	Pass
		Cd	BL	--	
		Hg	BL	--	
		Cr(Cr(VI))	BL	--	
		PBBs	--	--	
		PBDEs		--	
		DEHP	--	--	
		DBP	--	--	
		BBP	--	--	
DIBP	--	--			



Part No.	Sample Description	Test item	XRF Result	Chemical Test (mg/kg)	Conclusion
22	Black IC	Pb	BL	--	Pass
		Cd	BL	--	
		Hg	BL	--	
		Cr(Cr(VI))	BL	--	
		PBBs	BL	--	
		PBDEs		--	
		DEHP	--	N.D.	
		DBP	--	N.D.	
		BBP	--	N.D.	
DIBP	--	N.D.			
23	Black IC	Pb	BL	--	Pass
		Cd	BL	--	
		Hg	BL	--	
		Cr(Cr(VI))	BL	--	
		PBBs	BL	--	
		PBDEs		--	
		DEHP	--	N.D.	
		DBP	--	N.D.	
		BBP	--	N.D.	
DIBP	--	N.D.			
24	Black PCB	Pb	BL	--	Pass
		Cd	BL	--	
		Hg	BL	--	
		Cr(Cr(VI))	BL	--	
		PBBs	BL	--	
		PBDEs		--	
		DEHP	--	N.D.	
		DBP	--	N.D.	
		BBP	--	N.D.	
DIBP	--	N.D.			



Part No.	Sample Description	Test item	XRF Result	Chemical Test (mg/kg)	Conclusion
25	Black plastic	Pb	BL	--	Pass
		Cd	BL	--	
		Hg	BL	--	
		Cr(Cr(VI))	BL	--	
		PBBs	BL	--	
		PBDEs		--	
		DEHP	--	N.D.	
		DBP	--	N.D.	
		BBP	--	N.D.	
DIBP	--	N.D.			
26	Black plastic	Pb	BL	--	Pass
		Cd	BL	--	
		Hg	BL	--	
		Cr(Cr(VI))	BL	--	
		PBBs	BL	--	
		PBDEs		--	
		DEHP	--	N.D.	
		DBP	--	N.D.	
		BBP	--	N.D.	
DIBP	--	N.D.			
27	Silver metal	Pb	BL	--	Pass
		Cd	BL	--	
		Hg	BL	--	
		Cr(Cr(VI))	BL	--	
		PBBs	--	--	
		PBDEs		--	
		DEHP	--	--	
		DBP	--	--	
		BBP	--	--	
DIBP	--	--			



Part No.	Sample Description	Test item	XRF Result	Chemical Test (mg/kg)	Conclusion
28	Black plastic	Pb	BL	--	Pass
		Cd	BL	--	
		Hg	BL	--	
		Cr(Cr(VI))	BL	--	
		PBBs	BL	--	
		PBDEs		--	
		DEHP	--	N.D.	
		DBP	--	N.D.	
		BBP	--	N.D.	
DIBP	--	N.D.			
29	Black plastic	Pb	BL	--	Pass
		Cd	BL	--	
		Hg	BL	--	
		Cr(Cr(VI))	BL	--	
		PBBs	BL	--	
		PBDEs		--	
		DEHP	--	N.D.	
		DBP	--	N.D.	
		BBP	--	N.D.	
DIBP	--	N.D.			
30	Red plastic	Pb	BL	--	Pass
		Cd	BL	--	
		Hg	BL	--	
		Cr(Cr(VI))	BL	--	
		PBBs	BL	--	
		PBDEs		--	
		DEHP	--	N.D.	
		DBP	--	N.D.	
		BBP	--	N.D.	
DIBP	--	N.D.			



Remark:

1) (a) It is the result on total Br while test item on restricted substances is PBBs/PBDEs. It is the result on total Cr while test item on restricted substances is Cr⁶⁺.

(b) Results are obtained by XRF for primary screening, and further chemical testing by ICP-OES (for Cd, Pb, Hg), UV-Vis (for Cr(VI)) and GC-MS (for PBBs, PBDEs) is recommended to be performed, if the concentration exceeds the below warning value according to IEC 62321-3-1:2013 (unit: mg/kg).

Element	Polymers	Metals	Composite Material
Cd	BL ≤ (70-3σ) < X < (130+3σ) ≤ OL	BL ≤ (70-3σ) < X < (130+3σ) ≤ OL	LOD < X < (150+3σ) ≤ OL
Pb	BL ≤ (700-3σ) < X < (1300+3σ) ≤ OL	BL ≤ (700-3σ) < X < (1300+3σ) ≤ OL	BL ≤ (500-3σ) < X < (1500+3σ) ≤ OL
Hg	BL ≤ (700-3σ) < X < (1300+3σ) ≤ OL	BL ≤ (700-3σ) < X < (1300+3σ) ≤ OL	BL ≤ (500-3σ) < X < (1500+3σ) ≤ OL
Cr	BL ≤ (700-3σ) < X	BL ≤ (700-3σ) < X	BL ≤ (500-3σ) < X
Br	BL ≤ (300-3σ) < X	NA	BL ≤ (250-3σ) < X

(c) OL=Over Limit, BL=Below Limit, X=inconclusive, LOD=Limit of Detection, NA=not applicable, -- = No Testing

(d) The XRF screening test for RoHS elements-The reading may be different to the actual content in the sample be of non-uniformity composition

2) (a) mg/kg=ppm=0.0001%, N.D.=not detected (<MDL)

(b) Unit and Method Detection Limit(MDL) in wet chemical test

Test Items	Unit	MDL	Limit
Pb	mg/kg	2	1000
Cd	mg/kg	2	100
Hg	mg/kg	2	1000
DBP	mg/kg	30	1000
BBP	mg/kg	30	1000
DEHP	mg/kg	30	1000
DIBP	mg/kg	30	1000

The MDL for single compound of PBBs & PBDEs is 20mg/kg, MDL of Cr⁶⁺ for metal sample is 0.10µg/cm². and MDL of Cr⁶⁺ for polymer & composite sample is 8 mg/kg.

(c) Metal sample:

-The sample is positive for Cr⁶⁺ if the Cr⁶⁺ concentration is greater than 0.13 µg/cm².

The sample coating is considered to contain Cr⁶⁺.

-The sample is negative for Cr⁶⁺ if Cr⁶⁺ is ND (concentration less than 0.10 µg/cm²).

The coating is considered a non- Cr⁶⁺ based coating

-The result between 0.10 µg/cm² and 0.13 µg/cm² is considered to be inconclusive, unavoidable coating variations may influence the determination

Information on storage conditions and production date of the tested sample is unavailable and thus Cr⁶⁺ results represent status of the sample at the time of testing.

3) As specified by client to test the specified materials only.

(4) *=According to the declaration from the client, Lead (Pb) in the sample are exempted by EU



RoHS Directive 2011/65/EU based on ANNEX III 6(c): Copper alloy containing no more than 4% lead by weight

- (5) #=According to the declaration from the client, Lead (Pb) in the sample are exempted by EU RoHS Directive 2011/65/EU based on ANNEX III 7(c)-I, Electrical and electronic components containing lead in a glass or ceramic other than dielectric ceramic in capacitors

Photograph of Sample



FIGURE 1



FIGURE 2



FIGURE 3



FIGURE 4



FIGURE 5



FIGURE 6

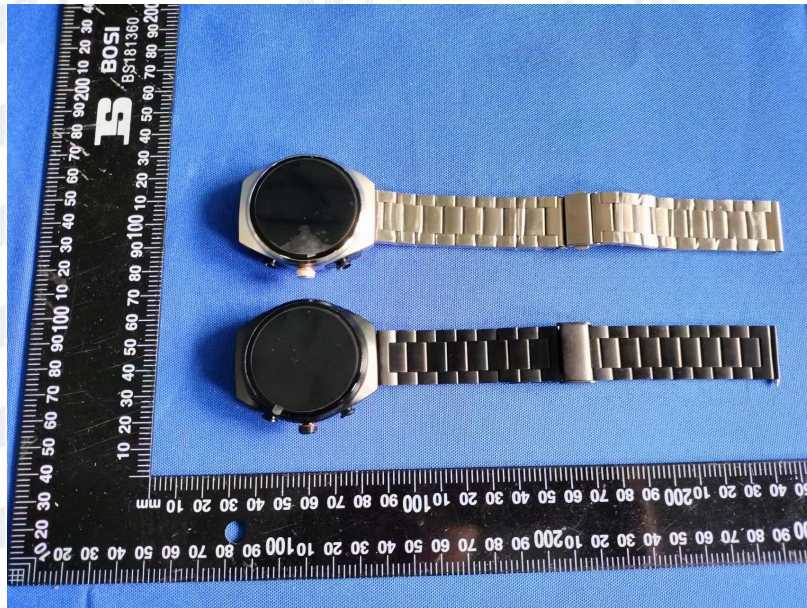


FIGURE 7



FIGURE 8



FIGURE 9



FIGURE 10

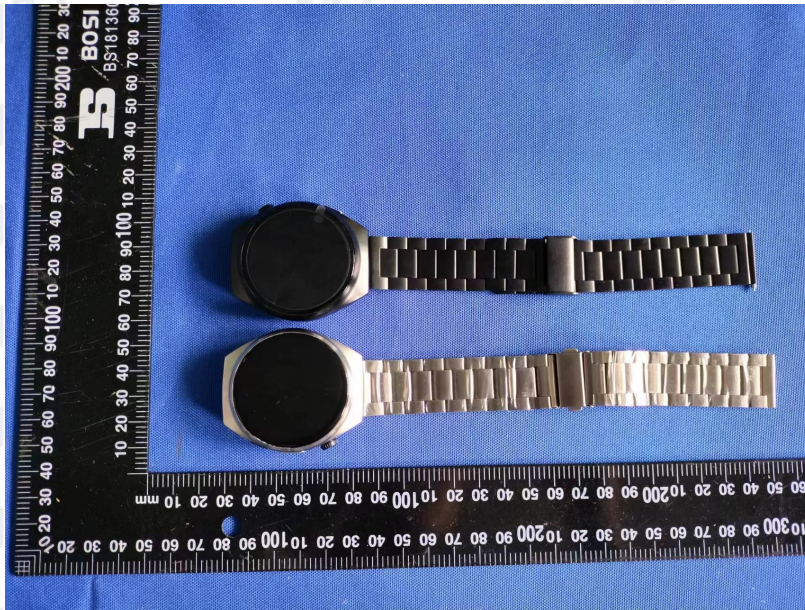


FIGURE 11

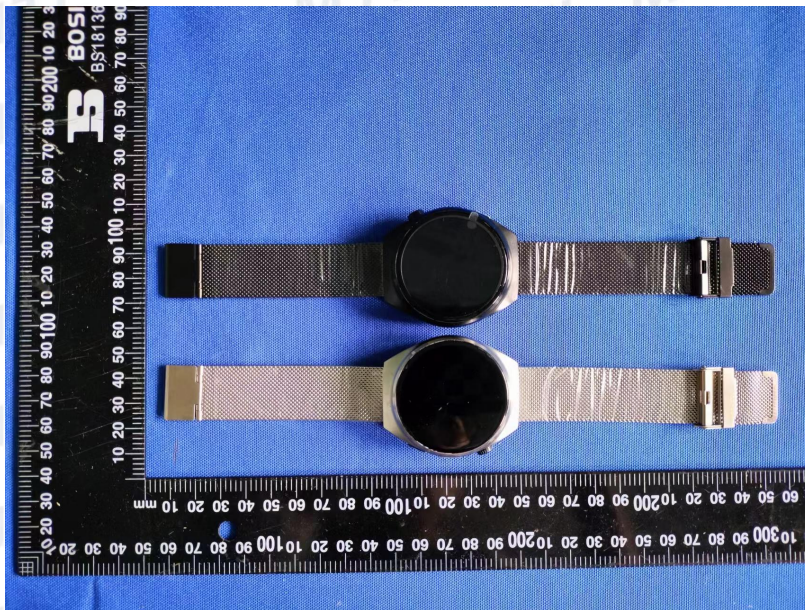


FIGURE 12



FIGURE 13

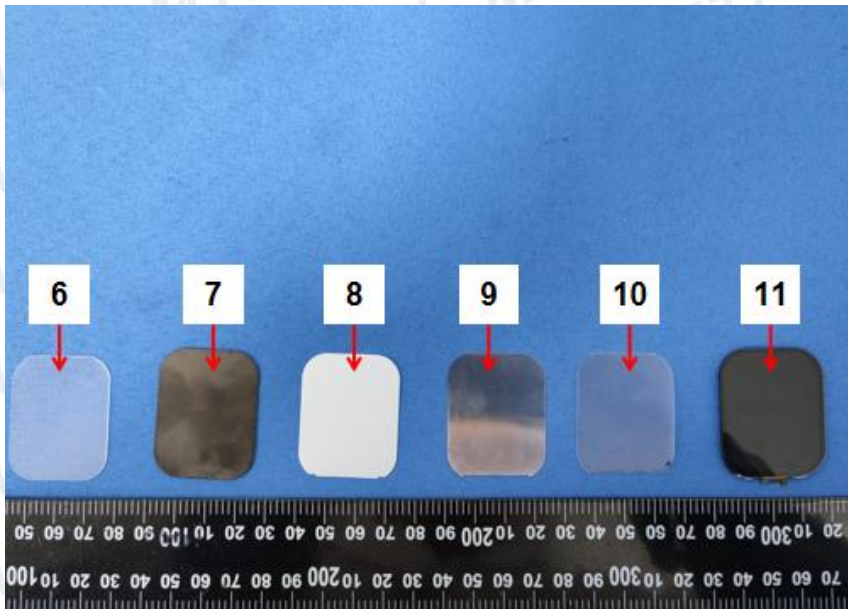


FIGURE 14

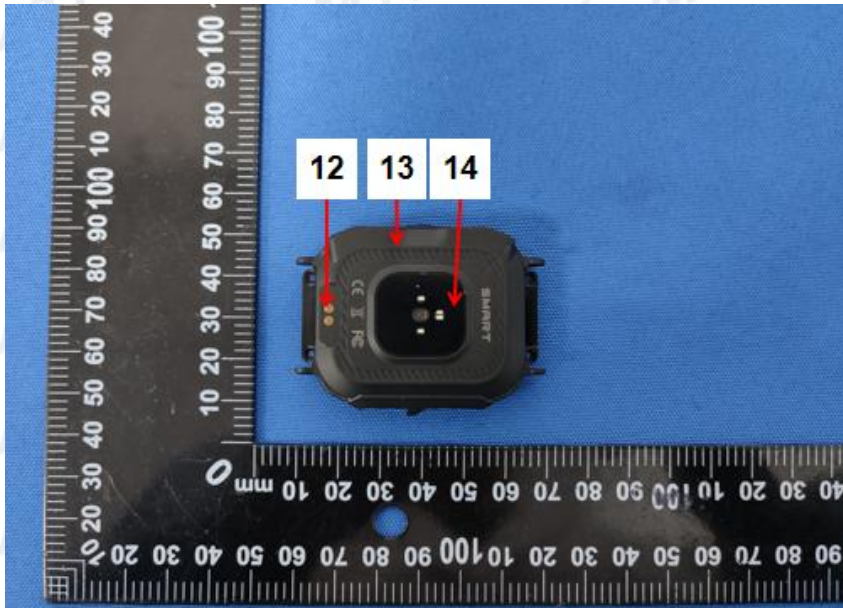


FIGURE 15

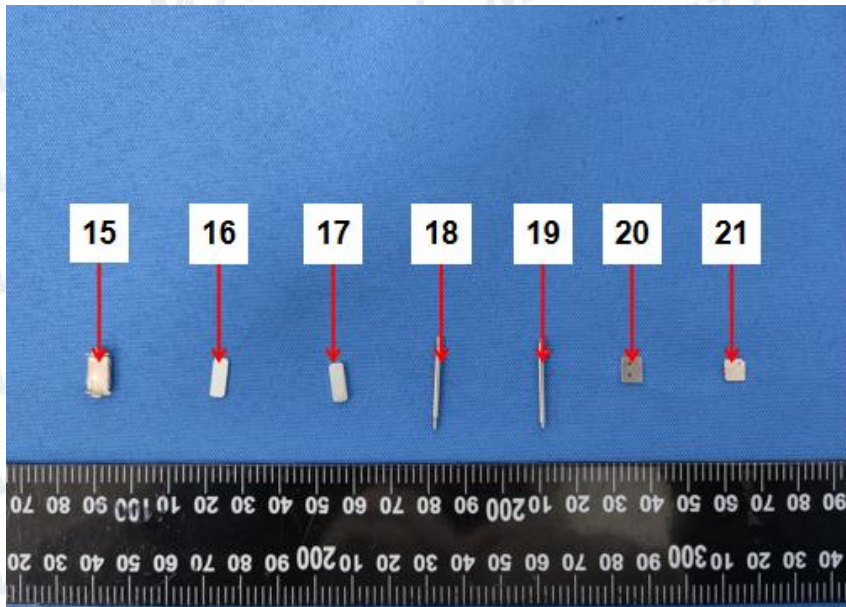


FIGURE 16

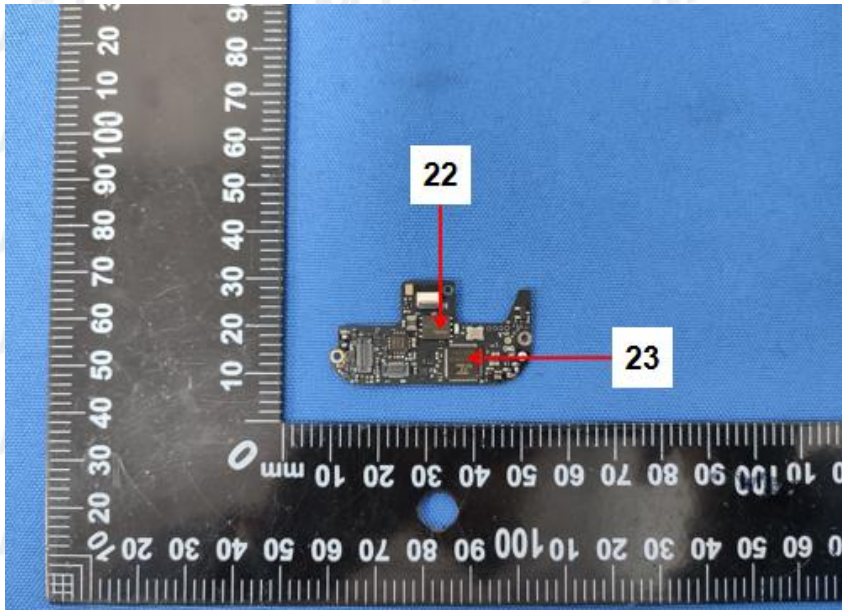


FIGURE 17

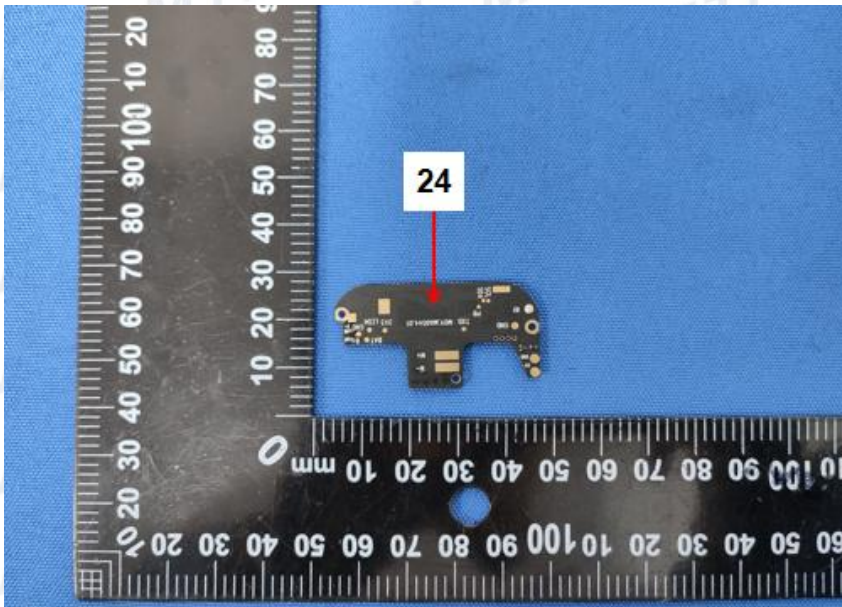


FIGURE 18

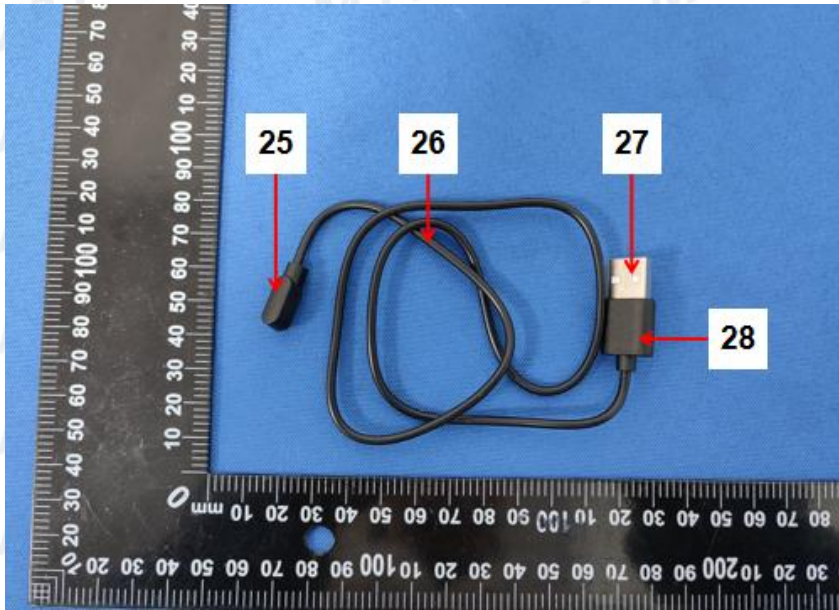


FIGURE 19

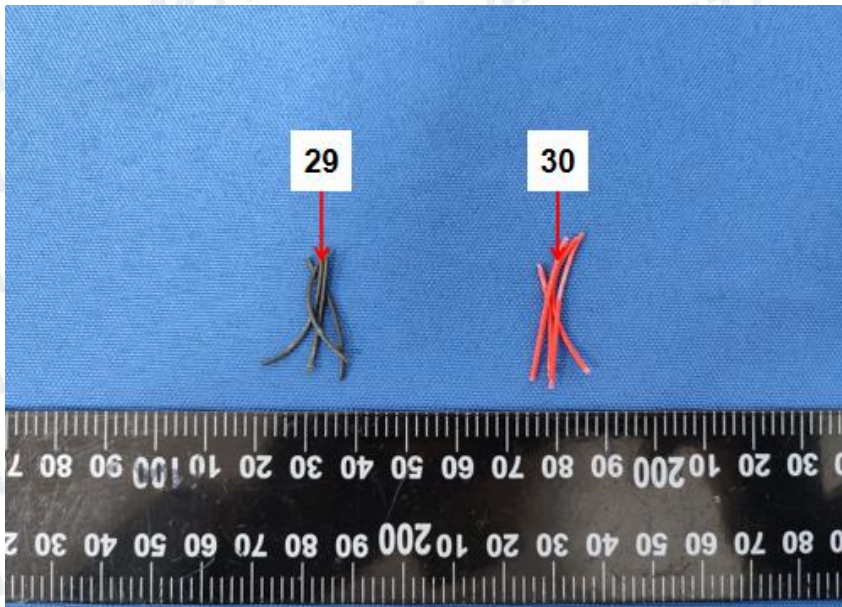


FIGURE 20

End of Report